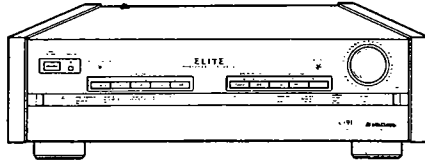


6/86

 **PIONEER**[®]
The future of sound and vision.

Service Manual



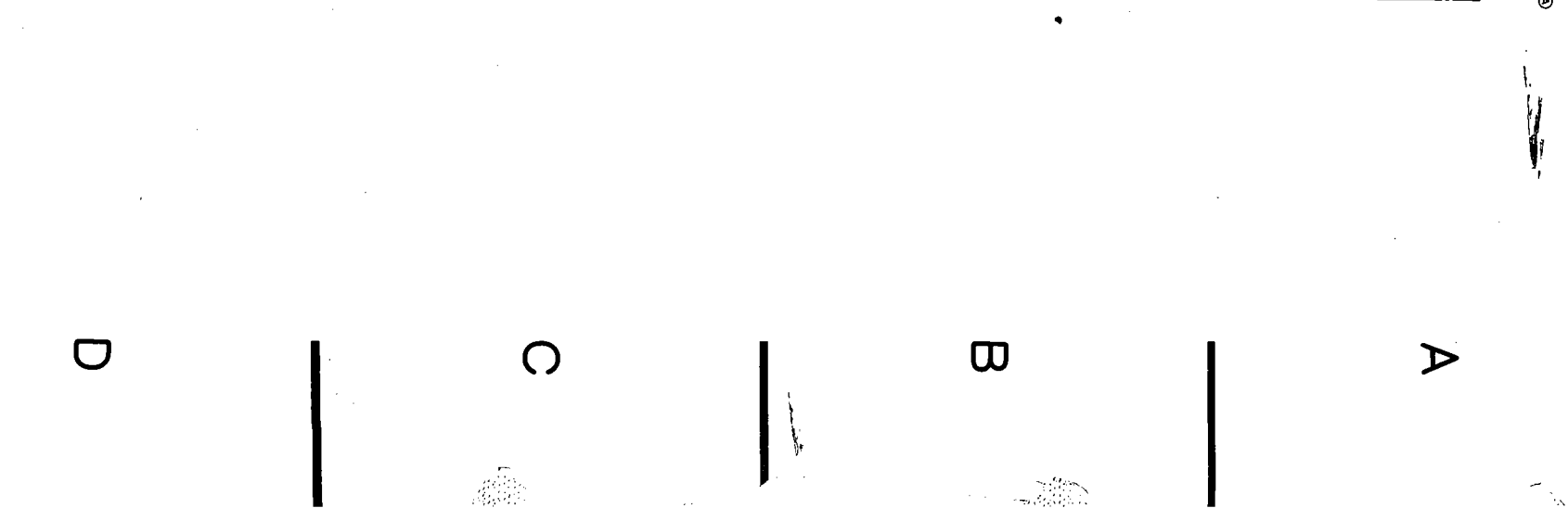
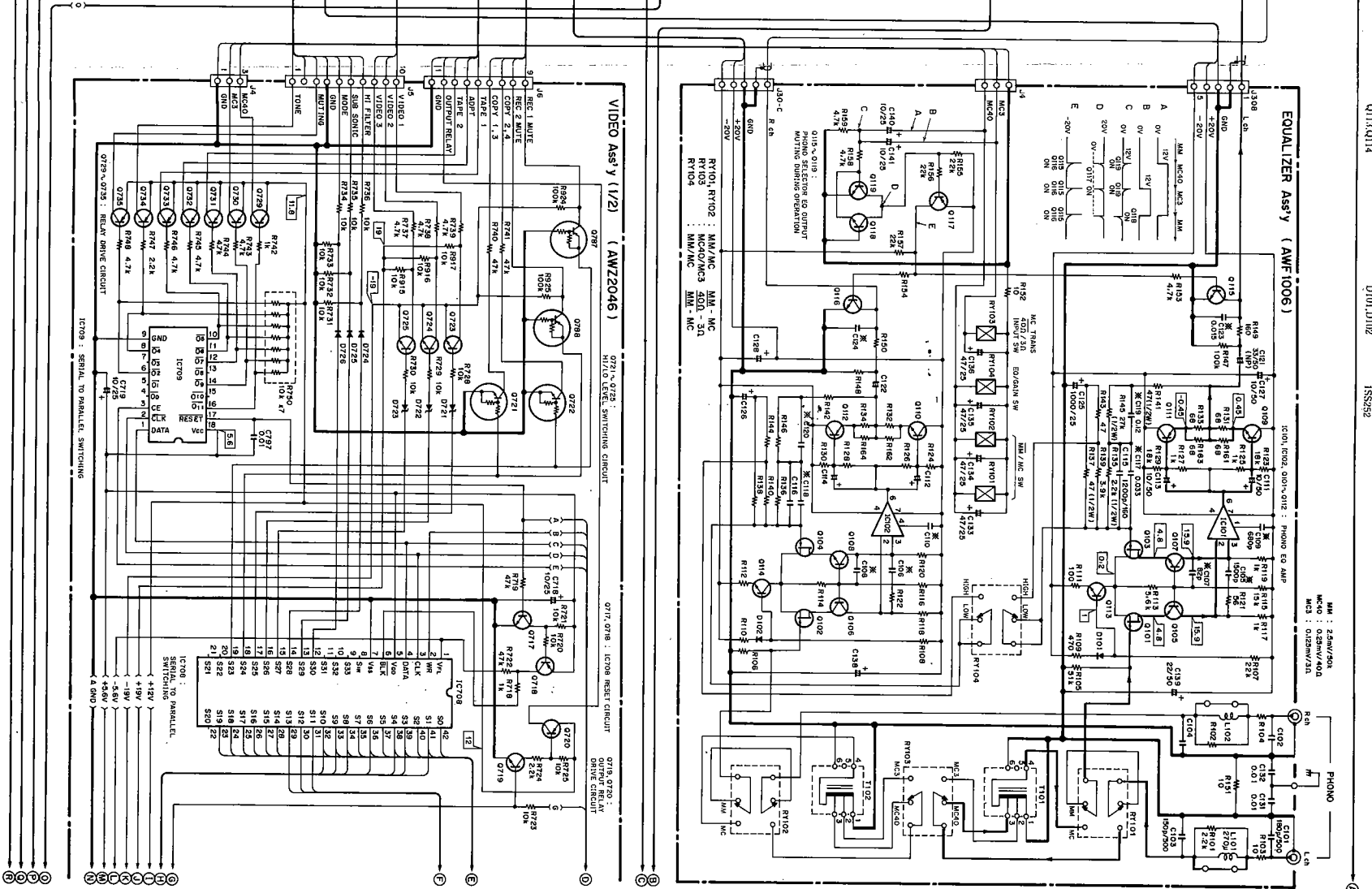
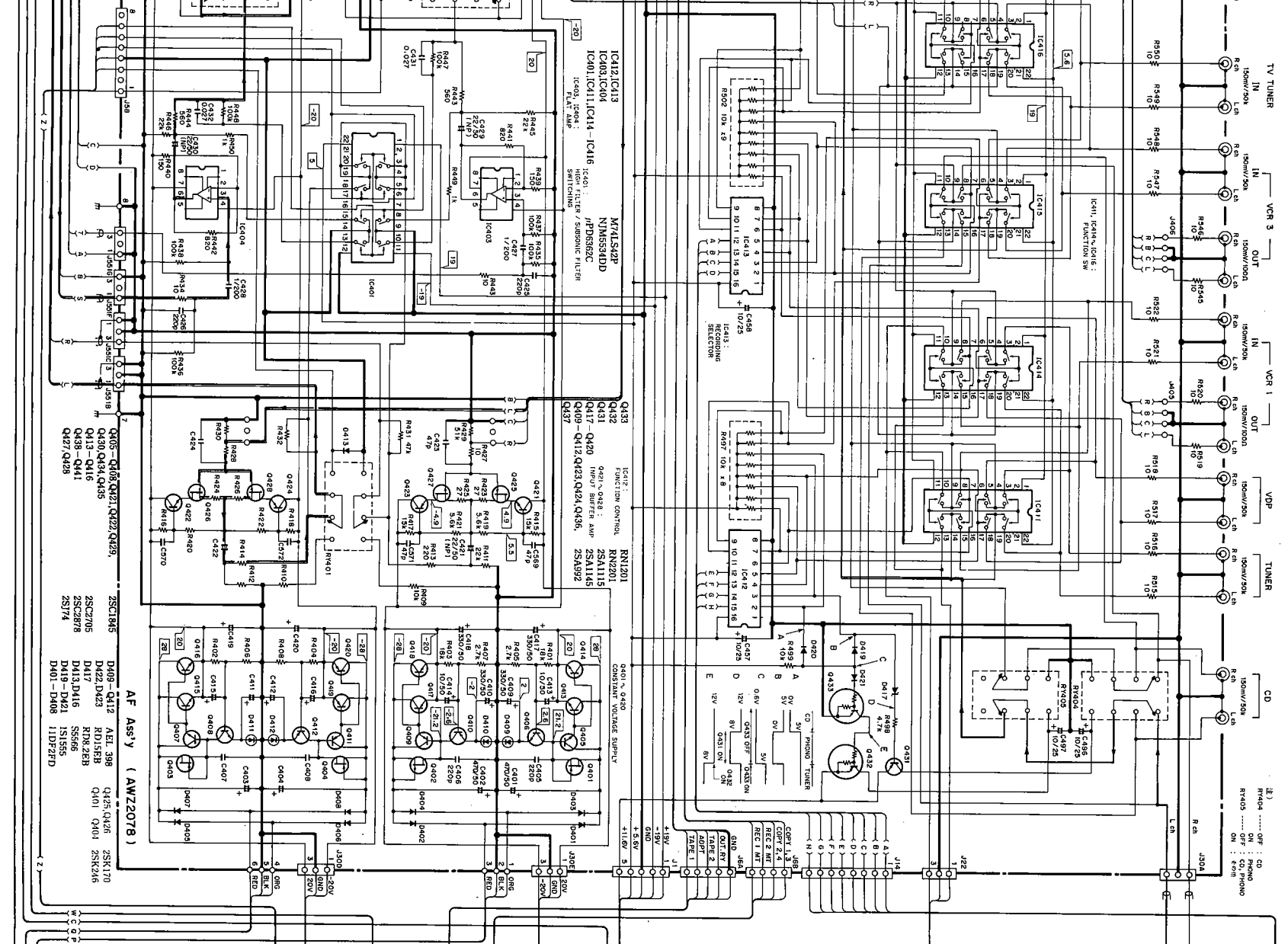
**ORDER NO.
ARZ1636**

STEREO CONTROL AMPLIFIER

C-91

PIONEER ELECTRONIC CORPORATION 4-1, Meguro 1-Chome, Meguro-ku, Tokyo 153, Japan
PIONEER ELECTRONICS SERVICE INC. P.O. Box 1760, Long Beach, California 90801 U.S.A.
PIONEER ELECTRONICS OF CANADA, INC. 505 Cochrane Drive, Markham, Ontario L3R 8E3 Canada
PIONEER ELECTRONIC [EUROPE] N.V. Keetberglaan 1, 2740 Beveren, Belgium
PIONEER ELECTRONICS AUSTRALIA PTY. LTD. 178-184 Boundary Road, Braeside, Victoria 3195, Australia TEL: [03] 580-9911
PIONEER ELECTRONIC CORPORATION 1988





AF assembly (AWZ2078)

SEMICONDUCTORS

Mark	Symbol & Description	Part No.
	C138,C139	CEXA220M50
	C121,C122	CEYANP330M50
	C131,C132	CKCYF103Z50
	C103,C104	CMA151J500
	C101,C102	CMA181J500
	C115,C116	CO5XA122J160

RESISTORS

Mark	Symbol & Description	Part No.
	R135,R136,R145,R146	RDR1/2PM□□□F
	R137,R138,R141,R142	RDR1/2PM□□□J
	R131-R134,R161-R164	RD1/4PMFL680J
	R152	RD1/4PM100J
	R153-R159	RD1/8PM□□□J
	Other resistors	RDR1/4PM□□□J

OTHERS

Mark	Symbol & Description	Part No.
	Terminal 2P (PHONO)	AKB1001

Control assembly (AWZ1055)

SEMICONDUCTORS

Mark	Symbol & Description	Part No.
	IC304,IC305	M74LS42P
	IC301	PDE012
	IC302,IC303	PD0012A
	Q301,Q302	2SC2458
	D301-D306	1SS131

COILS

Mark	Symbol & Description	Part No.
	X301 Ceramic resonator	ASS-046
	L301 Inductor (1mH)	ATH-098

CAPACITORS

Mark	Symbol & Description	Part No.
	C305,C306	CCDCH101J50
	C301,C304	CEANL470M16
	C307-C310	CEAS100M25
	C302,C303	CKDYB103K50
	C313	CKDYB103K500
	C311,C312	CKDYF103Z50

RESISTORS

Mark	Symbol & Description	Part No.
	R301 Resistor array	RA4S103J
	R310 Resistor array	RA8S103J
	Other resistors	RD1/8PM□□□J

AF assembly (AWZ2078)

SEMICONDUCTORS

Mark	Symbol & Description	Part No.
	IC417,IC418	LC4966
	IC407-IC410	M5201P
	IC405,IC406	M5220P
	IC412,IC413	M74LS42P
	IC403,IC404	NJM5534DD
	IC401,IC411,IC414-IC416	μPD6362C

Mark	Symbol & Description	Part No.
	Q433	RN1201
	Q432	RN2201
	Q431	2SA1115
	Q417-Q420	2SA1145
	Q409-Q412,Q423,Q424,Q436,Q437	2SA992
	Q405-Q408,Q421,Q422,Q429,Q430,Q434,Q435	2SC1845
	Q413-Q416	2SC2705
	Q438-Q441	2SC2878
	Q427,Q428	2SJ74
	Q425,Q426	2SK170
	Q401-Q404	2SK246

Mark	Symbol & Description	Part No.
	D409-Q412	AEL-398
	D422,D423 Zener diode	RD15EB
	D417 Zener diode	RD8.2EB
	D413,D416	S5566
	D419-D421	1S1555
	D401-D408	11DF2FD

RELAYS

Mark	Symbol & Description	Part No.
	RY401-RY409 Relay	ASR1018

CAPACITORS

Mark	Symbol & Description	Part No.
	C427,C428 (1μF/200V)	ACE-217
	C405-C408,C425,C426	ACE1014
	(220pF/100V)	
	C423,C424,C569-C572	ACE1023
	(47pF/100V)	
	C431,C432 (0.027μF/100V)	ACE1031
	C401-C404 (470μF/50V)	ACH1052
	C417-C420 (330/50V)	ACH1089
	C457,C458,C493-C497,C499,C500	CEAS100M25
	C567,C568	CEAS470M16
	C413-C416	CEXA100M50
	C409-C412	CEXA331M50
	C421,C422,C429,C430	CEYANP220M50
	C433-C436,C441,C442,C459-C464	CEYA100M50
	C445-C452	CEYA2R2M50
	C453-C456	CEYA3R3M50
	C437,C438	CEYA4R7M50

AF assembly (AWZ2046)

SEMICONDUCTORS

Mark	Symbol & Description	Part No.
	C443,C444	CFTXA823J50
	C498	CKDYB102K50
	C501,C502	CKDYB103K50
	C481,C482	CKDYB331K50
	C439,C440	CMA101J500

RESISTORS

Mark	Symbol & Description	Part No.
	R497 Resistor array	RA8S103J
	R502 Resistor array	RA8S103J
	R465,R466	RD1/2PM822J
	R469-R496,R498,R499,R503,R504,R535-R542,R573-R580	RD1/8PM□□□J
	R553,R554	RS1LMF221J
	Other resistors	RDR1/4PM□□□J

OTHERS

Mark	Symbol & Description	Part No.
	Terminal 4P (TAPE1, AUDIO ADAP, VCR1)	AKB-115
	Terminal 6P	AKB-117
	Terminal 6P	AKB1005
	Terminal 6P	AKB1066

Video assembly (AWZ2046)

SEMICONDUCTORS

Mark	Symbol & Description	Part No.
	IC708	LC7570
	IC709	PD0012A
	IC707	TC4011BP
	IC701-IC706	TC4066BP
	IC710	TC4069UBP

Mark	Symbol & Description	Part No.
	Q716	RN1201
	Q721,Q722	RN1203
	Q787,Q788	RN2203
	Q714,Q715,Q718,Q720,Q726,Q729-Q736,Q747,Q749,Q751,Q752,Q766,Q781,Q783,Q785	2SA1115
	Q704	2SA1145
	Q739,Q745	2SA1346
	Q708,Q742	2SA985A
	Q741	2SC2275
	Q717,Q719,Q723-Q725,Q737,Q743,Q748,Q750,Q753-Q765,Q767-Q774,Q776-Q779,Q786	2SC2603
	Q702	2SC2705
	Q713,Q744,Q780,Q782,Q784	2SC2878
	Q728,Q738,Q740,Q746	2SC3400
	Q706,Q710,Q712	2SD836A
	Q701,Q703,Q705,Q707,Q709,Q711	2SK246

AF assembly (AWZ2046)

SEMICONDUCTORS

Mark	Symbol & Description	Part No.
	D713 Zener diode	RD13EB
	D714 Zener diode	RD13ESB3
	D721-D723 Zener diode	RD18EB
	D753 Zener diode	RD2.7ESB
	D709,D710 Zener diode	RD20ESB2
	D729,D730 Zener diode	RD4.3ESB1
	D750 Zener diode	RD5.6ESB2
	D743 Zener diode	RD6.2ESB2
	D712 Zener diode	RD6.8ESB2
	D711 Zener diode	1SS252
	D724-D726,D731-D733,D735-D742,D744,D746,D751,D752	
	D715-D718	10E2FD
	D701-D708,D747	S5566

COILS

Mark	Symbol & Description	Part No.
	L701-L704 Inductor (100μH)	ATH-050
	L712 Inductor (5.6μH)	ATH-065
	L708 Inductor (15μH)	ATH-075
	L705,L711 Inductor (10μH)	ATH-078
	L714 Inductor (47μH)	ATH-082
	L716,L717 Inductor (1mH)	ATH-098
	L710 Inductor (33μH)	ATH-100
	L706,L707,L713 Inductor (56μH)	ATH-104
	DL701 Delay cable	ATL-034

CAPACITORS

Mark	Symbol & Description	Part No.
	C717 (47000μF/5.5V)	ACH1070
	C745	CCCCH121J50
	C740,C742	CCCCH330J50
	C764	CCCCH470J50
	C763	CCCCH680J50
	C749,C787,C794	CCCSL101J50
	C739,C785	CCCSL221J50
	C743,C793	CCCSL270J50
	C747,C759,C768,C771	CCCSL330J50
	C766	CCCSL390J50
	C781	CEAS010M50
	C718,C719,C723,C744,C754,C792,C796	CEAS100M25
	C722	CEAS100M50
	C708,C710,C724,C725,C738,C751,C760,C783,C784	CEAS101M10
	C748,C750,C769,C772,C776,C777	CEAS101M16
	C703-C706,C712	CEXA101M25
	C729,C732,C733,D736,C773-C775	CEAS102M10
	C791	CEAS102M6
	C713	CEAS101M25
	C711	CEAS102M25

5. SCHEMATIC DIAGRAM

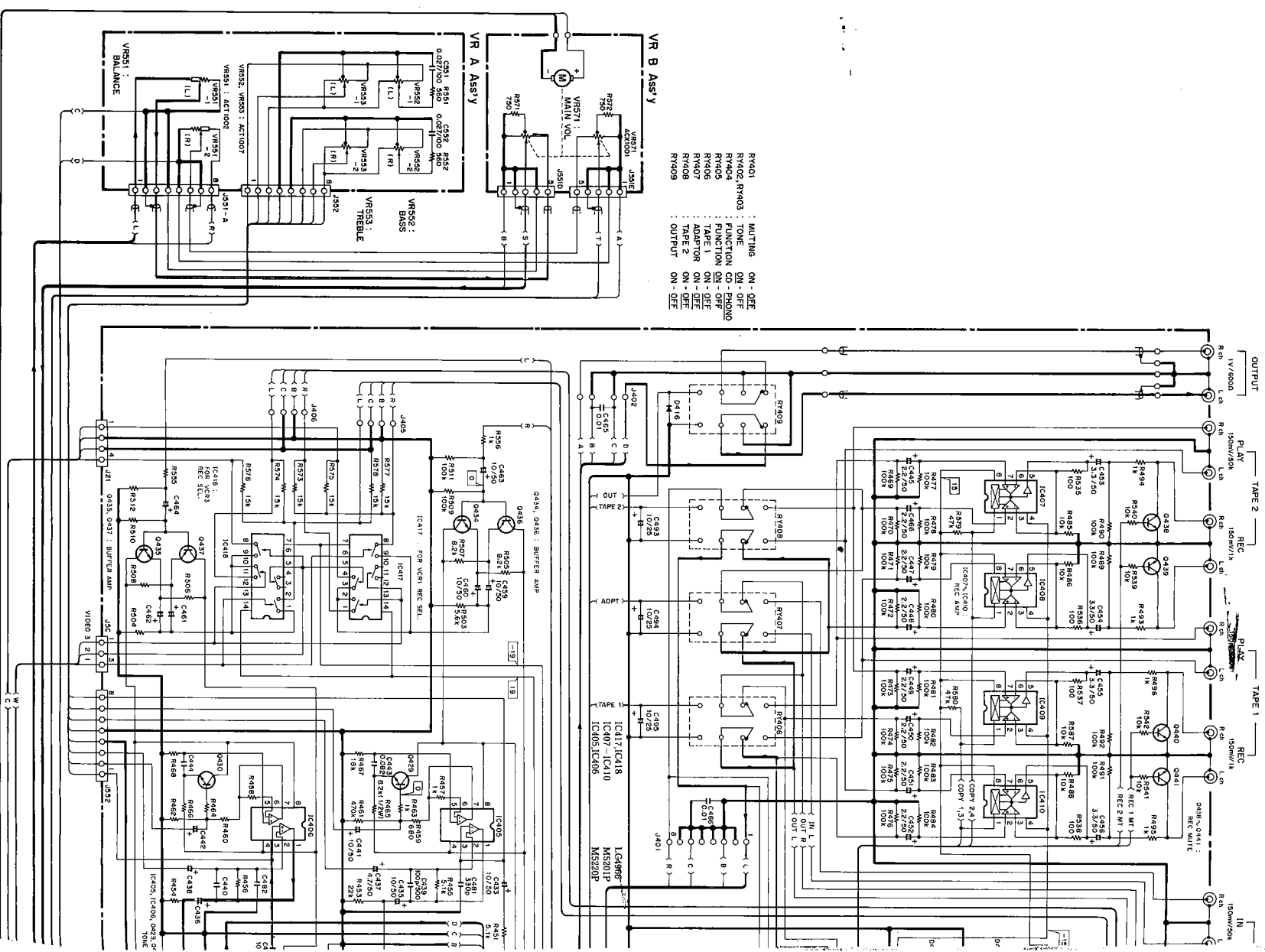
1. RESISTORS:
Indicated in Ω, 1/4W, and 1/8W, ±5% tolerance unless otherwise noted. K, M, ML, (F), ±1%, (G), ±2%, (K), ±10%, (M), ±20% tolerance
2. CAPACITORS:
Indicated in capacity (μF)/voltage (V) unless otherwise noted. p, pf, indication without voltage is 50V except electrolytic capacitor.
3. VOLTAGE, CURRENT:
V: Signal voltage at W + W, 8Ω output (1 KH)
V: DC voltage (V) at no input signal value in () is DC voltage at rated power.
4. OTHERS:
→: Signal route.
↻: Adjusting point.
The Δ mark found on some component parts indicates the importance of the safety factor of the part. Therefore, when replacing, be sure to use parts of identical designation.
X: Marked capacitors and resistors have parts numbers.
The underlined indicates the switch position.

This is the basic schematic diagram, but the actual circuit may vary due to improvements in design.

5. SWITCH
S1: Power switch ON - OFF

- S341: V. D. P.
- S342: VIDEO 1
- S343: VIDEO 2
- S344: VIDEO 3
- S345: VAUX
- S346: CD
- S347: PHONO
- S348: TUNER
- S349: TAPE 1
- S350: TAPE 2
- S351: RESEL
- S352: AUDIO ADAPTOR
- S353: VIDEO ADAPTOR
- S354: ENHANCER
- S355: HIGH CUT
- S356: SUBSONIC FILTER
- S357: MODE
- S358: DUBBING
- S359: PHONO SELECTOR
- S360: MUTE
- S361: VIDEO FUNCTION
- S362: STAND-BY
- S391: TONE

The underlined indicates the switch position.



Mark	Symbol & Description	Part No.
	C752, C753	CEAS220M16
	C756	CEAS221M10
	C728, C731, C735	CEAS221M16
	C761	CEAS331M16
	C714, C801	CEAS332M25
	C780	CEAS4R7M50
	C737, C741, C788, C789	CEAS470M10
	C758, C770	CEAS470M16
	C727, C730, C734, C778	CEAS470M25
	C709, C726, C757	CEAS471M10
	C701, C702	CEAS471M35
	C707	CEHAQ101M10
	C715, C716	CEHAQ101M25
	C746, C762	CKCYF102Z50
	C755, C765, C767, C782, C797	CKCYF103Z50
	C720, C721	CKCYF473Z50

Mark	Symbol & Description	Part No.
	R750 Resistor array	RA7S103J
	R795, R800, R835, R883, R887, R891	RD1/2PM□□□J
	R779, R781, R789, R791, R901, R903	RD1/4PM□□□J
	R867	FEA1/4PL680J
△	R912 - R914	FEA1/4PS□□□J
△	R904	RS1LMF4R7J
△	Other resistors	RD1/8PM□□□J

Mark	Symbol & Description	Part No.
	Terminal 3P (VIDEO1, VIDEO3)	AKB-134
	Terminal 3P (V ADAPTOR)	AKB1067
	Terminal 1P (MON.)	AKB1068
	Mini Jack (REMOTE CONTROL)	AKN-207
	5P DIN socket (RF:MOD)	AKP-081

Mark	Symbol & Description	Part No.
	IC601 - IC606	CX-894
	IC608, IC609	TC4053BP
	IC607	TC4066BP
	O601, O602, O605, O608, O609, O610	2SA1048
	O619	2SA965
	O613, O615, O617	2SC2235
	O603, O604, O607, O608, O611, O612, O620	2SC2458
	O614, O616, O618	2SK246

Mark	Symbol & Description	Part No.
	D602, D604, D606 Zener diode	RD13ESB2
	D607 Zener diode	RD5.1ESB1
	D608 - D619	1SS252
	D601, D603, D605	11E2
	D620	RD6.8ESB2

Mark	Symbol & Description	Part No.
	C619, C620, C625, C626, C631, C632	CCCSL330J50
	C622, C628, C634	CEAS101M10
	C601, C603, C605, C607, C609, C611, C613, C615, C617, C624, C630, C636, C642	CEAS101M16
	C621, C627, C633	CEAS102M10
	C637 - C640	CEAS330M25
	C623, C629, C635	CEAS331M16
	C602, C604, C606, C608, C610, C612, C614, C616, C618	CEAS470M16
	C641	CEAS470M25
	C643, C644	CKDYX473M25

Mark	Symbol & Description	Part No.
	R670 Resistor array	RA6S104J
	R609, R610, R615, R616, R623, R624, R629, R630, R637, R638, R643, R644	RD1/2PM□□□J
	R649	RD1/4PM222J
	R650	RS1LMF4R7J
△	Other resistors	RD1/8PM□□□J

Mark	Symbol & Description	Part No.
	4P Mini DIN socket (VCR1, VCR3, TV/AUX IN, MONITOR OUT)	AKP1016

Mark	Symbol & Description	Part No.
	D349, D351, D353, D355, D357, D368 - D372	AEL-451
	D341 - D348, D359 - D366, D373 - D381	AEL1004
	D350, D352, D354, D356, D358	AEL1005

Mark	Symbol & Description	Part No.
	D349, D351, D353, D355, D357, D368 - D372	AEL-451
	D341 - D348, D359 - D366, D373 - D381	AEL1004
	D350, D352, D354, D356, D358	AEL1005

Mark	Symbol & Description	Part No.
	S341 - S362 Tact switch (MUTE, VIDEO ADAPTOR, TAPE1, V/AUX, V.D.P, VIDEO1, CD, TAPE2, ENHANCER, MODE, VIDEO FUNCTION, DUBING, HI CUT, REC SEL, PHONO, VIDEO2, VIDEO3, TUNER, AUDIO ADAPTOR, SUB-SONIC FILTER, PHONO SELECTOR, STAND BY)	ASSG-711

Mark	Symbol & Description	Part No.
	R342, R343 Resistor array	RA4S391J
	R346 Resistor array	RA5S391J
	Other resistors	RD1/8PM□□□J

Mark	Symbol & Description	Part No.
	C551, C552 Polyester capacitor	COMXA273J100

Mark	Symbol & Description	Part No.
	S391 Tact switch (TONE)	ASG-711

Mark	Symbol & Description	Part No.
	VR551 Variable resistor (50K x 2)	ACT1002
	VR552, VR553 Variable resistor (10K x 2)	ACT1007
	R551, R552	RDRI/4PM561J

Mark	Symbol & Description	Part No.
	VR551 Variable resistor (50K x 2)	ACT1002
	VR552, VR553 Variable resistor (10K x 2)	ACT1007
	R551, R552	RDRI/4PM561J

Mark	Symbol & Description	Part No.
	VR551 Variable resistor (50K x 2)	ACT1002
	VR552, VR553 Variable resistor (10K x 2)	ACT1007
	R551, R552	RDRI/4PM561J

Mark	Symbol & Description	Part No.
	VR571 Variable resistor (15K x 2)	ACX1017
	R571, R572	RDRI/4PM751J

Mark	Symbol & Description	Part No.
	VR571 Variable resistor (15K x 2)	ACX1017
	R571, R572	RDRI/4PM751J

Mark	Symbol & Description	Part No.
	C798 - C800	CKCYF473Z50

Mark	Symbol & Description	Part No.
	R911	RD1/8PM750J

Mark	Symbol & Description	Part No.
	Terminal 1P (VIDEO2 OUT, VIDEO2 IN)	AKB1004

Mark	Symbol & Description	Part No.
	D745	1SS252

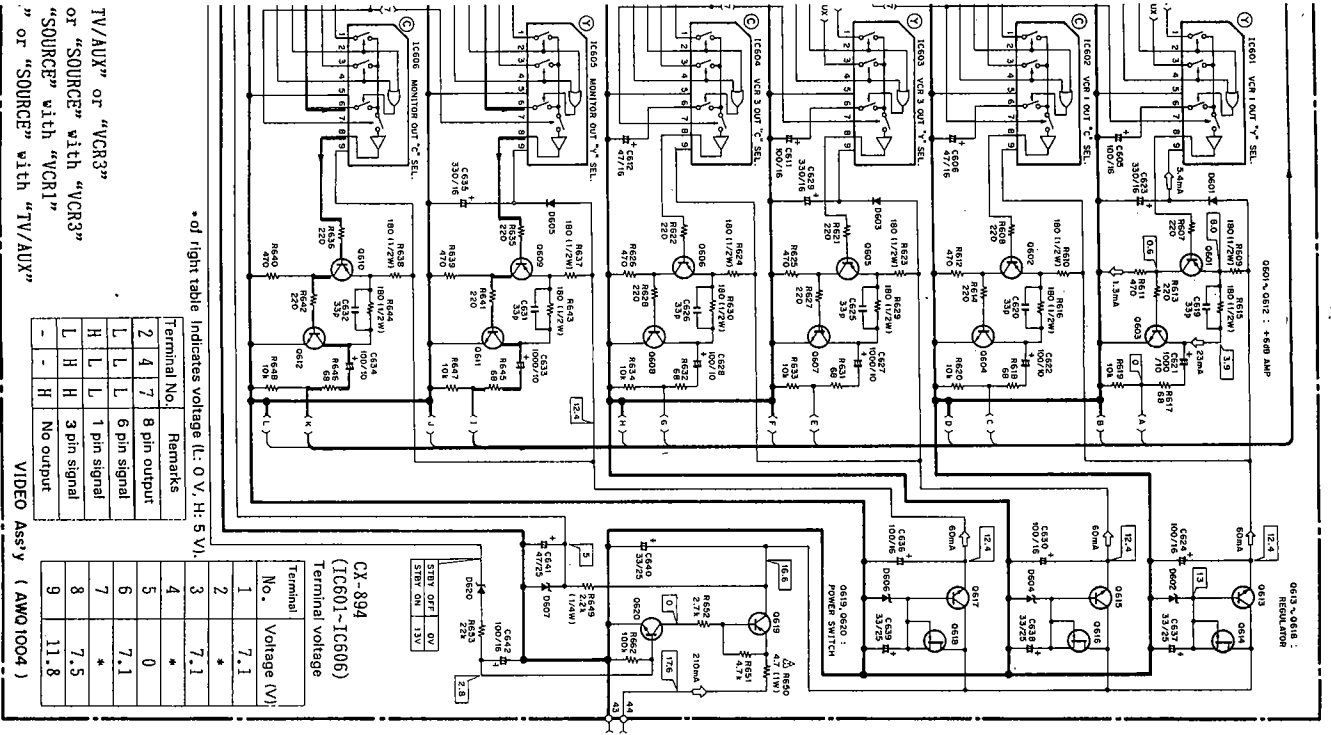
Mark	Symbol & Description	Part No.
	VR701 - VR703 Variable resistor (1K)	ACT1003

Mark	Symbol & Description	Part No.
	L715 Line filter	ATF-163

Mark	Symbol & Description	Part No.
	L715 Line filter	ATF-163

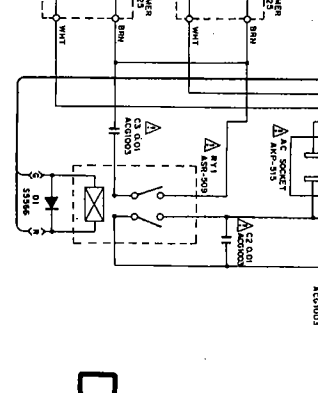
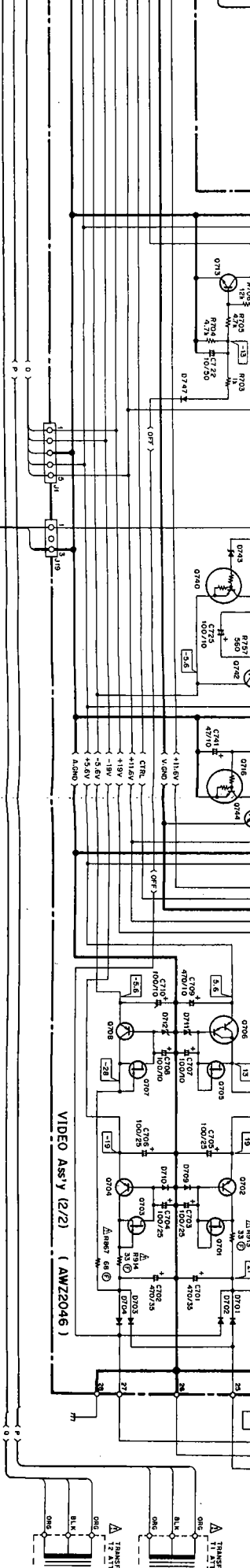
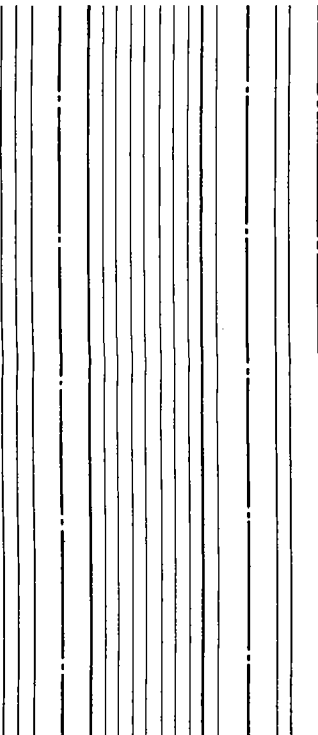
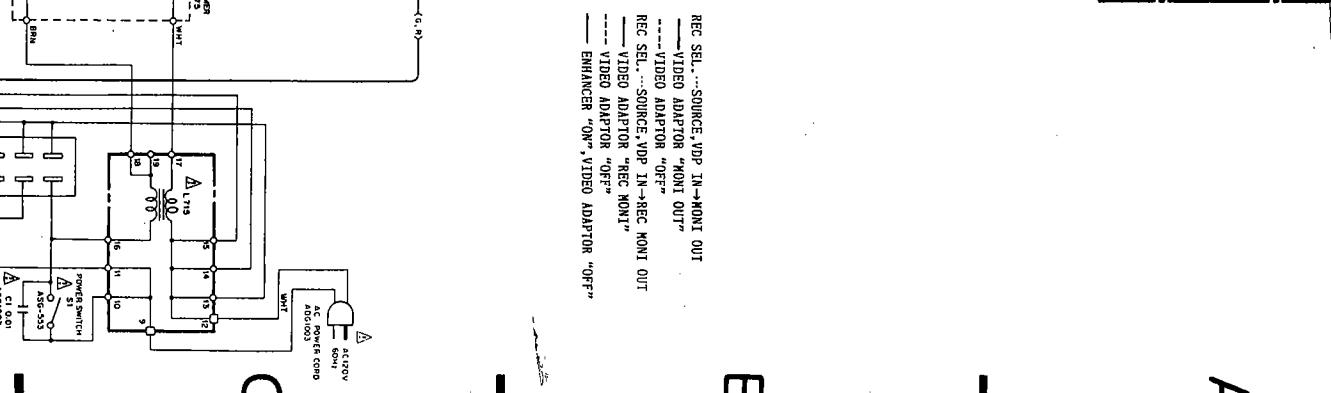
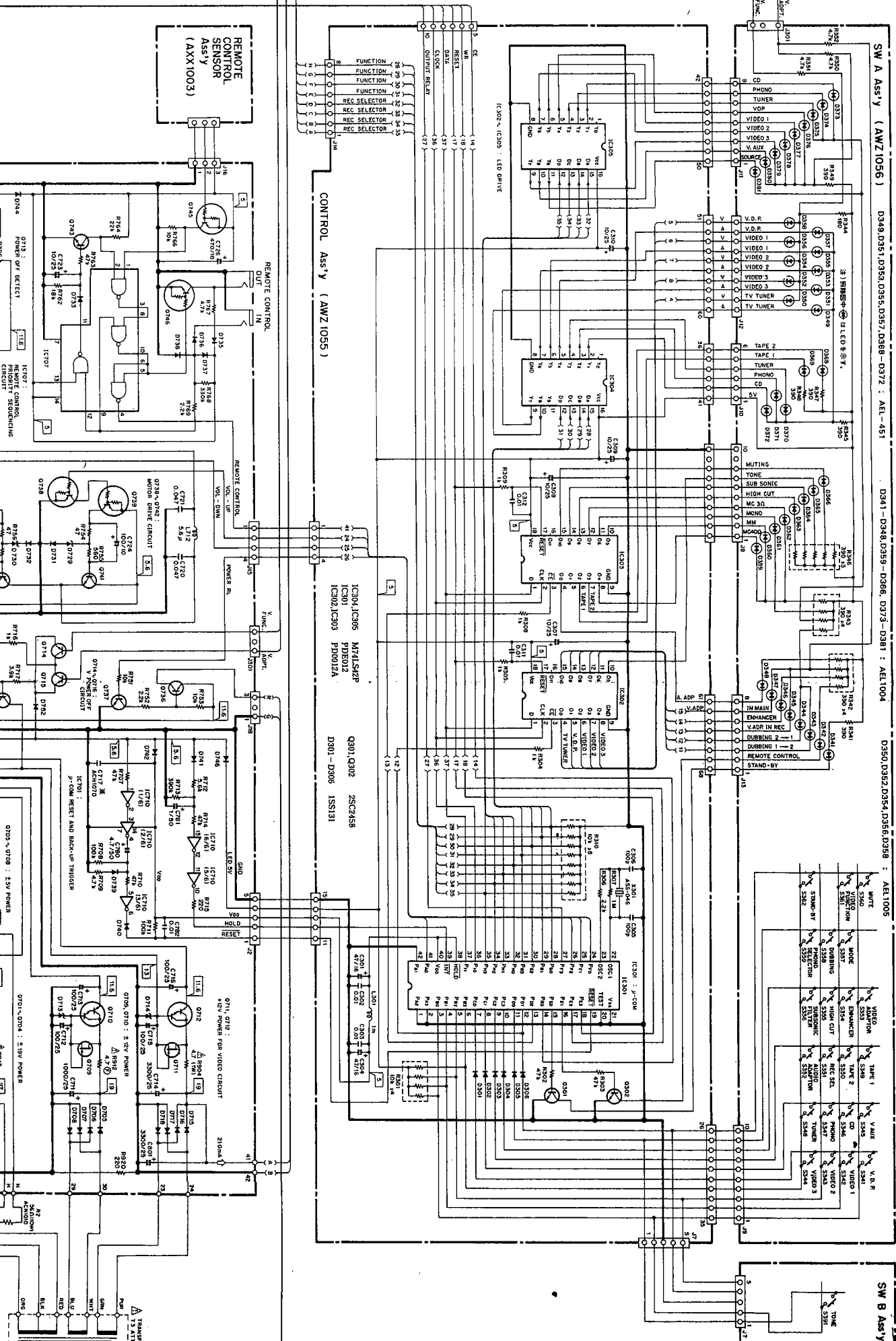
01-IC806 CX-894
 08-IC809 TC4058BP
 07 TC4058BP
 0801,0802,0805,0806,0809, 25A1048
 0819 25A985
 0813,0815,0817 25C235
 0803,0804,0807,0808,0811, 25C248
 0812,0820 25C248
 0814,0816,0818 25X248

D802,D804,D806 D807,D818
 D808-D818 D801,D803,D805
 R01,3E582
 R05,1E581
 1S5252
 11E2



*of right table indicates voltage (L: 0 V, H: 5 V).

Terminal No.	Remarks	Voltage (V)
1	8 pin output	7.1
2	6 pin signal	*
3	1 pin signal	7.1
4	3 pin signal	0
5		7.1
6		7.1
7		*
8		7.5
9	No output	11.8

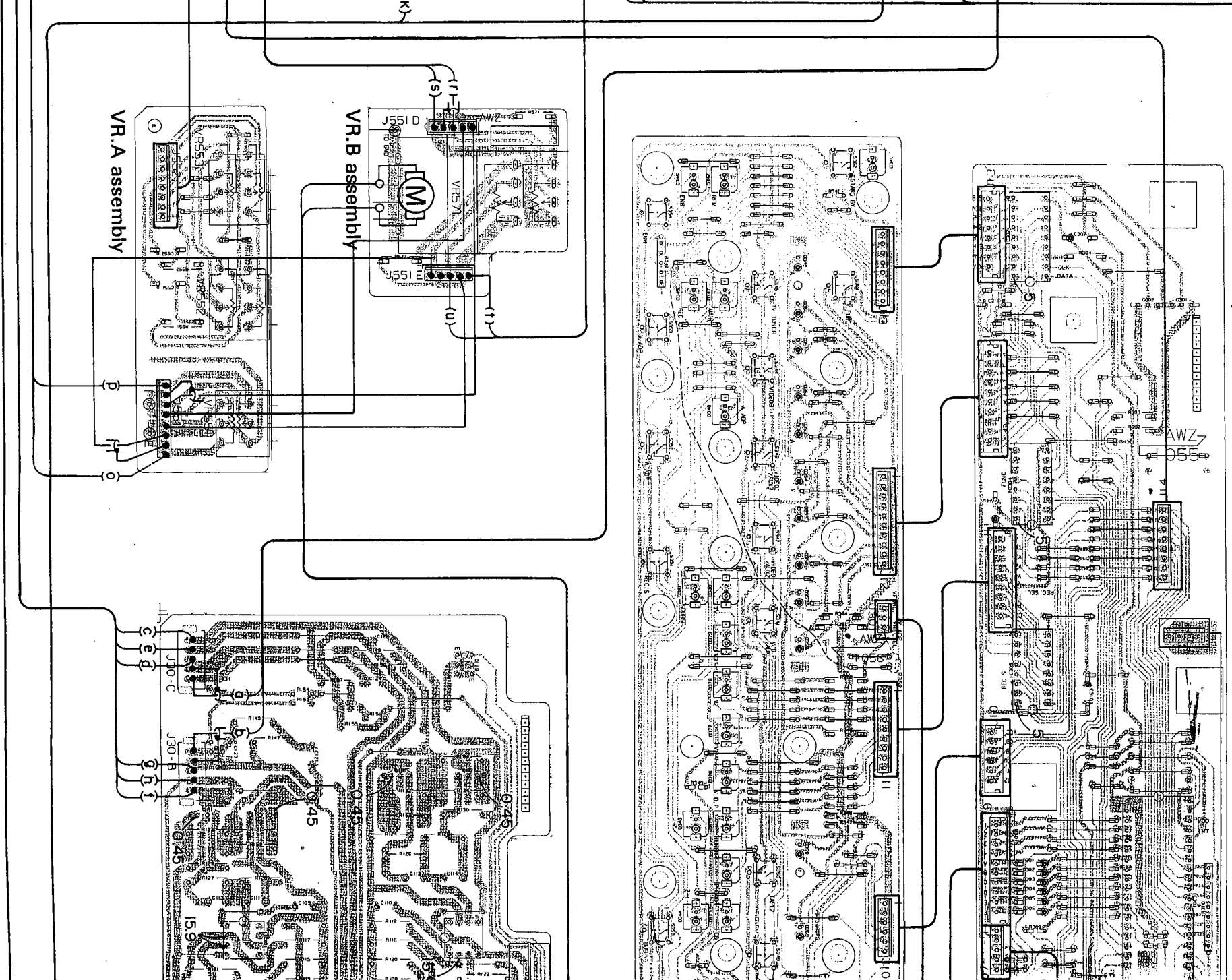
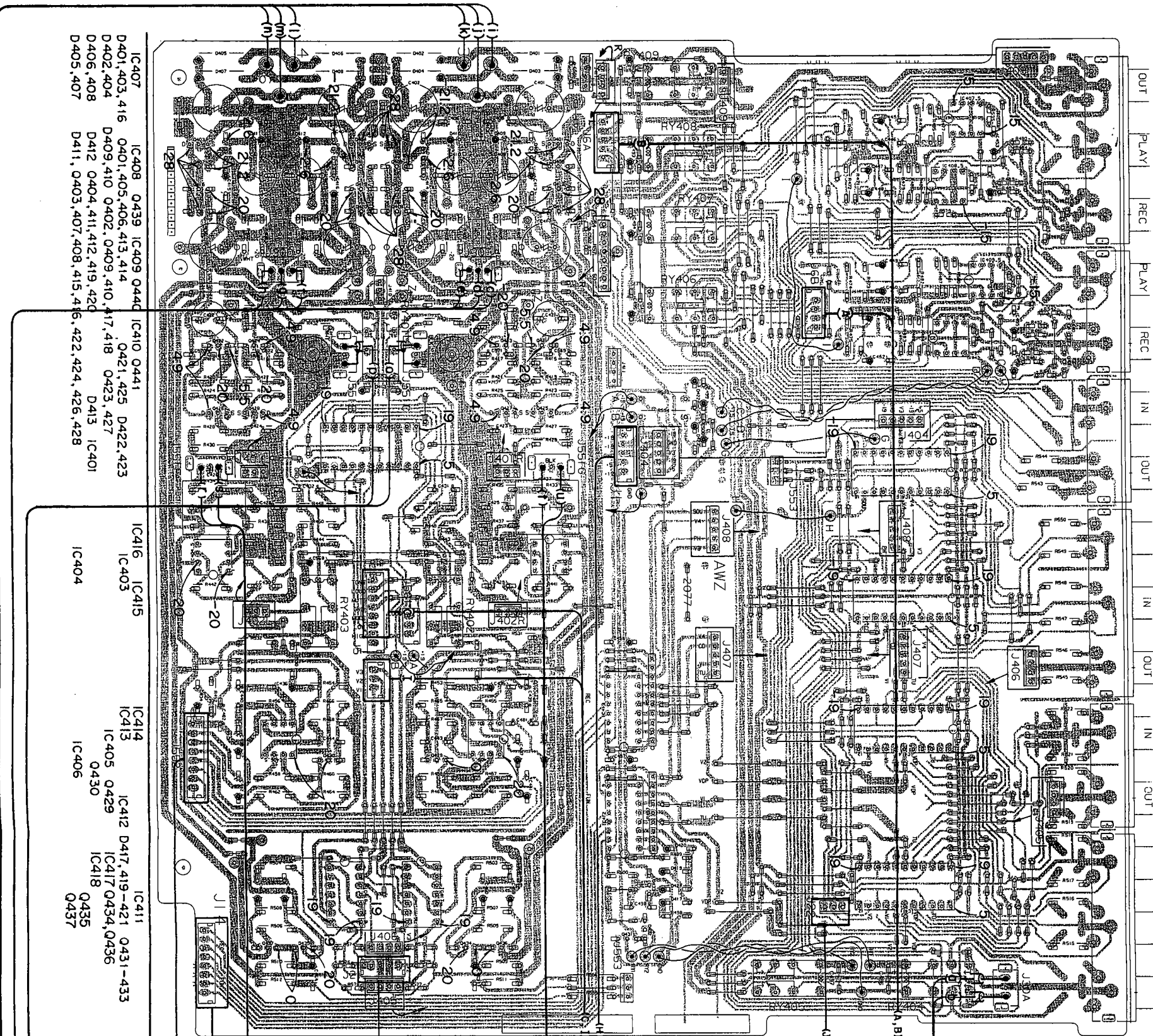


REC SEL...SOURCE, VDP IN, MONI OUT
 VIDEO ADAPTOR "MONI OUT"
 VIDEO ADAPTOR "OFF"
 REC SEL...SOURCE, VDP IN, REC MONI OUT
 VIDEO ADAPTOR "REC MONI"
 VIDEO ADAPTOR "OFF"
 ENHANCER "ON", VIDEO ADAPTOR "OFF"

6. P.C. BOARDS CONNECTION DIAGRAM

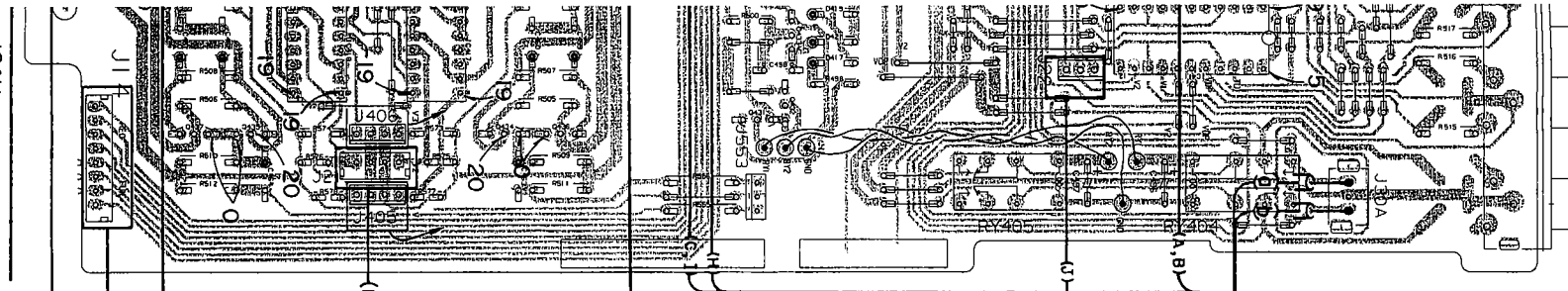
AF assembly (AWZ2078)

Control assembly (AWZ1055)

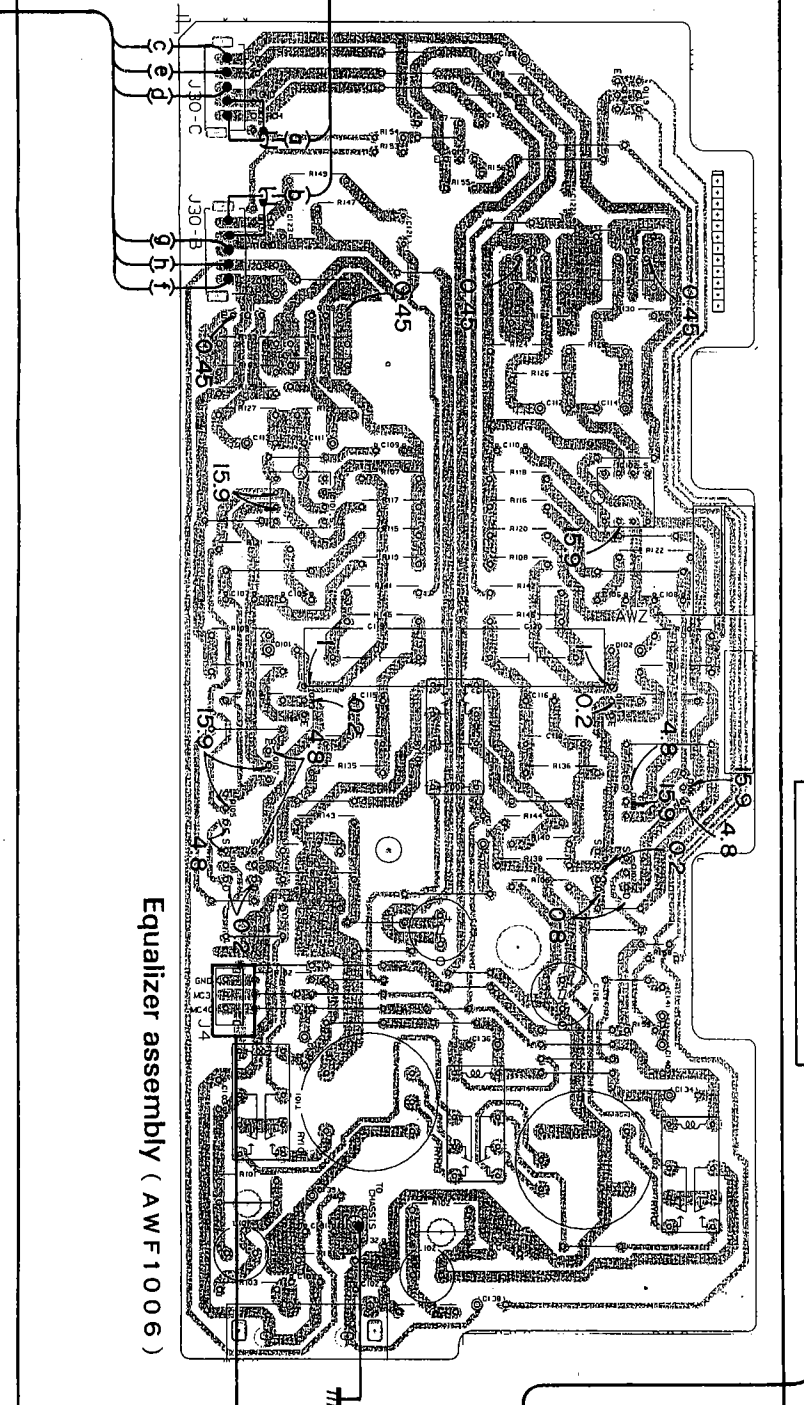
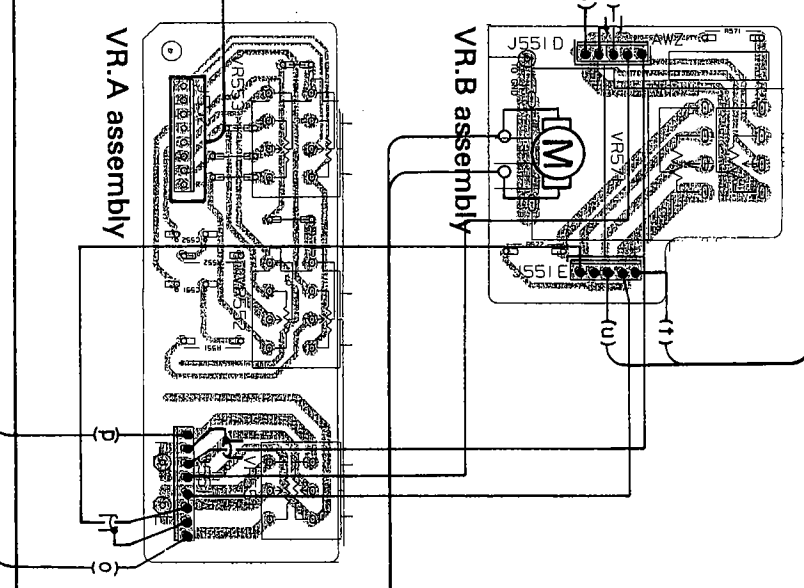


(A)(B)(C)(H)(I)

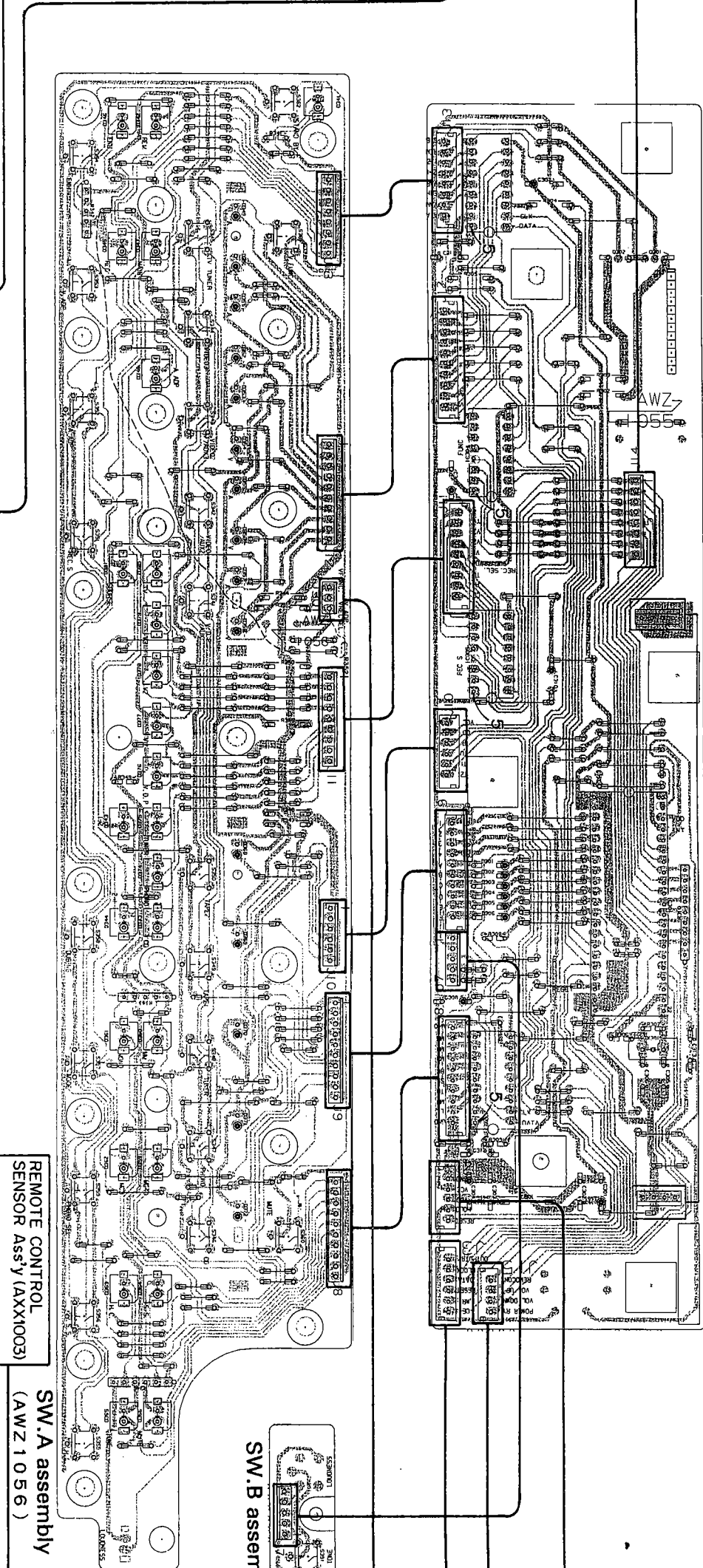
4 | 5 | 6 | 7 | 8 | 9 | 10



IC411
419-421 0431-433
417 0434, 0436
418 0435
0437



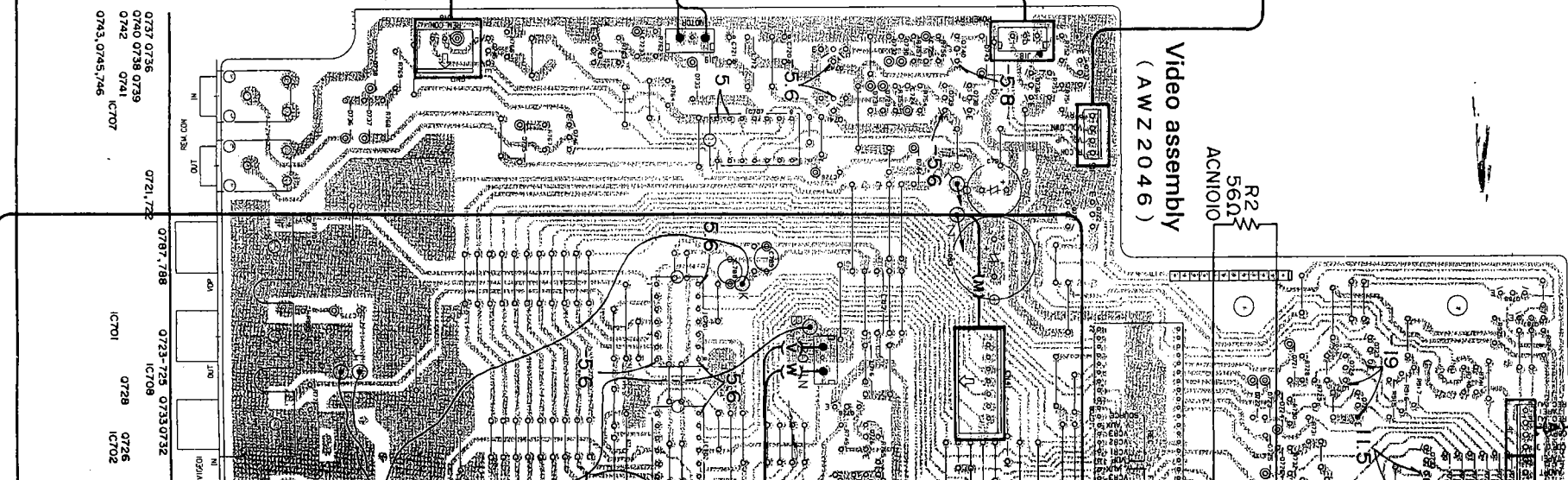
Equalizer assembly (AWF1006)



REMOTE CONTROL SENSOR Ass'y (AXX1003)

SW.A assembly (AWZ1056)

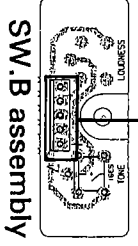
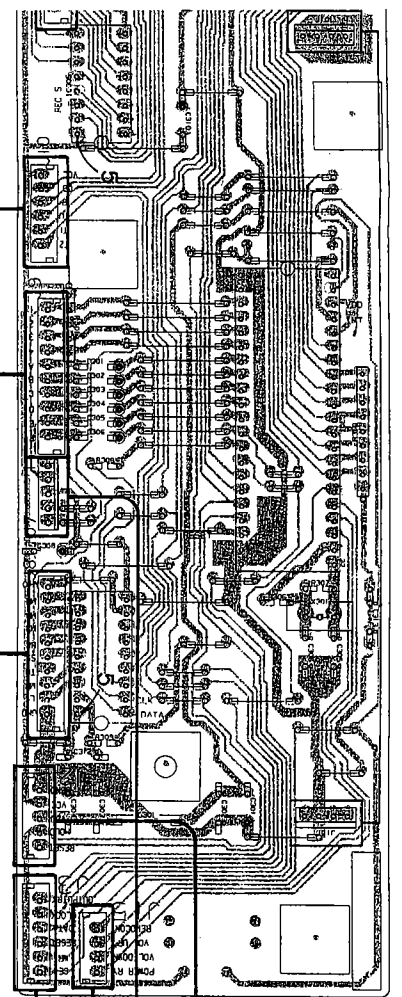
SW.B assembly



0727 0736
0728 0738 0739
0742 0741
0743, 0745, 746

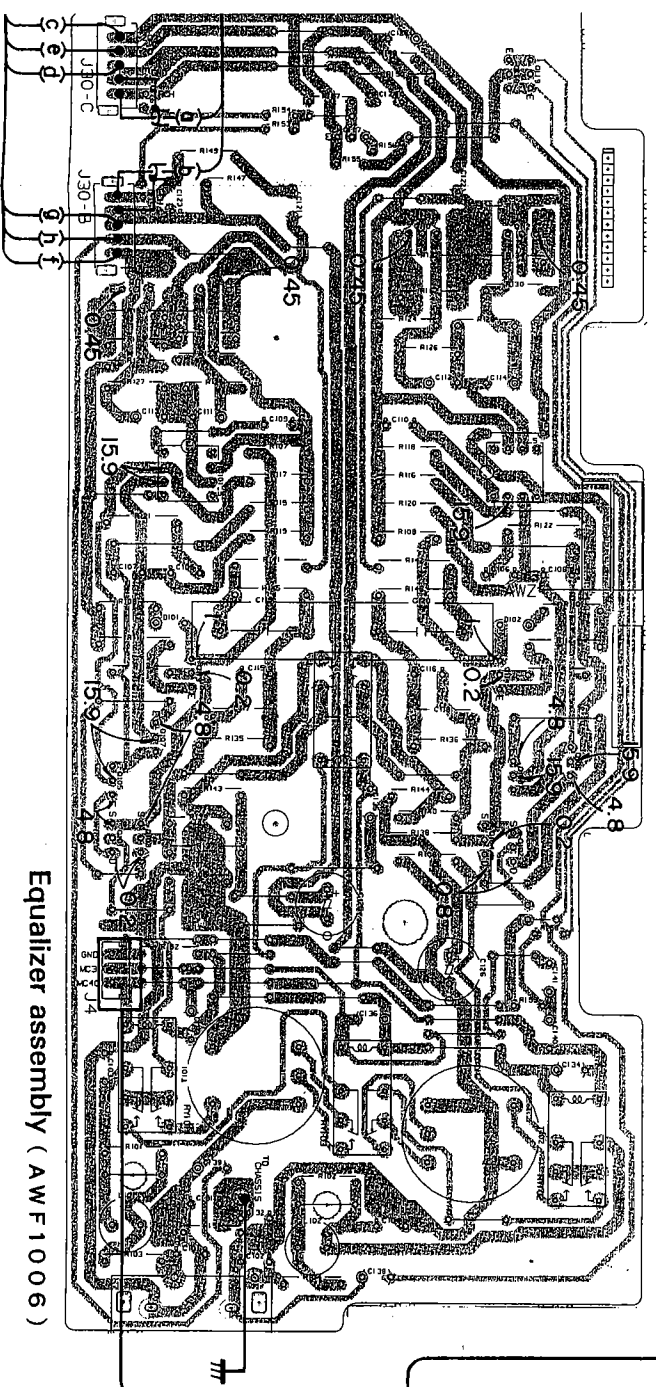
0721, 725
0727, 728
0723-725 0733, 0732
IC701
IC728
IC726
IC702

(A)H9XCH(X)1



REMOTE CONTROL
SENSOR Ass'y (AXX1003)

SW.A assembly
(AWZ1056)



Equalizer assembly (AWF1006)

Video assembly
(AWZ2046)

R2
560
ACN1010

0737 0736
0740 0738 0739
0742 0741 IC707
0743 0745 746

0721 722

0787 788

0723-725 0733 0732

IC701 0728 IC702

0731 0720 0735 0734 0719 0713 0729 730

0718 IC709 0717

0761 763 IC703 0786

0777

0763 766 0773

IC704

0747 0748

0781 0785 0783

0784 0780 0782

0714-716

0711 712 0744 0701-704

0779 0788 0776

0736 0770 0735 0789 0771 772

IC706

0789 0750

0784 0751

0752 0753

D

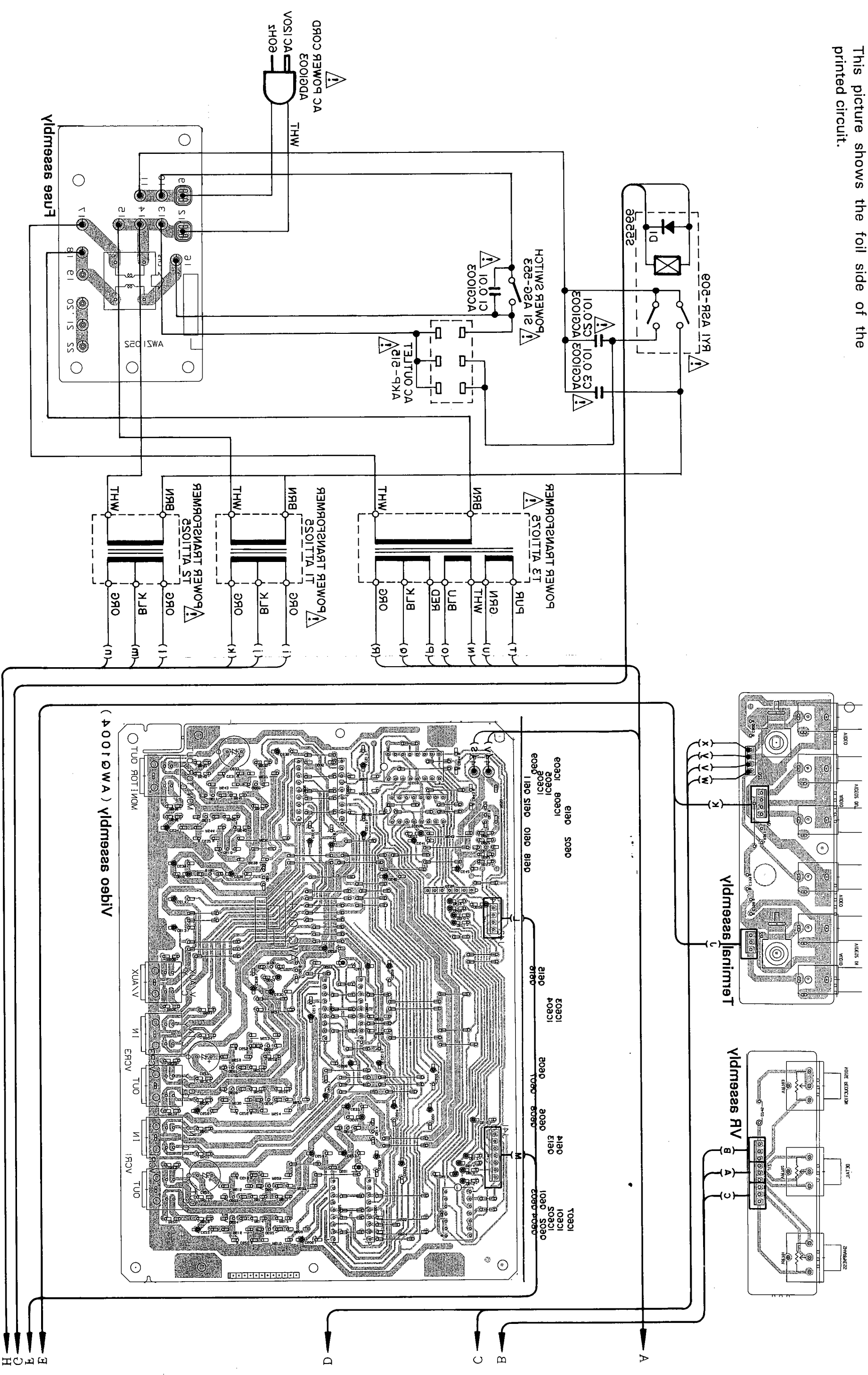
C

B

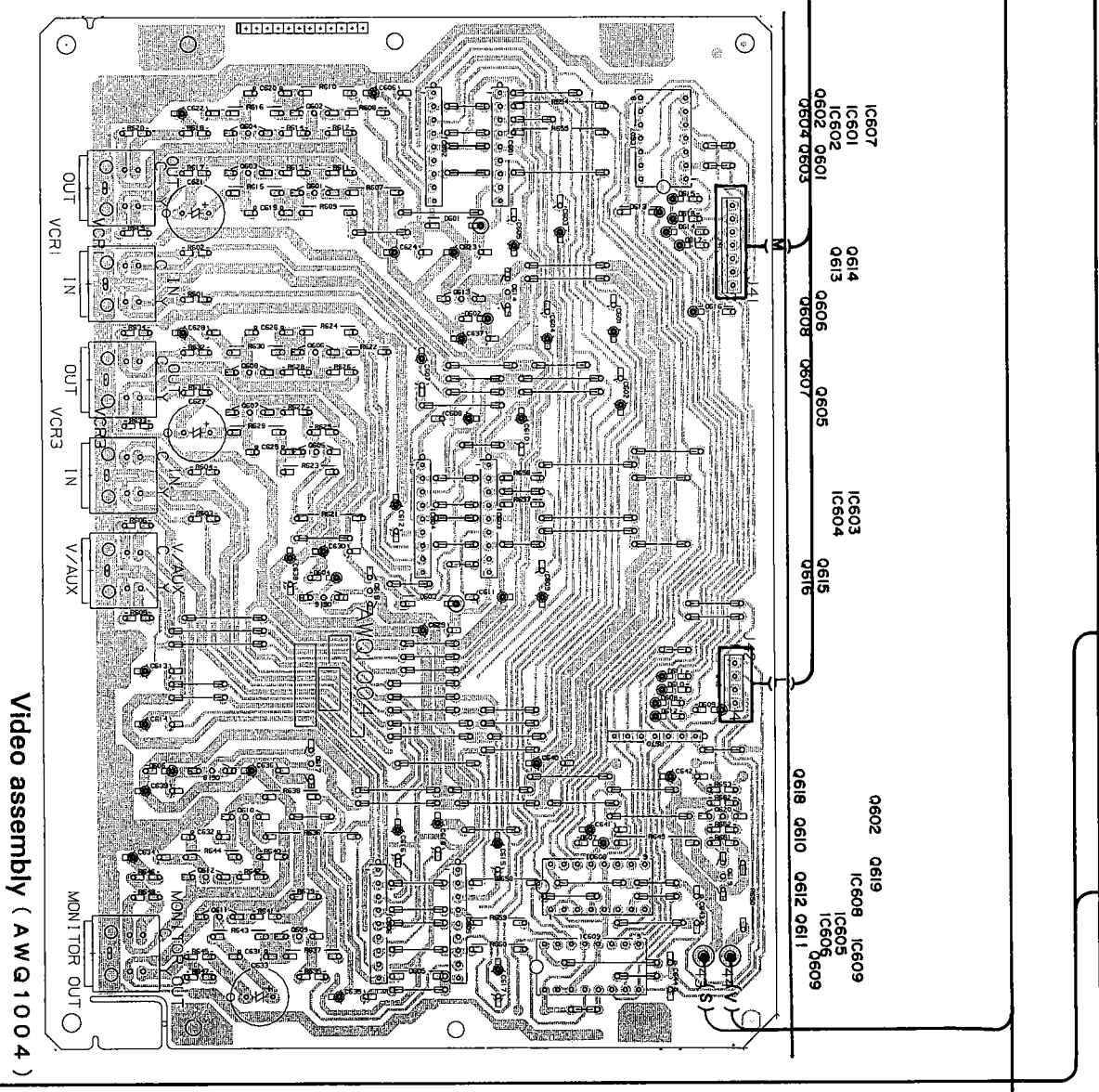
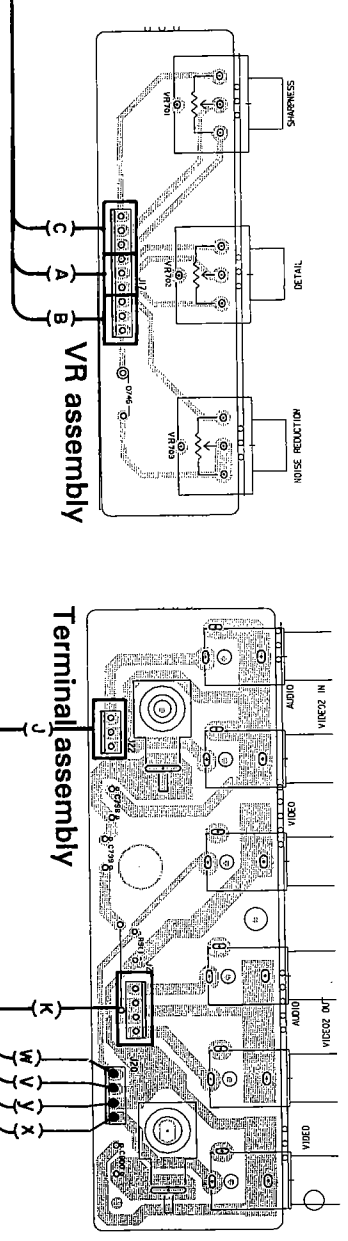
A

D C B A

NOTE:
This picture shows the foil side of the
printed circuit.



1 2 3 4 5 6



NOTE

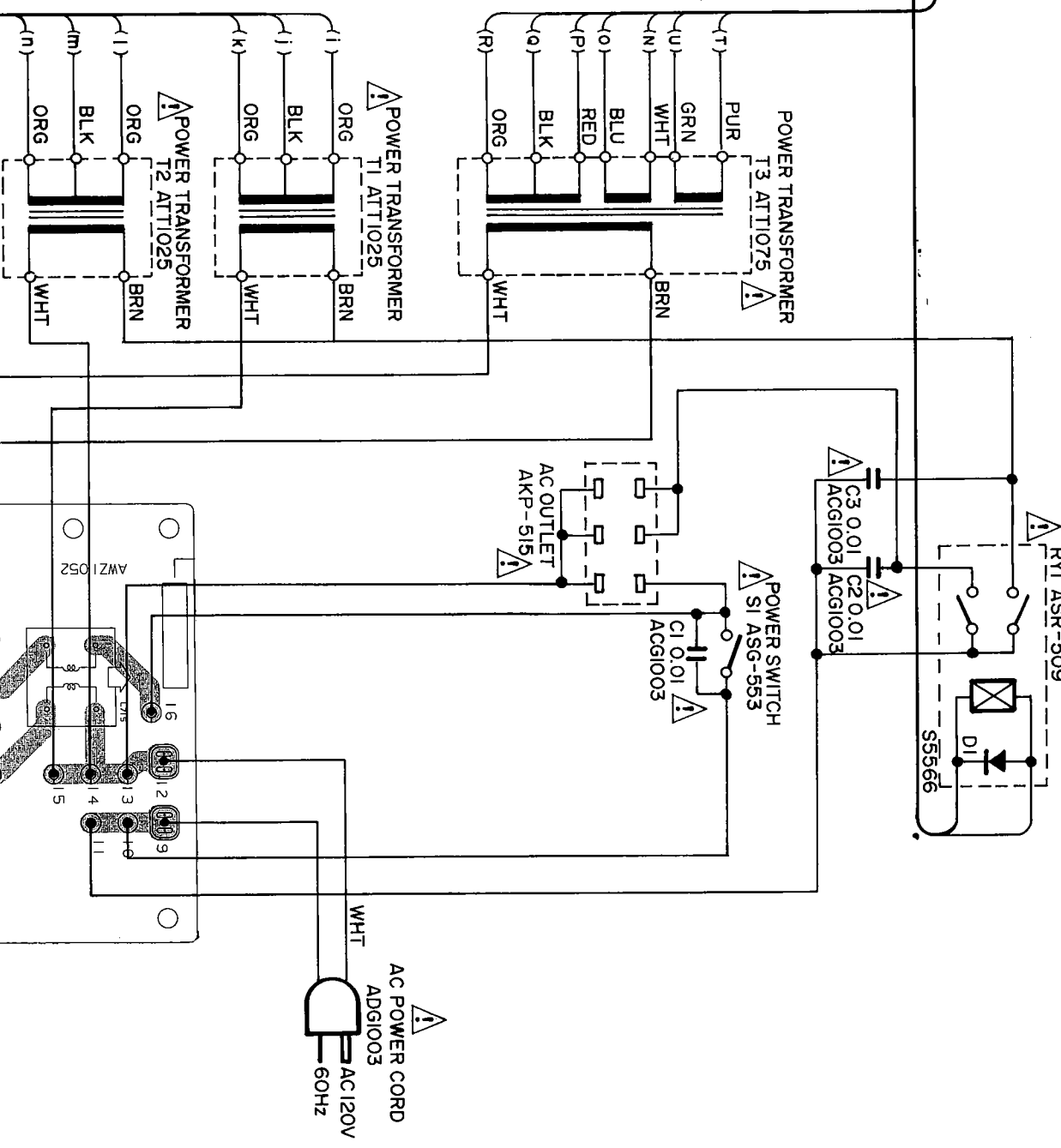
- The P.C.B. connection diagram is viewed from the parts mounted side.
- The parts which have been mounted on the board can be replaced with those shown with the corresponding wiring symbols listed in the following Table.

P.C.B. pattern diagram indication	Corresponding part symbol	Part Name
EO 0904	EO or ED	Transistor
0215	0215	Resistor type transistor
0203	0203	Diode
0237	0237	Relistor
CS13	CS13	Capacitor (polarity)
CS16	CS16	Capacitor (Non-polarity)

Others

P.C.B. pattern diagram indication	Part Name
IC	IC
S	Switch
RV	Relay
L	Coil
F	Filter
VR	Variable resistor or Sintered resistor

- The capacitor terminal marked with @ (double circles) shows negative terminal.
- The diode terminal marked with @ (double circles) shows cathode side.
- The transistor terminal to which E is wired shows the emitter.

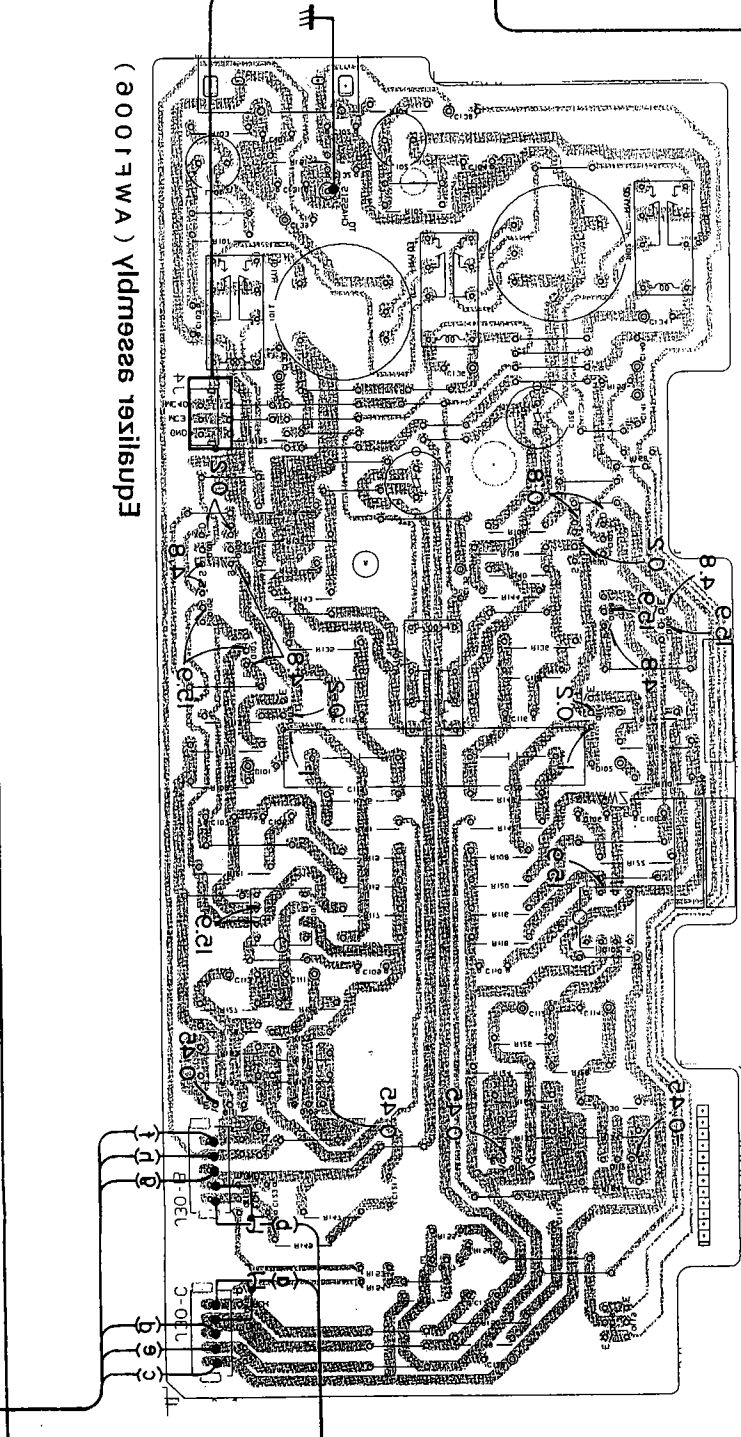
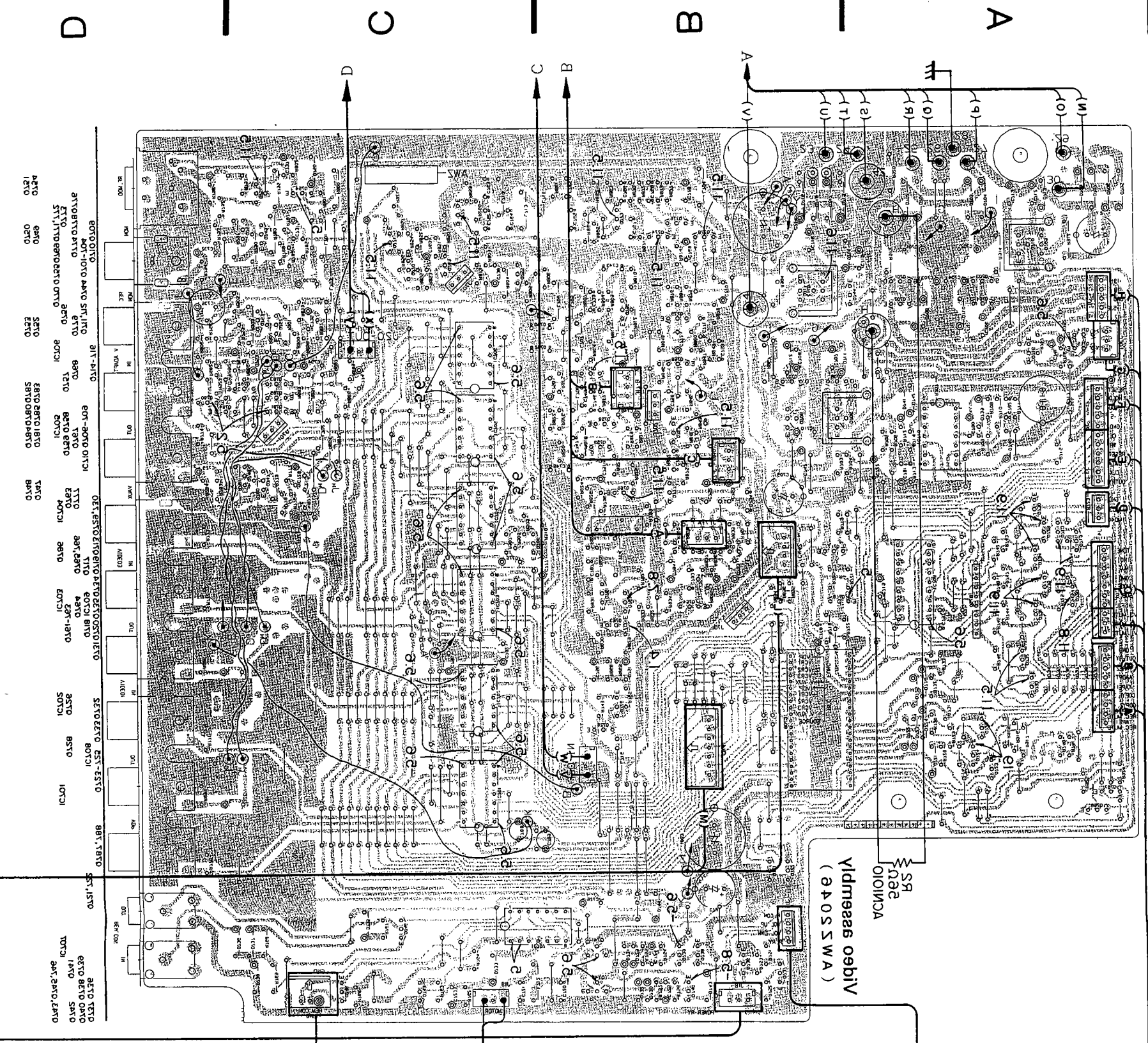


A B C D E F G H

1 2 3 4 5 6

9 7 8 9 10 11 12 13 14 15 16 17 18 19 20 21 22 23 24 25 26 27 28 29 30 31 32 33 34 35 36 37 38 39 40 41 42 43 44 45 46 47 48 49 50 51 52 53 54 55 56 57 58 59 60 61 62 63 64 65 66 67 68 69 70 71 72 73 74 75 76 77 78 79 80 81 82 83 84 85 86 87 88 89 90 91 92 93 94 95 96 97 98 99 100

H
C
E
E



REMOTE CONTROL SENSORS (VXXXXA) (A201SWA)

Vidmessas A.W2 (A201SWA)

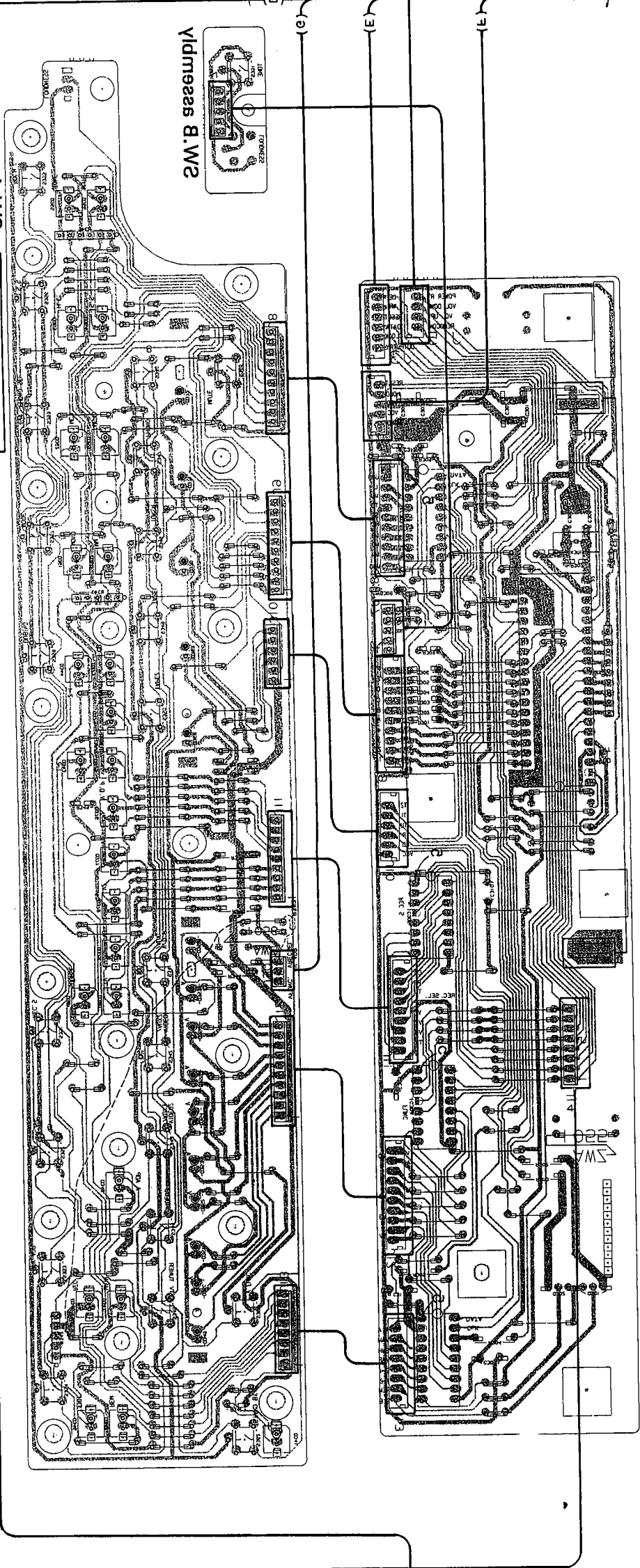
Vidmessas B.W2

Vidmessas obliV (A40SSWA)

(VXXXXA)

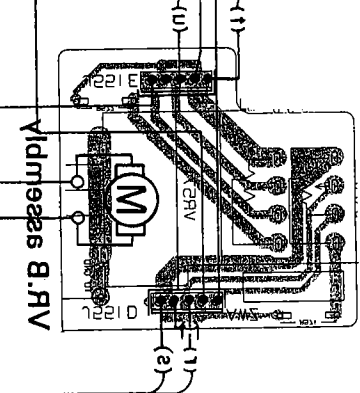
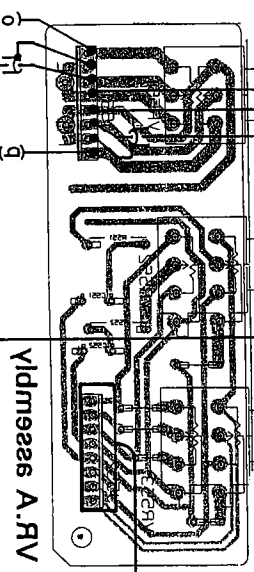
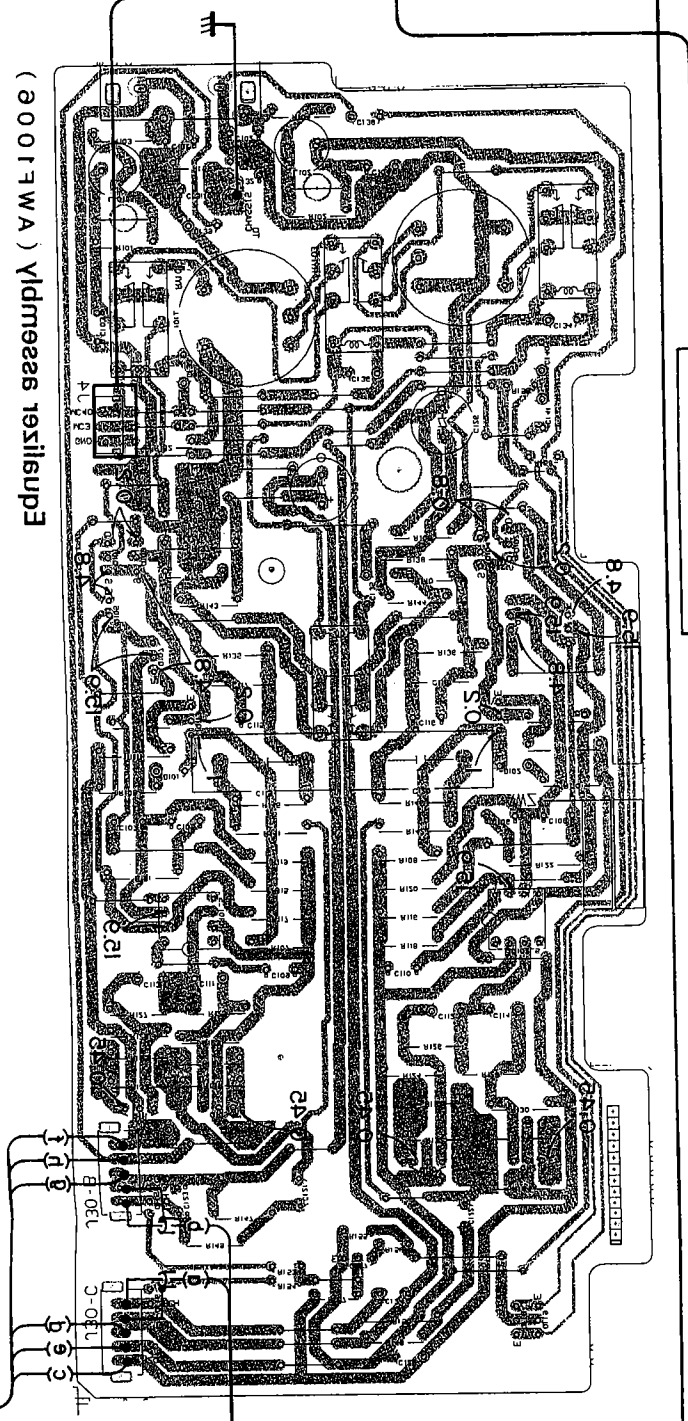
Control sasamipi (a a o i s w a) Vidmegasas 7A

(8 T O S S W A) Vidmegasas 7A



Vidmegasas B.W2

Vidmegasas A.W2 (e a o i s w a)
ЛОРТМОС ЕТРОМЕС
(СООИХХА) 'азаа РОСМЕС



(a o o i r w a) Vidmegasas testilupeE

11A21
15A-61A, 71A2 81A21
8E5A0, 1A5A0 71A21
81A21
8A21
2E2A0

2A120 2P120
0A120 0A120
0A120 0A120
0A120 0A120
0A120 0A120
0A120 0A120
0A120 0A120
0A120 0A120

0M37 0M42 0M43 0M44 0M45 0M46 0M47 0M48 0M49 0M50 0M51 0M52 0M53 0M54 0M55 0M56 0M57 0M58 0M59 0M60 0M61 0M62 0M63 0M64 0M65 0M66 0M67 0M68 0M69 0M70 0M71 0M72 0M73 0M74 0M75 0M76 0M77 0M78 0M79 0M80 0M81 0M82 0M83 0M84 0M85 0M86 0M87 0M88 0M89 0M90 0M91 0M92 0M93 0M94 0M95 0M96 0M97 0M98 0M99 0M100

XD1063)

7.2 ELECTRICAL PARTS LIST

NOTES:

- Parts without part number cannot be supplied.
- Parts marked by "⊗" are not always kept in stock. Their delivery time may be longer than usual or they may be unavailable.
- The Δ mark found on some component parts indicates the importance of the safety factor of the part. Therefore, when replacing, be sure to use parts of identical designation.
- When ordering resistors, first convert resistance values into code form as shown in the following examples.
- Ex. 1 When there are 2 effective digits (any digit apart from 0), such as 560 ohm and 47k ohm (tolerance is shown by J = 5%, and K = 10%):
560Ω 56 X 10¹ 561..... RDI4PS ⊗ ⊗ ⊗ J
47kΩ 47 X 10⁴ 473..... RDI4PS ⊗ ⊗ ⊗ J
0.5Ω 0R5..... RNZH ⊗ ⊗ ⊗ K
1Ω 010..... RSIP ⊗ ⊗ ⊗ K
- Ex. 2 When there are 3 effective digits (such as in high precision metal film resistors):
5.62kΩ 562 X 10¹ 5621..... RNI4SR ⊗ ⊗ ⊗ F

NS

When there are 2 effective digits (any digit apart from 0), such as 560 ohm and 47k ohm (tolerance is shown by J = 5%, and K = 10%):

SEMICONDUCTORS

Mark	Symbol & Description	Part No.
IC01	IC01	PD5068-A
IC02	IC02	AZC1045
IC03	IC03	AZC1046
IC04	IC04	AZC1047
IC05	IC05	AZC1048
001, 002	001, 002	AZC1050
003, 004	003, 004	AZC1051
005	005	AZC1052
D01, D02, D07-D14	D01, D02, D07-D14	AZC1056
D03-D06	D03-D06	AZC1049
PHD01	PHD01	AZC1055
LED01, LED02	LED01, LED02	AZC1054
LED01, LED02	LED01, LED02	AZC1053

RESISTORS

Mark	Symbol & Description	Part No.
R01	R01 (8.2K)	AZC1064
R02	R02 (4.7K)	AZC1065
R03, R08	R03, R08 (33K)	AZC1066
R04	R04 (220K)	AZC1067
R05, R17, R39	R05, R17, R39 (10K)	AZC1068
R06	R06 (82K)	AZC1069
R07, R11, R30-R38	R07, R11, R30-R38 (100K)	AZC1073
R09	R09 (6.8K)	AZC1070
R10	R10 (56K)	AZC1071
R12	R12 (1M)	AZC1072
R13, R16	R13, R16 (880Ω)	AZC1075
R14	R14 (3.9Ω)	AZC1078
R15	R15 (10Ω)	AZC1076
R18, R22-R29	R18, R22-R29 (47K)	AZC1077
R19-R21	R19-R21 (2.2K)	AZC1074

OTHERS

Mark	Symbol & Description	Part No.
X1	X1 Resonator (8MHz)	AZC1057

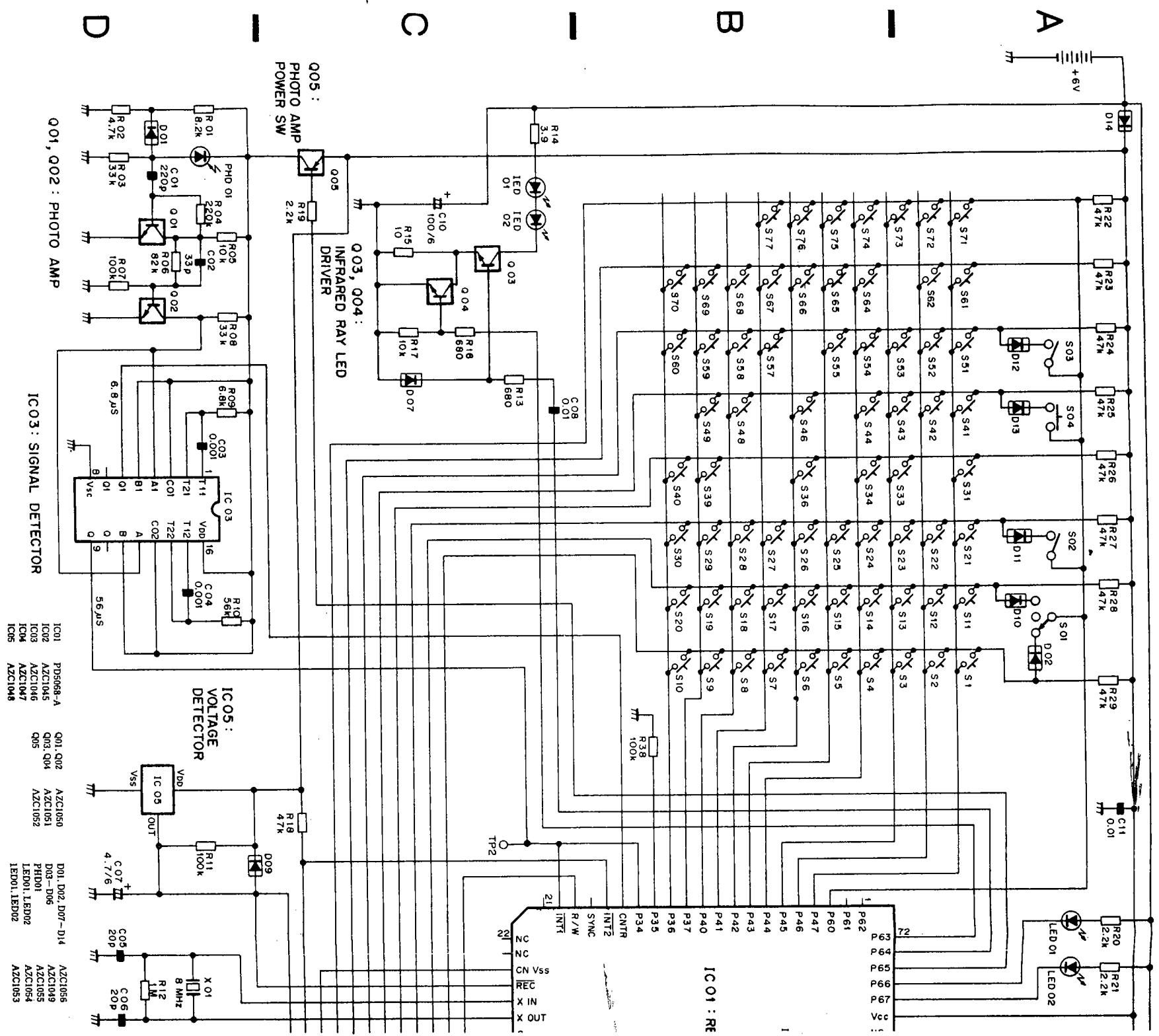
SWITCH

Mark	Symbol & Description	Part No.
S01	Slide switch (AUDIO/VIDEO/AUX)	AZC1079
S02, S03	Slide switch (USE/LEARN, DAT/TAPE)	AZC1080
S04	Tact switch (RESET)	AZC1081

CAPACITORS

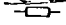


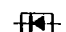
Mark	Symbol & Description	Part No.
C01	(200P)	AZC1058
C02	(33P)	AZC1059
C03, C04	(0.001μF)	AZC1062
C05, C06	(20P)	AZC1080
C07	Electrolytic capacitor (4.7/6V)	CEAS4R7M6
C08	(0.01)	AZC1061
C09	Electrolytic capacitor (100 /8V)	CEAS101M6
C10	Electrolytic capacitor (100/6V)	CEAS101M6
C11	(0.01)	AZC1063

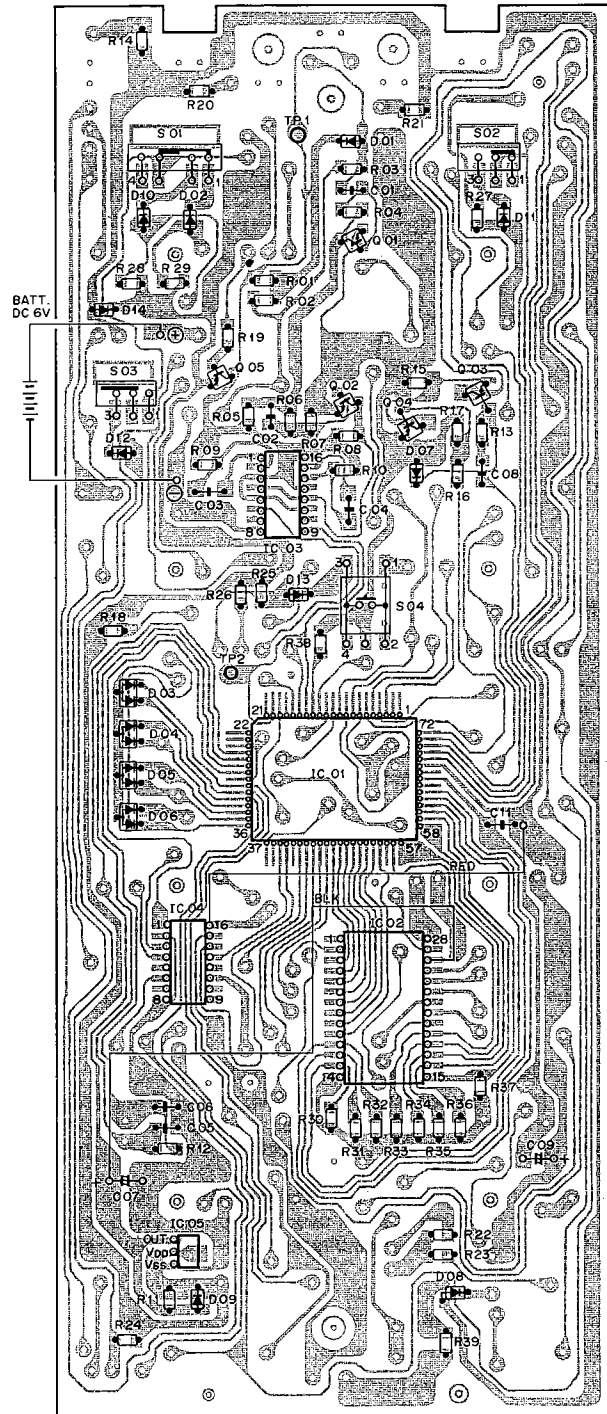
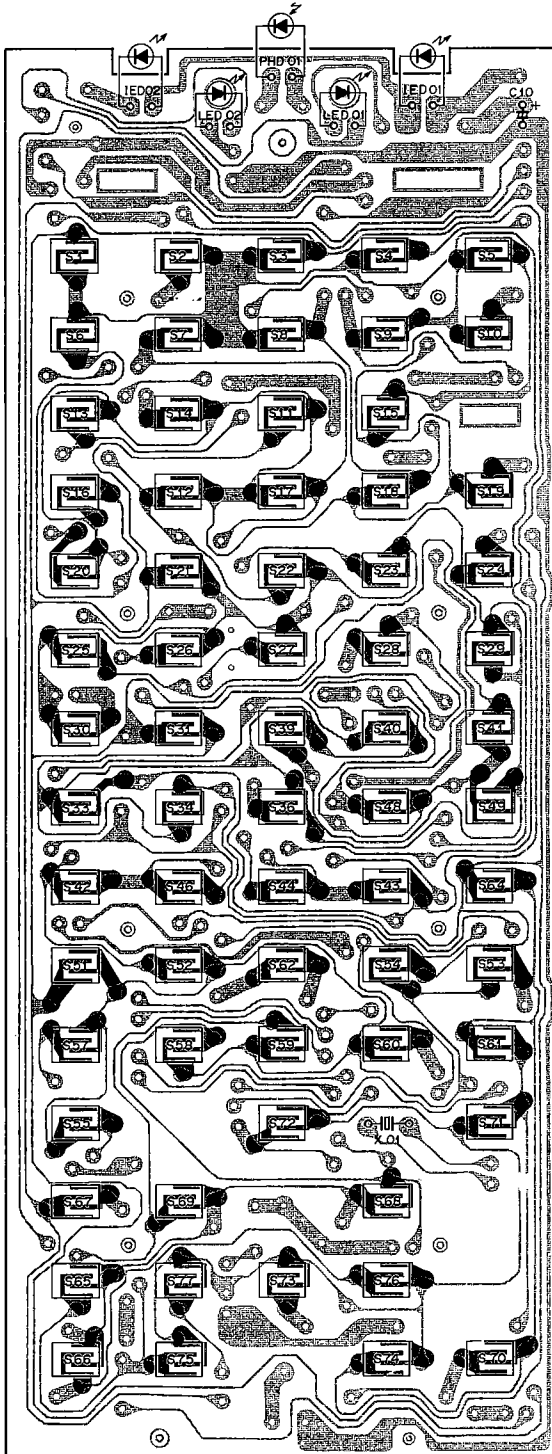
7.3 SCHEMATIC DIAGRAM



7.4 P.C.BOARD PATTERNS

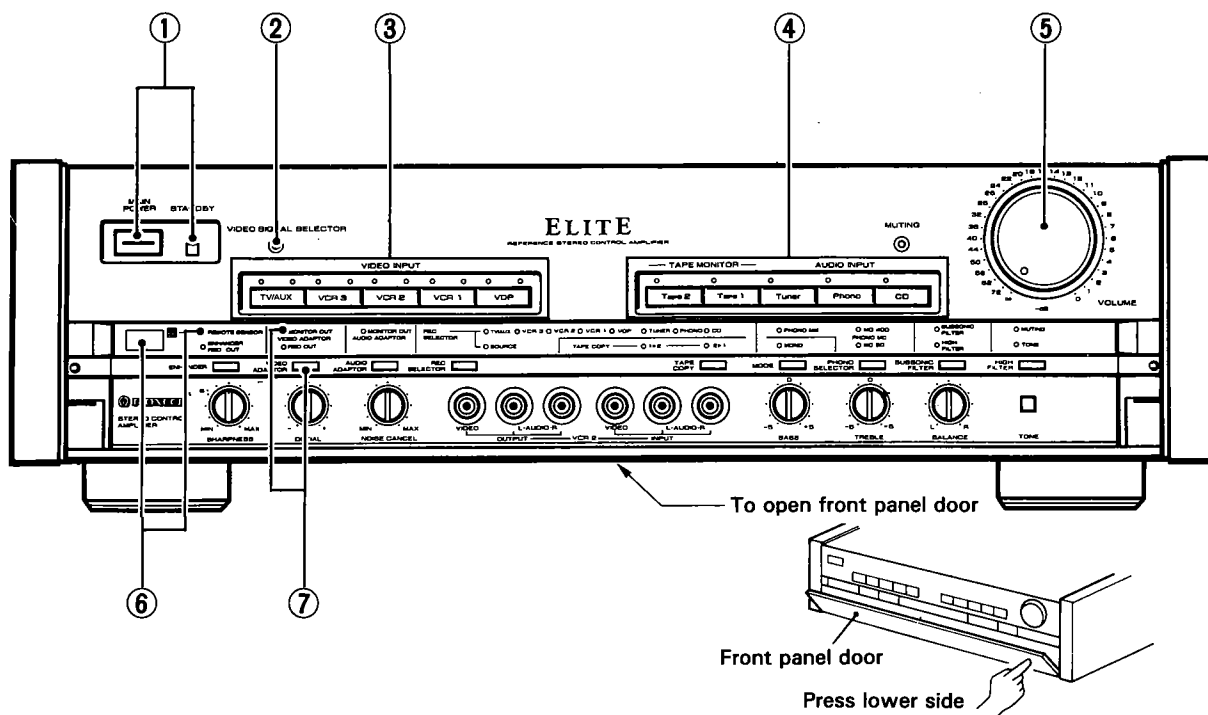
NOTE:

-  : Indicates a chip resistor.
-  : Indicates a chip capacitor.
-  : Indicates a chip transistor.
-  : Indicates a chip diode.



8. PANEL FACILITIES

FRONT PANEL



① MAIN POWER switch

STANDBY switch/indicator

- When the power switch is in the ON position, power can be turned ON/OFF to the amplifier and to the rear panel REMOTE CONTROL power outlets.
- Power is turned ON/OFF alternately with each press of the switch; when in the OFF (stand-by) position, the indicator will light (when in the ON position, the indicator will flash, then go out).
- The accessory remote control unit can be used to turn this switch ON/OFF, with the result that the remote control unit can be used from the listening position to control power not only to the amplifier, but also to those components connected to the rear panel REMOTE CONTROL power outlets.
- When not using the amplifier for an extended period of time, be sure to set the main power switch to the OFF position.

② VIDEO SIGNAL SELECTOR switch

Use to switch the video component's video signal regardless of the position of the input selector switch. The video indicators (green) above the input selector switch will light in order.

Even when listening to an audio component (record player, tuner, etc.), this switch can be used to perform video recording and playback while continuing to listen to the audio component playback.

③ VIDEO INPUT selector switches/indicators

Use to select the video component for playback.

- [VDP] — To play back the video disc player connected to the rear panel VDP terminals.
- [VCR1] — To play back the VCR connected to the rear panel VCR1 terminals.
- [VCR2] — To play back the VCR connected to the front panel VCR2 terminals.

[VCR3] — To play back the VCR connected to the rear panel VCR3 terminals.

[TV/AUX] — To use the TV tuner or video equipment connected to the rear panel TV/AUX terminals.

The red indication light during audio playback, while the green indicators light during video playback.

This switch is interlocked with the AUDIO INPUT selector.

④ AUDIO INPUT selector switches/indicators

Use to select the audio component for playback (the indicator will light).

[CD]: For compact disc player.

[Phono]: For turntable.

[Tuner]: For listening to FM/AM broadcasts with a tuner.

[Tape 1]: To use the tape deck connected to the rear panel Tape 1 terminals.

[Tape 2]: To use the tape deck connected to the rear panel Tape 2 terminals.

The Tape 1 and 2 switches go ON or OFF alternately each time they are pressed, independently of the other switches.

⑤ VOLUME control

Use to adjust the sound volume. At the [∞] position, sound will not be heard, while at the [0] position, sound volume will be at its maximum.

⑥ REMOTE SENSOR/indicators

⑦ VIDEO ADAPTOR switch/indicator

Set to the ON position when using the component connected to the rear panel ADAPTOR terminals VIDEO IN and OUT.