

Q



Service Manual

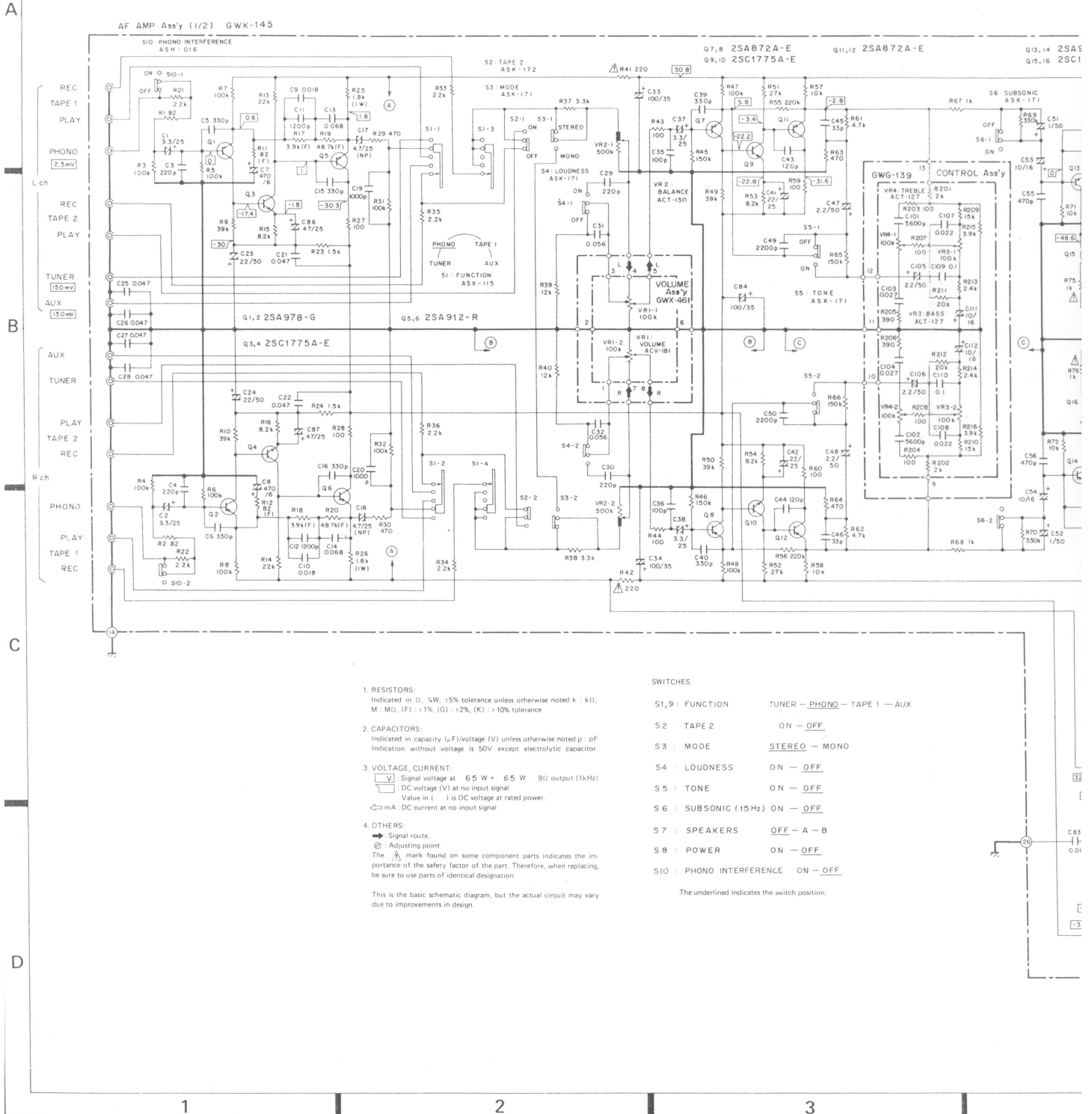
STEREO AMPLIFIER

SA-710

 **PIONEER**



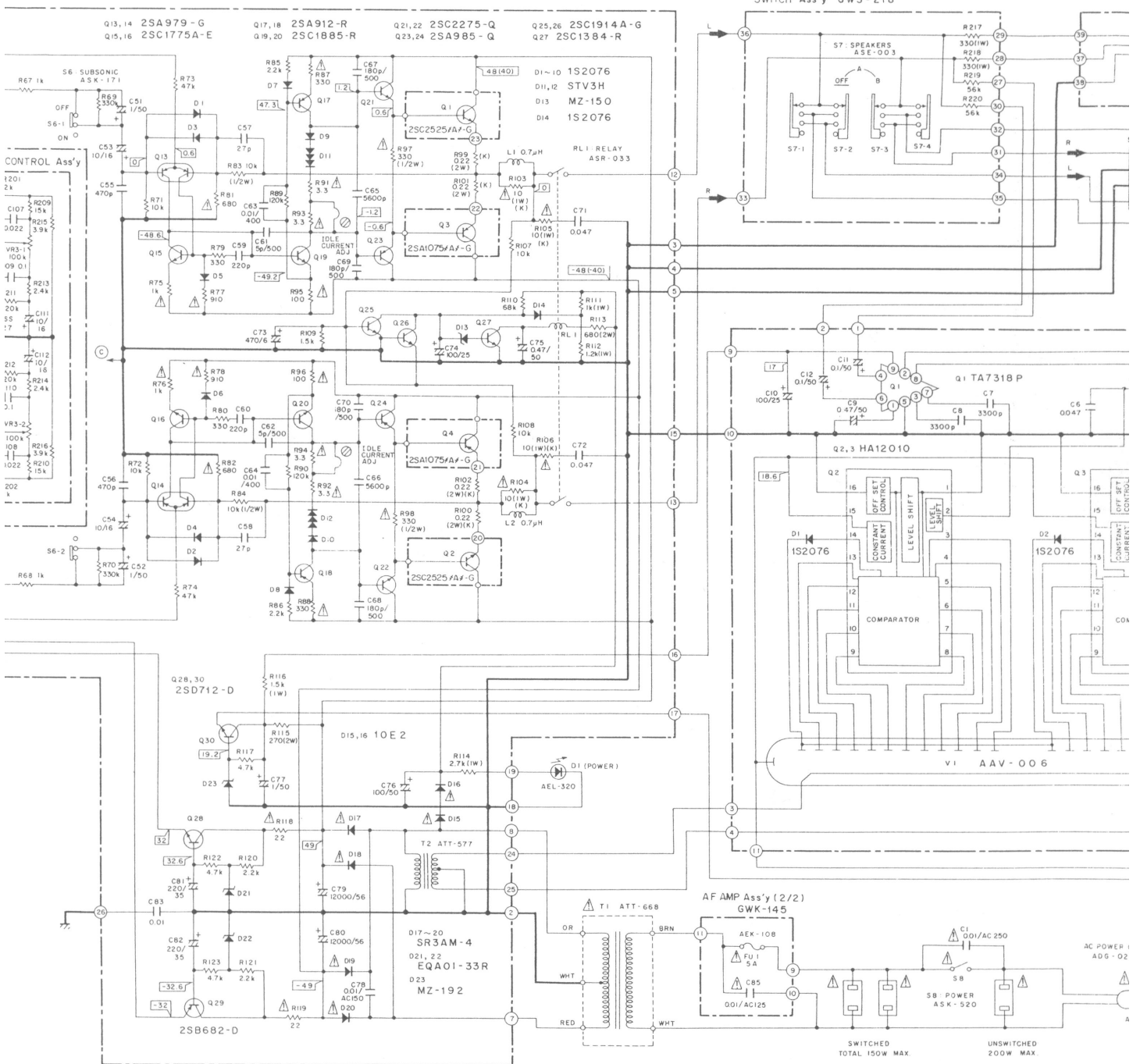
10.2 SCHEMATIC DIAGRAM



- 1. RESISTORS:**
 Indicated in Ω, kΩ, 5% tolerance unless otherwise noted k : kΩ, M : MΩ, (F) : 1%, (G) : 2%, (K) : 10% tolerance
- 2. CAPACITORS:**
 Indicated in capacity (pF)/voltage (V) unless otherwise noted p : pF
 Indication without voltage is 50V except electrolytic capacitor.
- 3. VOLTAGE, CURRENT:**
 Signal voltage at 6.5 W + 6.5 W 8Ω output (1kHz)
 DC voltage (V) at no input signal
 Value in I : I is DC voltage at rated power.
 mA : DC current at no input signal
- 4. OTHERS:**
 Signal route.
 Adjusting point.
 The mark found on some component parts indicates the importance of the safety factor of the part. Therefore, when replacing, be sure to use parts of identical designation.
- This is the basic schematic diagram, but the actual circuit may vary due to improvements in design.

- SWITCHES:**
- | | |
|--------------------------|------------------------------|
| S1,9 : FUNCTION | TUNER - PHONO - TAPE 1 - AUX |
| S2 : TAPE 2 | ON - OFF |
| S3 : MODE | STEREO - MONO |
| S4 : LOUDNESS | ON - OFF |
| S5 : TONE | ON - OFF |
| S6 : SUBSONIC (15Hz) | ON - OFF |
| S7 : SPEAKERS | OFF - A - B |
| S8 : POWER | ON - OFF |
| S10 : PHONO INTERFERENCE | ON - OFF |
- The underlined indicates the switch position.

52
E
3



External Appearance of Transistors and ICs

