

AKAI®

STEREO TAPE DECK GX-260D

UNAPPROACHABLE!

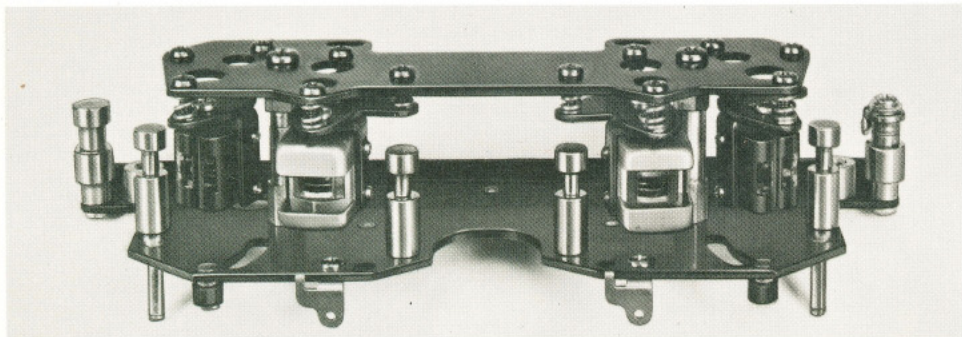
The GX-260D is the result of an extensive study to produce the best all-round tape deck possible within a reasonable price range. A complete success, the GX-260D features Akai's world prized GX Heads for reverse recording and playback, and a unique center capstan drive system for friction-free tape travel and reduced wow and flutter. Put the GX-260D to any test you like. You'll find that it is completely unapproachable by any other make or model.



4 SYMMETRICALLY POSITIONED GX HEADS

...and a 3-motor center capstan drive system add up to ideal recording

This new tape deck features four of Akai's incomparable GX (glass & single crystal ferrite) heads with the function of six. A combination GX recording/erase, and a playback head each for both forward and reverse recording and playback adds up to a new era of high fidelity sound.



The core of these GX heads is comprised of a single crystallized element "single crystal ferrite" which under exhaustive and gruelling tests proved far superior to poly-ferrite in that there are no composite particles to eventually separate and cause head gap damage. When Akai engineers discovered the unique quality of this material, they then, through a special process, reduced the noise peculiar to ferrite to an inaudible level, and the perfect head core was born!

This core, with jewel-like precision, is mounted and set in pure glass of the same hardness characteristics so that dust does not adhere to the head surface and wear-free new head performance is maintained.

Normally, such a feat would be sufficient reason to boast complete satisfaction, but Akai engineers are hard to please. They still wanted to produce a head which would provide a wider than ordinary dynamic range and better high range frequency characteristics, and, due to the superior characteristics of the head materials, they were able to obtain an ideal surface shape for perfect head-to-tape contact as well as to obtain a shallow gap depth for focusing the magnetic field into a sharp oblong radius. This focused-field system minimizes high frequency loss, eliminates undue equalization, and achieves a wider dynamic range. This amazing feature together with high quality general engineering and the use of low noise tape enables the GX-260D to exhibit an unbelievable distortionless high frequency range to 26,000Hz and a signal-to-noise ratio of 57 dB.

AUTOMATIC OR MANUAL REVERSE RECORDING & PLAYBACK SYSTEM

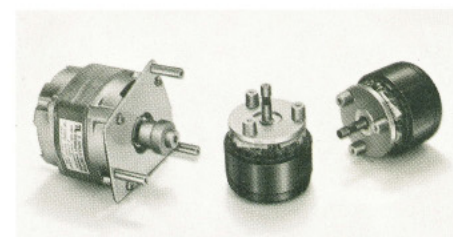
The GX-260D features reverse recording and playback for the complete elimination of inverting reels by hand. Record or playback the forward tracks of the magnetic tape and then reverse the machine to continue recording or playing back the remaining two tracks.

Through the simple application of sensing foil to the magnetic tape and adjustment of the Automatic Reverse Mode Selector Switch, continuous reverse between two points or a single reversing cycle can be accomplished. After sensing tape has been applied to the magnetic tape, simply set this switch to CONT REV (continuous reverse), REV (one reverse cycle), or NON REV (forward only). This system does away with the trouble of removing the sensing foil depending upon desired operation.

3 MOTOR DRIVE MECHANISM FOR STABLE TAPE TRAVEL.

This model employs Akai's unique and extravagant self-lubricating type capstan drive motor used only in highest quality machines. Two cellulose fiber oil retainers also serve as filters, providing uninterrupted oil circulation and ensuring smooth shaft rotation; i.e., unlike other self-lubricating systems, the relative flow of oil depends upon motor revolutions and temperature. Fluctuation of motor revolutions caused by friction is also eliminated for further strengthening the long-lasting characteristics of the outstanding GX head.

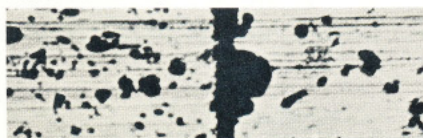
Further, two outstanding eddy-current outer-rotor reel drive motors are employed to eliminate tape stretch, assuring smooth tape travel with optimum tape tension and ideal starting torque.



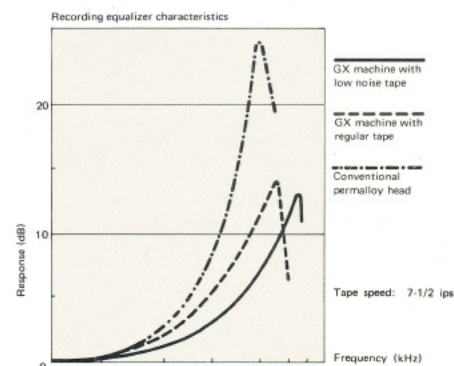
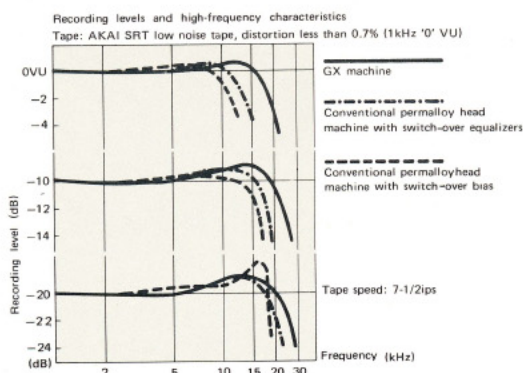
Gap environs of Single Crystal Ferrite Head



Gap environs of Poly-Ferrite Head



* After equal use/Enlarged to 800 times actual size



HEADS FUNCTION AS 6

g & playback characteristics.

CENTER CAPSTAN DRIVE SYSTEM GUARANTEES IDENTICAL PERFORMANCE IN BOTH DIRECTIONS.

One of the principal features of this model is the uniquely designed center capstan drive system. The arrangement of the head block is completely symmetrical in relation to the center capstan. Tape guides, tape lifters, and even the heads are in identical relative positions. This 3-motor center capstan drive system, plus combined recording/erase heads for a short tape path within the head block, assures smooth, friction-free tape travel and drastically reduces wow and flutter to 0.06%. Further, the equi-distant short tape path between the heads and the take-up or supply reel on both sides and equal tape tension guarantees perfectly identical performance in both directions. Also as the heads are stationary, head alignment is never a problem.

LINE OUTPUT LEVEL CONTROL ENABLES PERFECT OUTPUT ADJUSTMENT ACCORDING TO AMPLIFIER INPUT.

This model is equipped with a convenient line output level control. This feature facilitates easy connection with any external amplifier. Simply adjust output level according to amplifier input. Variable from 0V to 1.23V.

ECHO EFFECT ADDS TO RECORDING PLEASURE.

For versatile performance, depress the S.O.S. button during recording to add a reverberation effect to the recording. When the tape is played back, an echo effect is emitted from the speakers. Interesting and entertaining!

SOUND-ON-SOUND RECORDING PERMITS ACCUMULATION OF AS MANY INDIVIDUAL RECORDINGS ON A SINGLE TRACK AS IS DESIRED.

For instance, record on track 1 and rewind tape. While monitoring the first recording through headphones, record on track 3. Both recordings will merge on track 3. This process can be repeated as many times as is desired by simply switching the recording safety buttons. Convenient for fun or professional use.

SIGNALS FROM LINE AND MICROPHONE CAN BE RECORDED SIMULTANEOUSLY.

Another important feature of this model is the built-in microphone-line circuit. Independent line and microphone recording level controls and input jacks enable signals from microphone and signals from other sources to be blended and recorded simultaneously on the tape. Just imagine recording your own voice accompanied by your favorite orchestra.

TAPE SELECTOR SWITCH FOR ENHANCING PERFORMANCE OF LOW NOISE TAPE.

A tape selector switch facilitates the use of Akai's S.R.T tape or other make low noise tape. Setting this switch to ON position brings out the maximum response of low noise tape. The S.R.T circuit works to change the recording equalization according to the tape. Eventhough the GX-260D displays a super high frequency response with ordinary magnetic tape, this is extended to cover an amazing 26,000Hz with low noise tape.

SOUND-WITH-SOUND RECORDING FOR EASIER LANGUAGE TRAINING

Sound-with-sound is a convenient feature for language training. Record your instructor's voice on track 1 and rewind tape. While monitoring the first recording, record on track 3. Then playback the tape and compare. Erase your voice and record again until perfection is attained.

DUAL MONITORING PERMITS COMPARISON OF SOURCE AND RECORDED SIGNAL.

Individual source and tape monitor switches enable instant comparison of signal input and the actual recording being made. This ability to determine recording quality as the recording is being made results in truly professional operation.

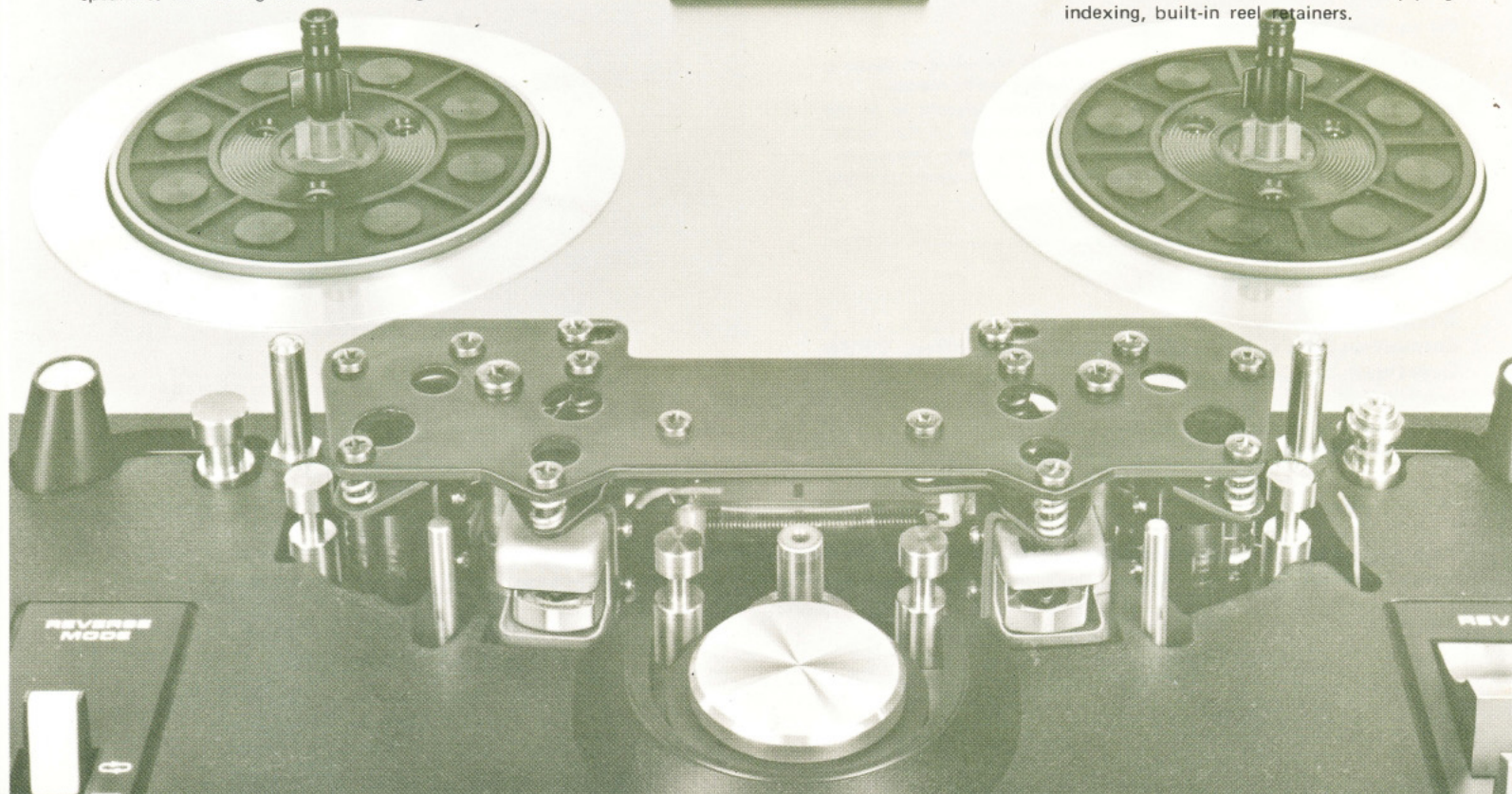
REEL MOVEMENT STOPS AUTOMATICALLY AT END OF TAPE.

This unit employs a convenient automatic stop mechanism which stops reel movement at the end of the tape. Complete peace of mind should the unit temporarily be left unattended!

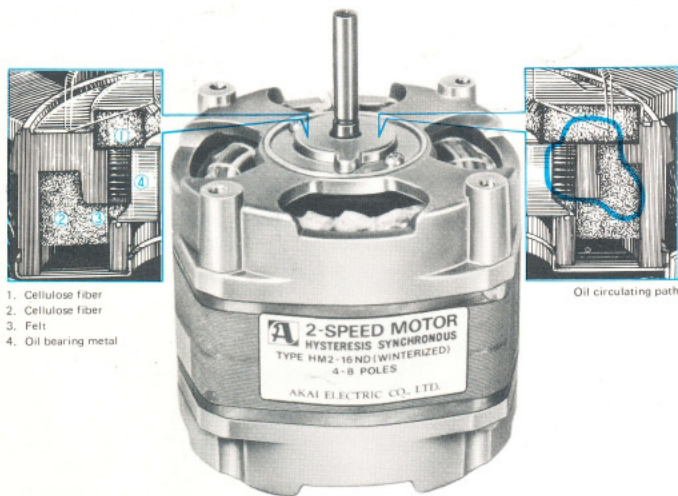
STEP-TYPE INPUT LEVEL CONTROLS

New step-type input level controls enable easier and more precise input level adjustment. No more sudden bursts of input volume to annoy the listener. Adjustment is gradual and even.

OTHER FEATURES include extra unswitched A.C. outlet for connection of an external unit, index counter for easy program indexing, built-in reel retainers.



OIL CIRCULATING SELF-LUBRICATING MOTOR ... complements GX Head performance.



Epoch-making longevity!!

For watches and car engines, oil circulating self-lubricating motors are more practical ... and for audio motors as well.

To date, on constantly used machines, oiling was necessary every six months. However, Akai's new self-lubricating motor completely banishes this bother. A motor capable of 10,000 hours of operation without oiling has become a reality! Further, the oil does not become dirty and there is no oil efflux. Devised for smooth non-varying revolutions and tested for actual proof of phenomenal longevity, this extraordinary motor also enhances the permanent characteristics of the GX Head, and fresh new sound is now your to enjoy henceforth.

Two separately installed oil circulating mechanisms.

The secret of this Akai-developed long-lasting self-lubricating motor is the installation of two oil circulating mechanisms with cellulose fibers within the motor's interior. While the oil is circulating, shaft revolutions are always smooth and stable. Oil circulating speed is naturally adjusted according to motor revolutions and temperature, and because the system is neither electrically or mechanically operated, trouble resulting from oil circulating suspension does not occur.

Oil purified in cleaning process.

Unique cellulose fibers filter out the dirt while the oil is circulating resulting in spotless oil for improved and lasting performance.

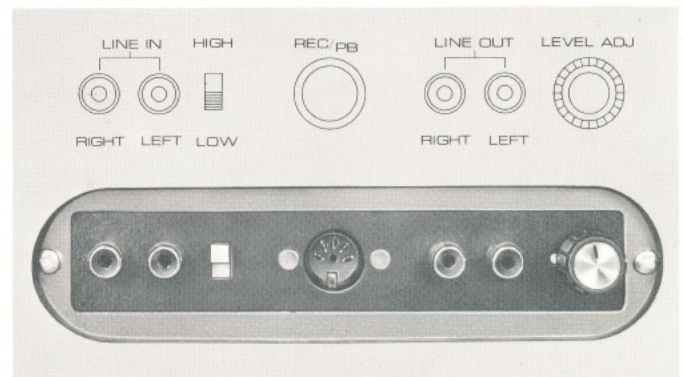
So important is the motor, that it is sometimes referred to as the "heart" of a tape recorder. The superior capabilities of this motor are not just first stage capabilities, but are completely maintained. Thus, genuine appeal of new machine stereo sound is yours to enjoy permanently.

STANDARD ACCESSORIES

Empty Reel	1
Connection Cord	(3-core areas: 1 DIN; others: 2 PIN)
Dust Cover	1
Sensing Foil	1
Spare Fuses	1 set
Operator's Manual	1

TECHNICAL DATA

Track System	4-track 2-channel stereo/monaural system
Reel Capacity	Up to 7' reel
Tape Speed	7-1/2 and 3-3/4ips (±1%)
Wow & Flutter	Less than 0.06%WRMS at 7-1/2ips Less than 0.1%WRMS at 3-3/4ips
Equalization	Correct equalization for playback of tapes recorded to the NAB curve
Frequency Response ...	Using low noise tape 30Hz to 26,000Hz (±3dB) at 7-1/2ips 30Hz to 20,000Hz (±3dB) at 3-3/4ips Using regular tape 30Hz to 23,000Hz (±3dB) at 7-1/2ips 30Hz to 18,000Hz (±3dB) at 3-3/4ips
Distortion	Less than 1.2% (1,000Hz zero VU)
Signal-To-Noise Ratio...	Better than 57dB (Tape Selector Circuit activated) Better than 54dB (Tape Selector Circuit inactivated)
Cross-Talk	Better than 60dB (monaural) Better than 45dB (stereo)
Bias Frequency	100kHz
Heads	(4) Two GX recording/erase combination heads, two GX playback heads.
Motors	(3) One 4/8-pole self-lubricating hysteresis synchronous capstan drive motor, two eddy-current outer-rotor reel drive motors
Fast Forward & Rewind Time	Within 75 seconds using a 1,200ft tape
Recording Capacity	Two hours stereo recording using a 1,200ft tape at 3-3/4ips
Output Jacks	Line (2) : 1.23V (zero VU)/100Ω Required load impedance: more than 20kΩ Phone (1) : 30mV/8Ω
Input Jacks	Microphone (2) : 0.3mV/4.7kΩ Line (2) : 50mV
Din Jack	0.5V/25mV
Semi-Conductors	Transistors: 30 Diodes: 22
Power Requirements	100V to 240V, A.C., 50/60Hz
Power Consumption	110W max.
Dimensions	446(W) x 473(H) x 226(D)mm, (17.5 x 18.6 x 8.9")
Weight	20.8kg (45.8 lbs)



* For improvement purposes, specifications and design are subject to change without notice.

C273ADF/DIF1573

MANUFACTURED & DISTRIBUTED BY
AKAI ELECTRIC CO., LTD.
AKAI TRADING CO., LTD.

12-14, 2-chome, Higashi-Kojiya,
Ohta-ku, Tokyo, Japan
Printed in Japan