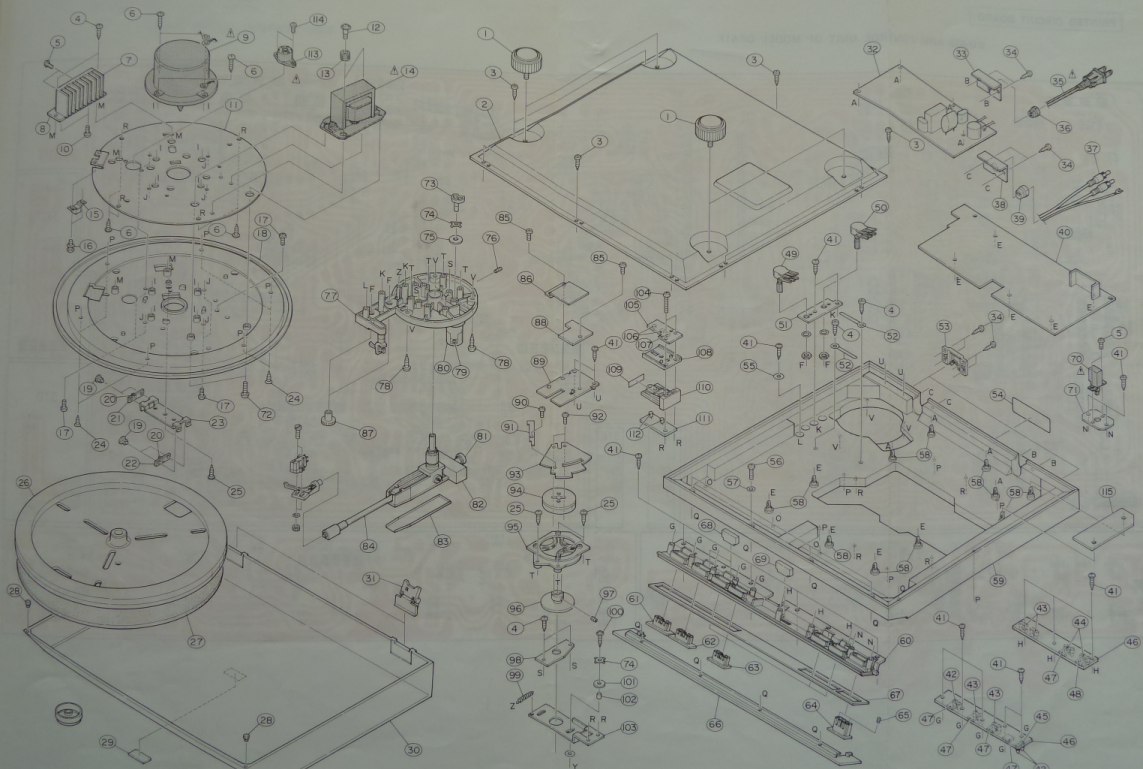


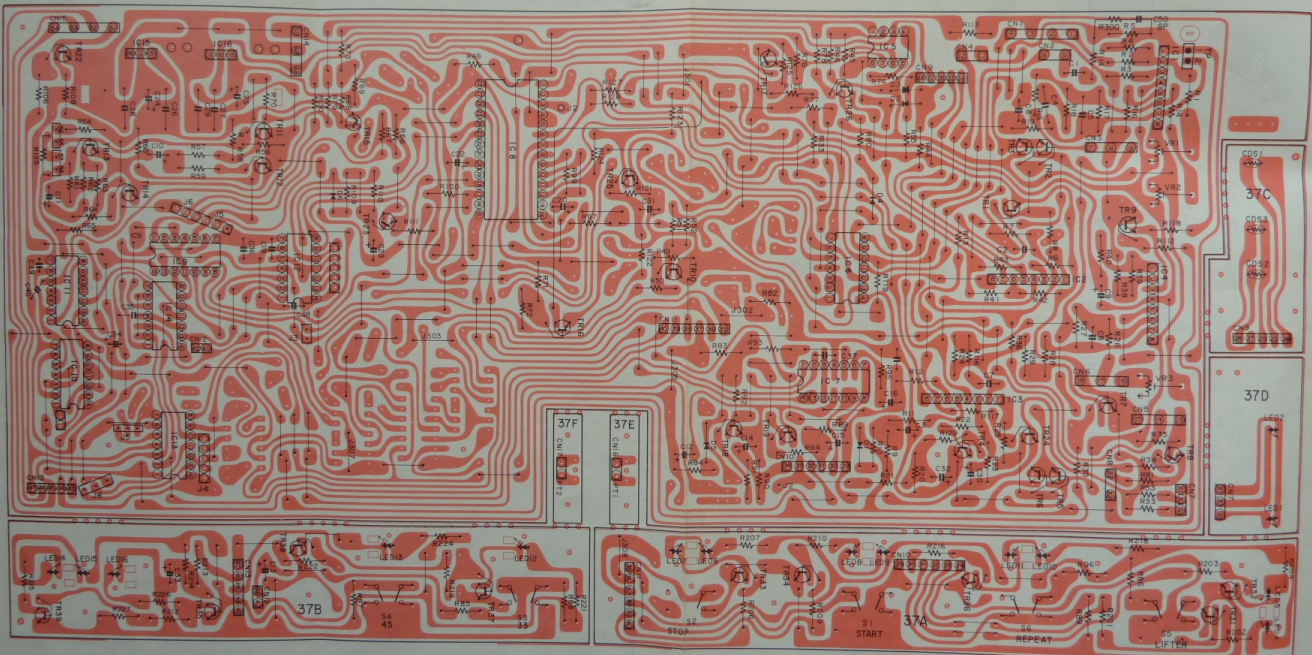
EXPLODED VIEW OF MAIN PARTS



Name	Remarks
ET	DP-51F
ET	DP-52F
SUPPORT	DP-51F
Y	EU only
Y	DP-52F only
Y	DP-52F only
PORT	EU only
ER	
R	E1 only
	E1 only
	E2, E3, E4, E5
	E6, E7

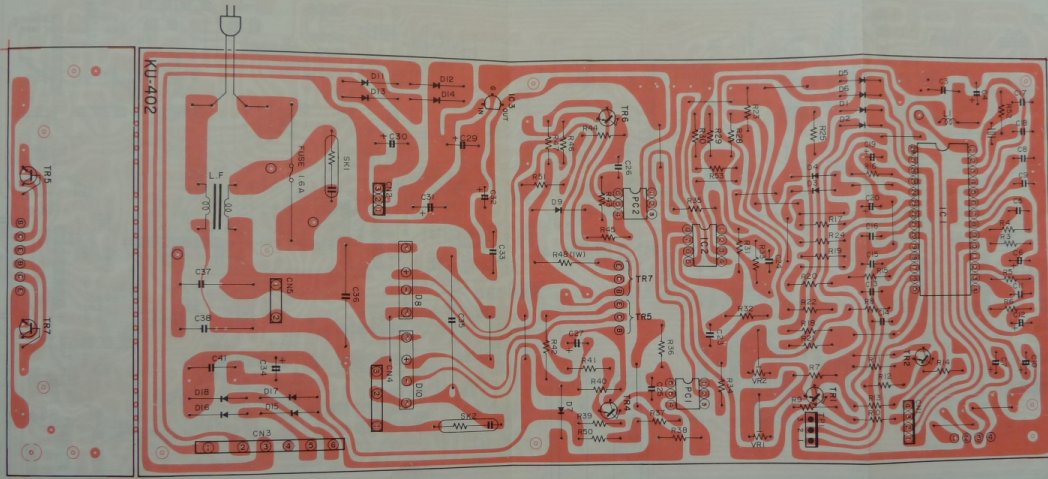
PRINTED CIRCUIT BOARD

KU-403 ARM CONTROL UNIT OF MODEL DP-51F

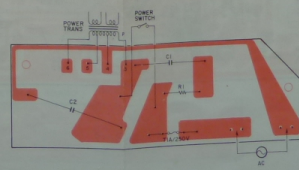


PRINTED CIRCUIT BOARD

KU-402 MOTOR CONTROL UNIT



PS-164 POWER SUPPLY P.C. BOARD UNIT

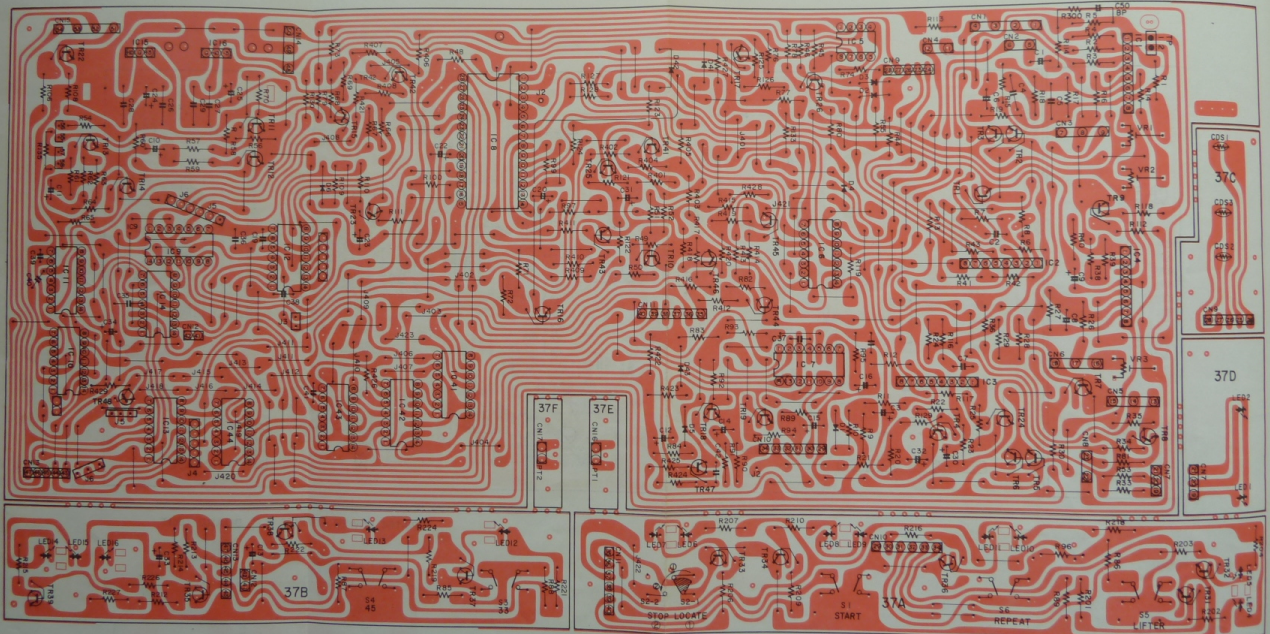


PRINTED CIRCUIT BOARD

KU-410A ARM CONTROL UNIT OF MODEL DP-52F

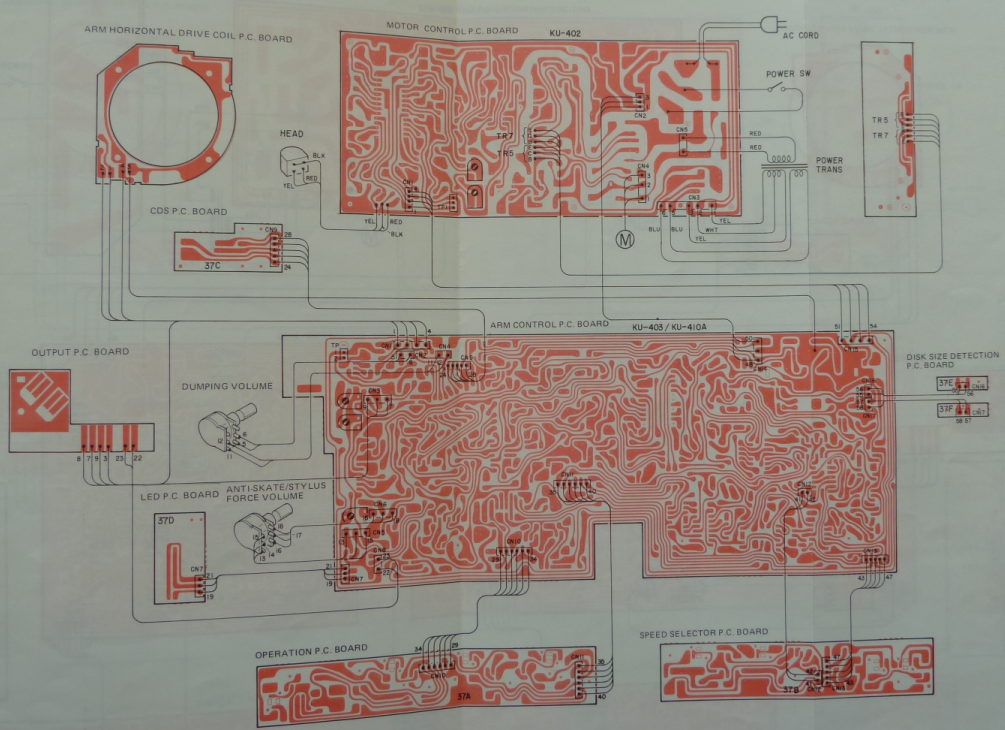
PRINTED CIRCUIT BOARD

KU-410A ARM CONTROL UNIT OF MODEL DP-52F



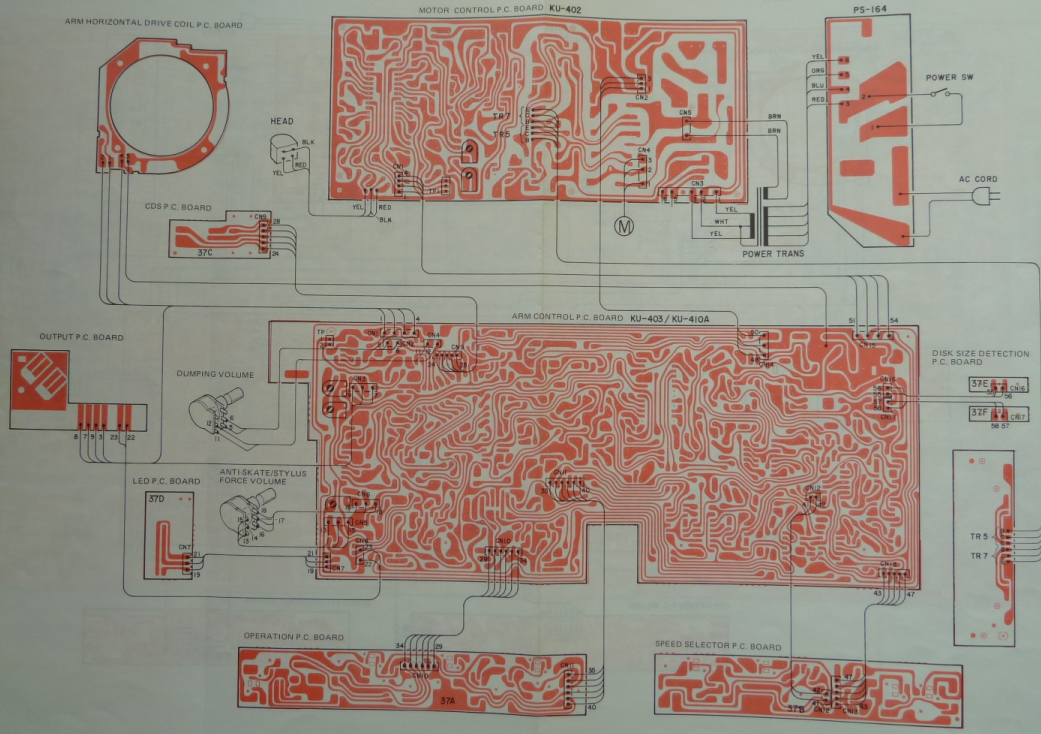
CONNECTIONS OF P.C. BOARD

(Canadian & U.S.A. Models)

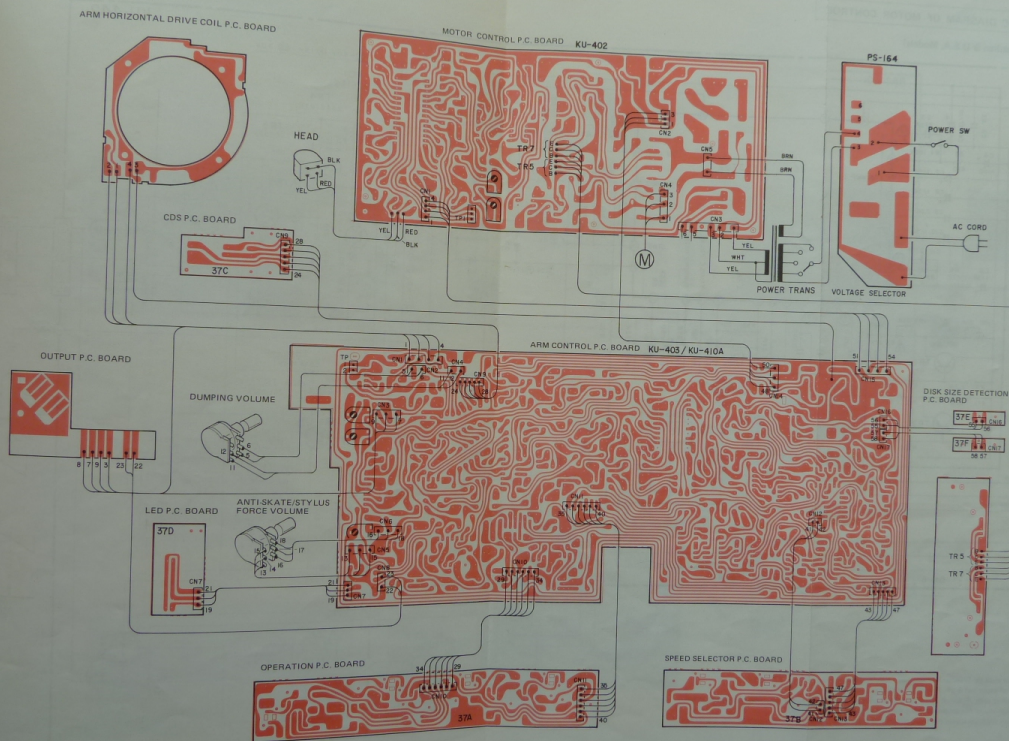


CONNECTIONS OF P.C. BOARD

(European & Australian Models)

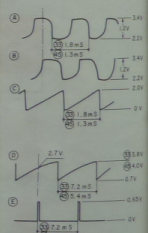
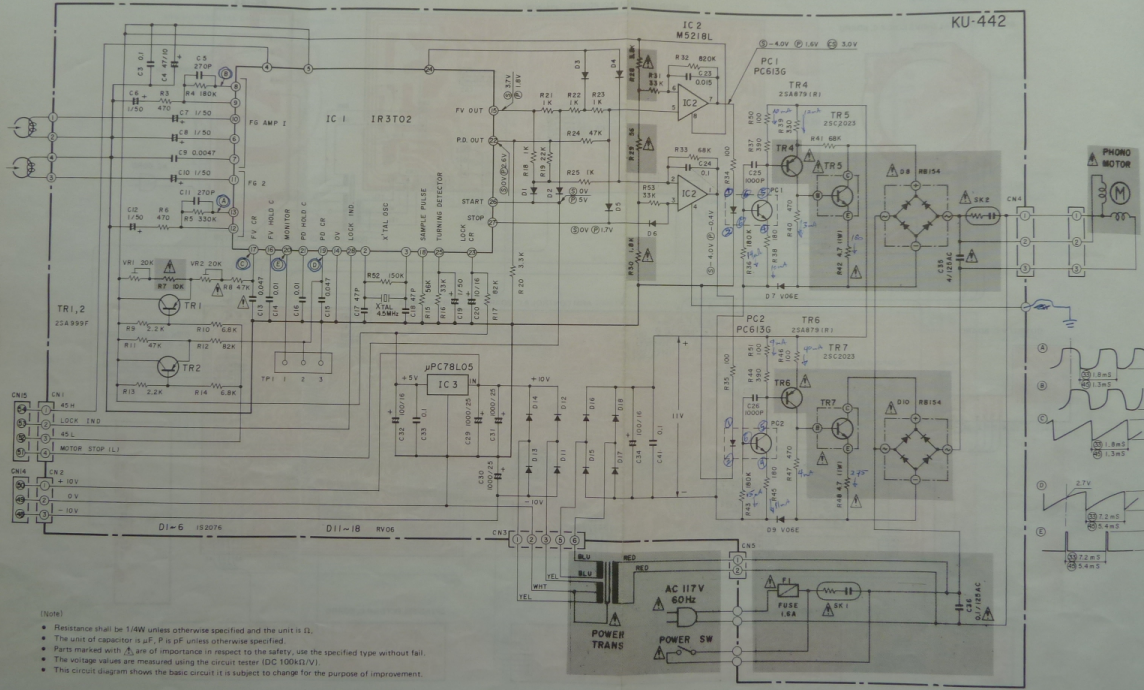


( Multi Voltage Models )



**SCHEMATIC DIAGRAM OF MOTOR CONTROL**

(Canadian & U.S.A. Models)

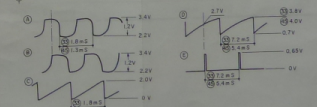
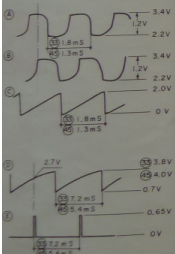
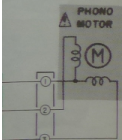
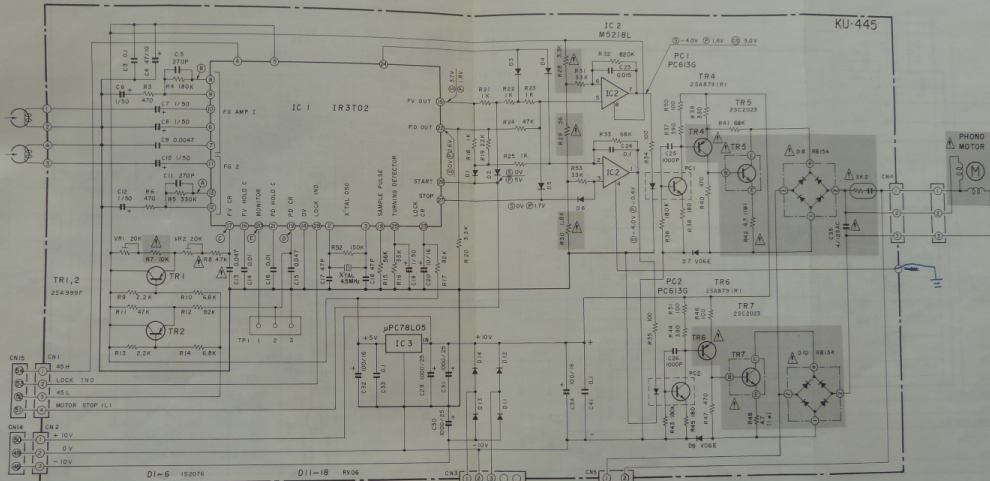


- (308)
- Resistance shall be 1/4W unless otherwise specified and the unit is Ω.
  - The unit of capacitor is µF, P is pF unless otherwise specified.
  - Parts marked with ⚡ are of importance in respect to the safety, use the specified type without fail.
  - The voltage values are measured using the circuit tester (DC 100kΩ/V).
  - This circuit diagram shows the basic circuit it is subject to change for the purpose of improvement.

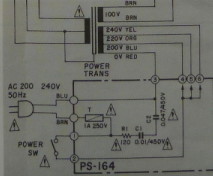


**SCHEMATIC DIAGRAM OF MOTOR CONTROL**

(European & Australian Models)



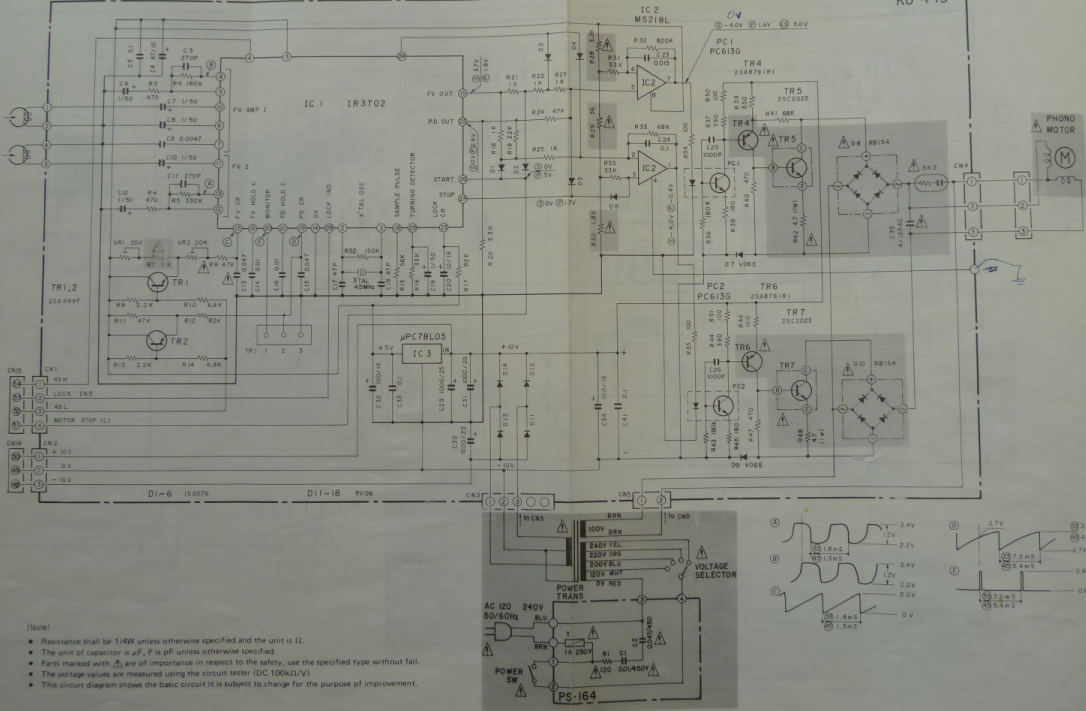
- (Note)
- Resistance shall be 1/4W unless otherwise specified and the unit is Ω.
  - The unit of capacitor is μF; P is pF unless otherwise specified.
  - Parts marked with **A** are of importance in respect to the safety, use the specified type without fail.
  - The voltage values are measured using the circuit tester (DC 100kΩ/V).
  - This circuit diagram shows the basic circuit; it is subject to change for the purpose of improvement.



**SCHEMATIC DIAGRAM OF MOTOR CONTROL**

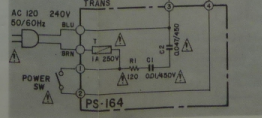
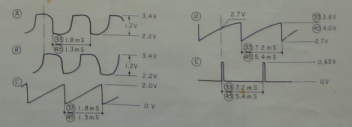
(Multi Voltage Models)

KU-445

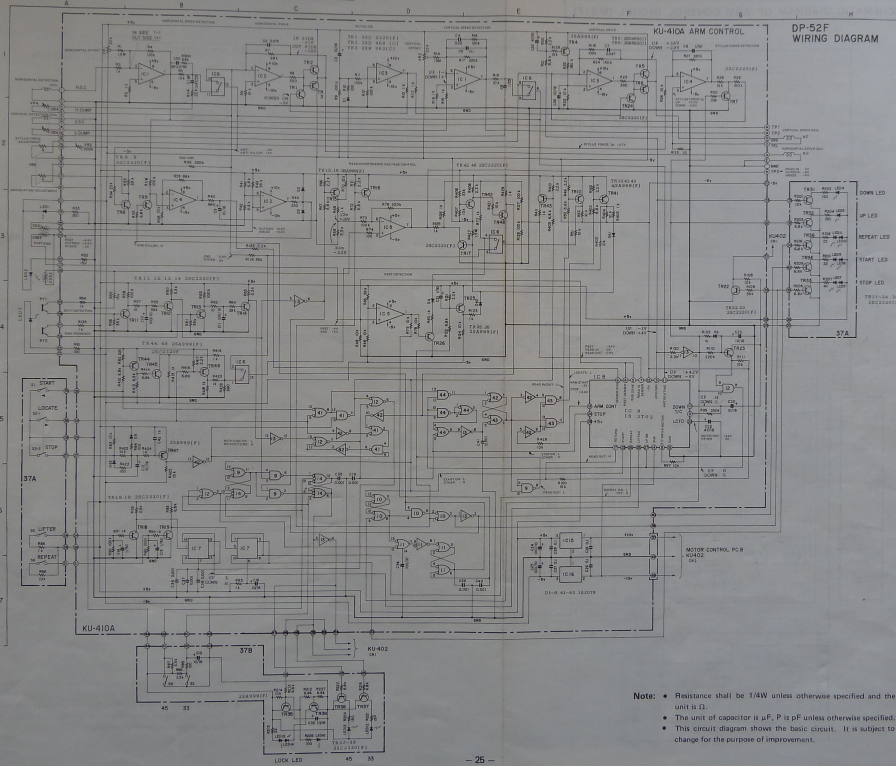


**Note:**

- Resistance shall be 1/4W unless otherwise specified and the unit is Ω.
- The unit of capacitor is µF, p is pF unless otherwise specified.
- Parts marked with  $\Delta$  are of importance in respect to the safety, use the specified type without fail.
- The voltage values are measured using the circuit tester (DC 100-1.1V).
- This circuit diagram shows the basic circuit; it is subject to change for the purpose of improvement.



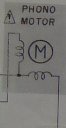
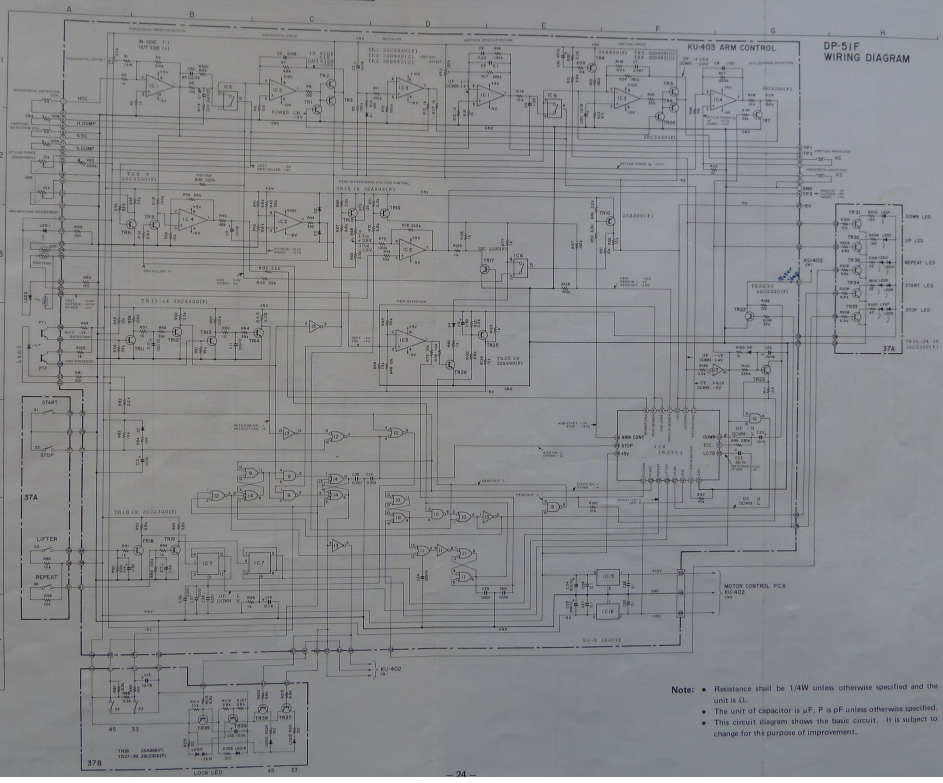
**SCHEMATIC DIAGRAM OF ARM CONTROL (MODEL DP-52F)**



**DP-52F  
WIRING DIAGRAM**

- Note:**
- Resistance shall be 1/4W unless otherwise specified and the unit is Ω.
  - The unit of capacitor is μF, P is pF unless otherwise specified.
  - This circuit diagram shows the basic circuit. It is subject to change for the purpose of improvement.

**SCHEMATIC DIAGRAM OF ARM CONTROL (MODEL DP-51F)**



3.3V  
 4.0V  
 0.7V  
 0.65V  
 0V

**Note:**

- Resistance shall be 14W unless otherwise specified and the unit is Ω.
- The unit of capacitor is μF, P is pF unless otherwise specified.
- This circuit diagram shows the basic circuit. It is subject to change for the purpose of improvement.