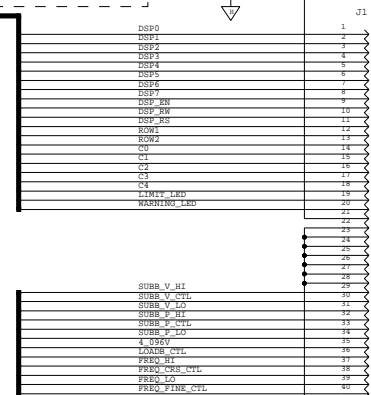
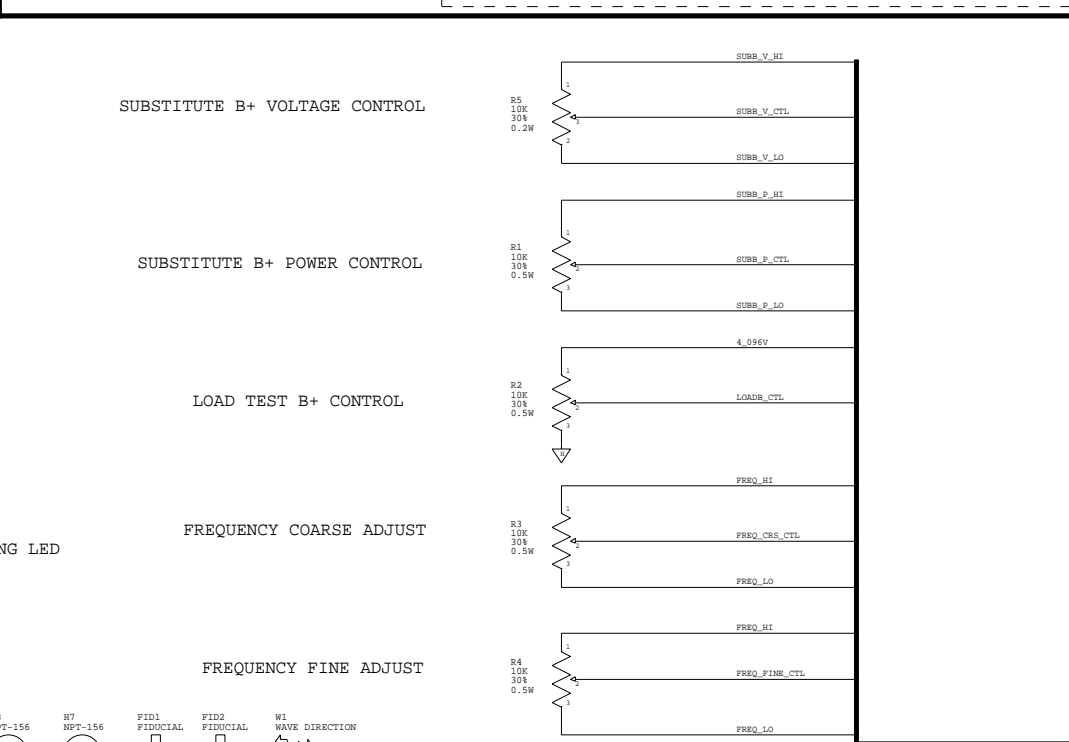
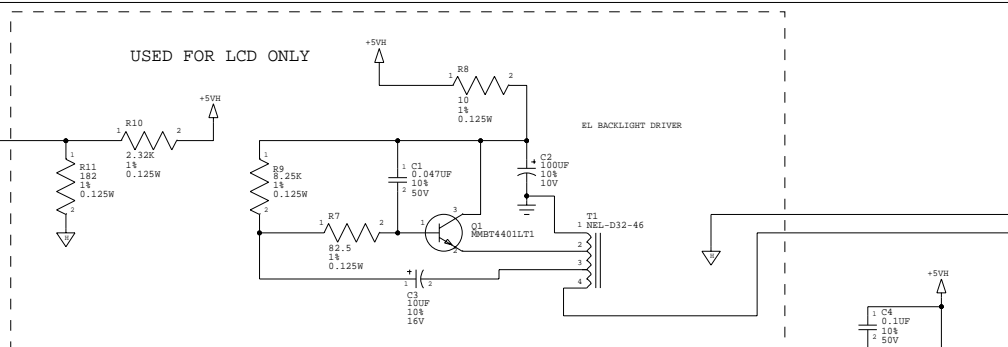
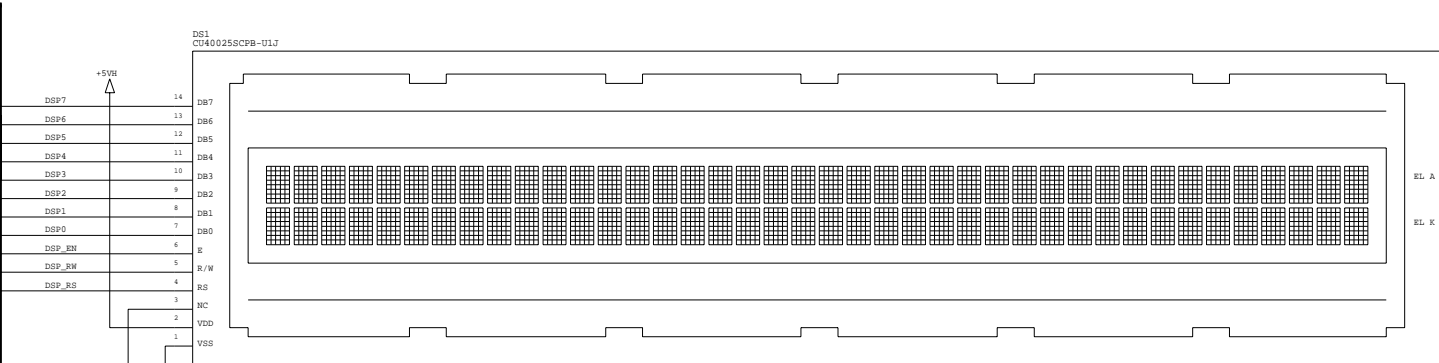
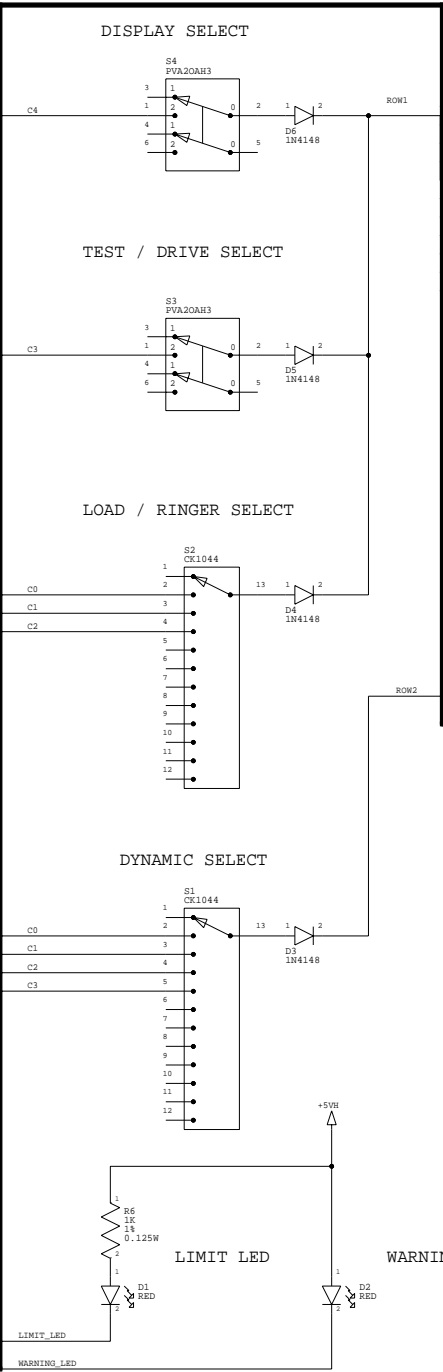


C[0:4],ROW[1:2],LIMIT_LED,WARNING_LED,DSP_RS,DSP_RW,DSP_EN,DSP[0:7]

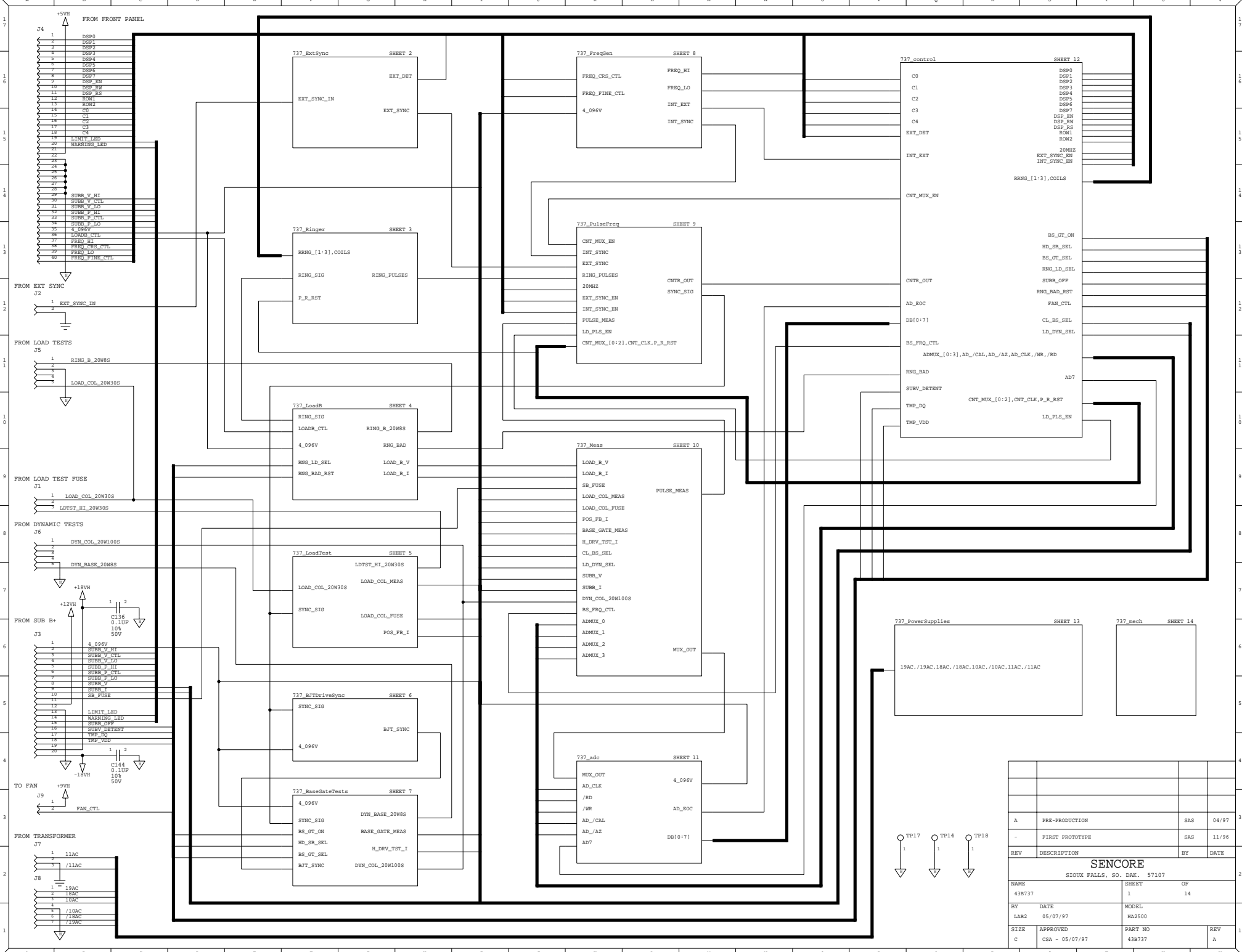


SUBB_V_HI,SUBB_V_CTL,SUBB_V_LO,SUBB_P_HI,SUBB_P_CTL,SUBB_P_LO,4.096V,LOADB_CTL,FREQ_HI,FREQ_CRS_CTL,FREQ_LO,FREQ_FINE_CTL

REV	DESCRIPTION	BY	DATE
A	PRE-PRODUCTION	SAS	04/97
-	FIRST PROTOTYPE	SAS	11/96

SENCORE
 SIOUX FALLS, SO. DAK. 57107

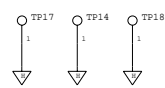
NAME 43B736	SHEET 1	OF 1
BY LAB 2	DATE 04/25/97	MODEL HA2500
SIZE C	APPROVED CSA - 04/25/97	PART NO 43B736
		REV A

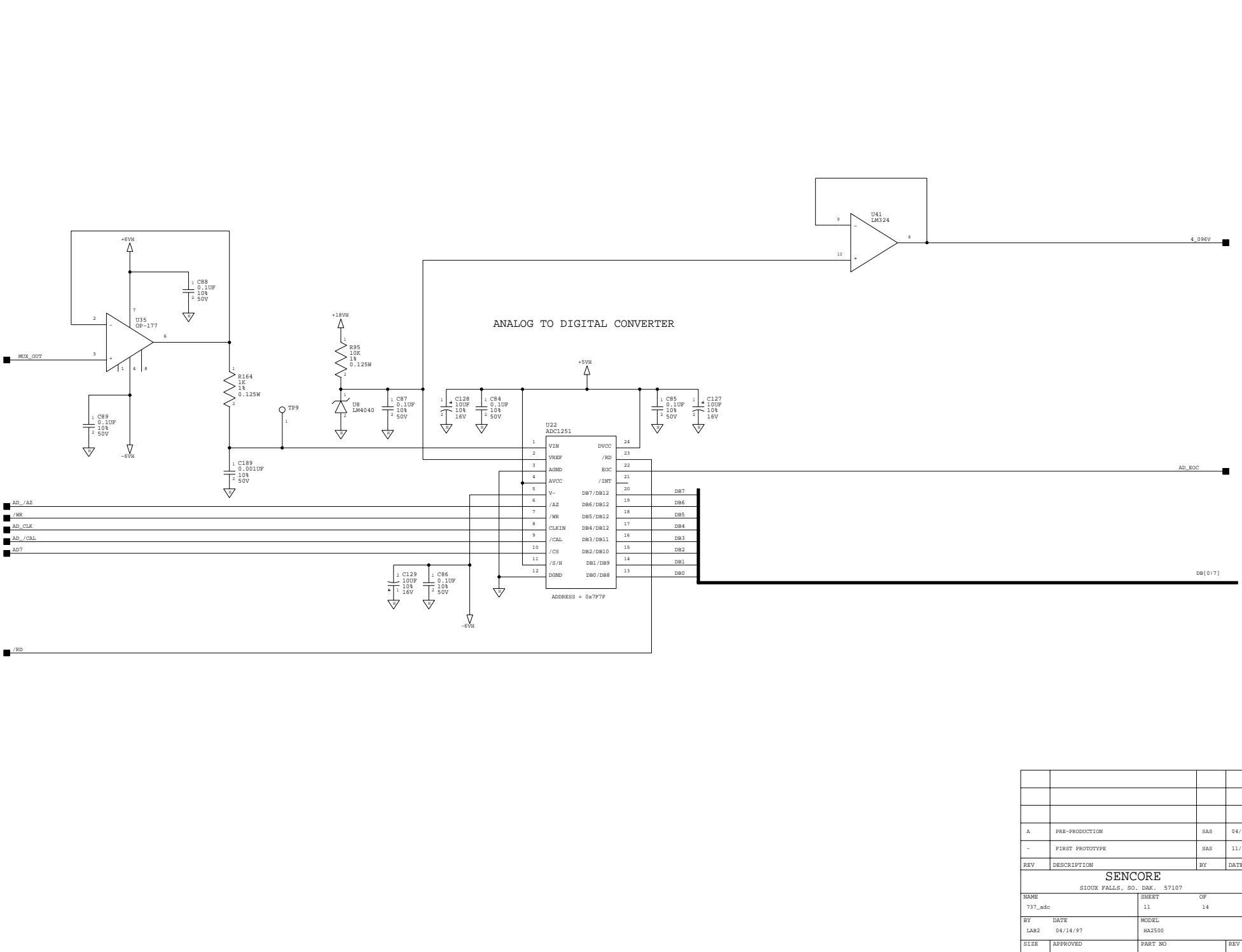


REV	DESCRIPTION	BY	DATE
A	PRE-PRODUCTION	SAS	04/97
-	FIRST PROTOTYPE	SAS	11/96

SENCORE
SIOUX FALLS, SO. DAK. 57107

NAME	43B737	SHEET	1	OF	14
BY	LAB2	DATE	05/07/97	MODEL	HA2500
SIZE	C	APPROVED	CSA - 05/07/97	PART NO	43B737
				REV NO	A





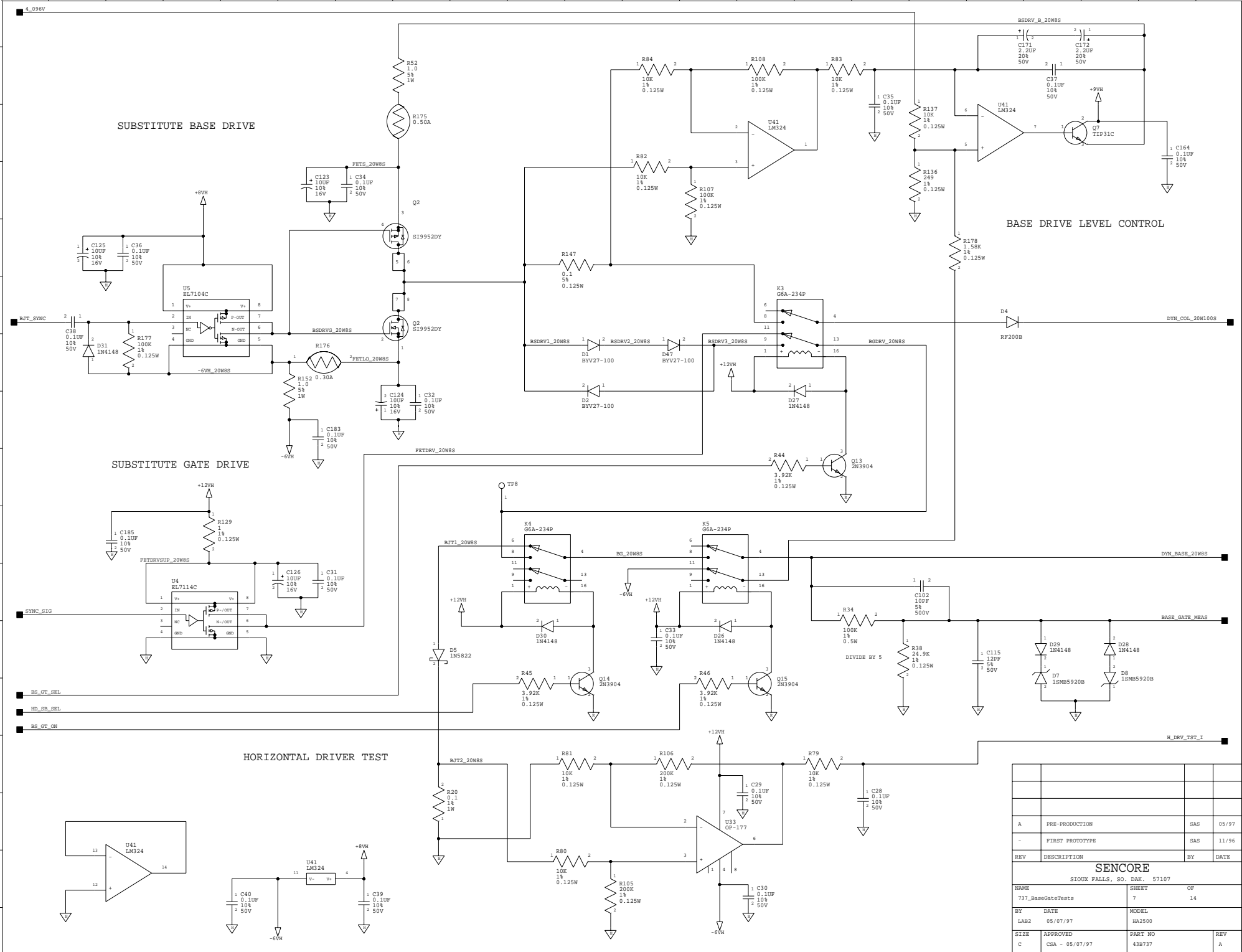
A	PRE-PRODUCTION	SAS	04/97
-	FIRST PROTOTYPE	SAS	11/96
REV	DESCRIPTION	BY	DATE
SENCORE			
SIOUX FALLS, SO. DAK. 57107			
NAME	737_adc	SHEET	OF
LAB2	04/14/97	11	14
BY	DATE	MODEL	
		HA2500	
SIZE	APPROVED	PART NO	REV
C	CSA - 05/07/97	438737	A

SUBSTITUTE BASE DRIVE

SUBSTITUTE GATE DRIVE

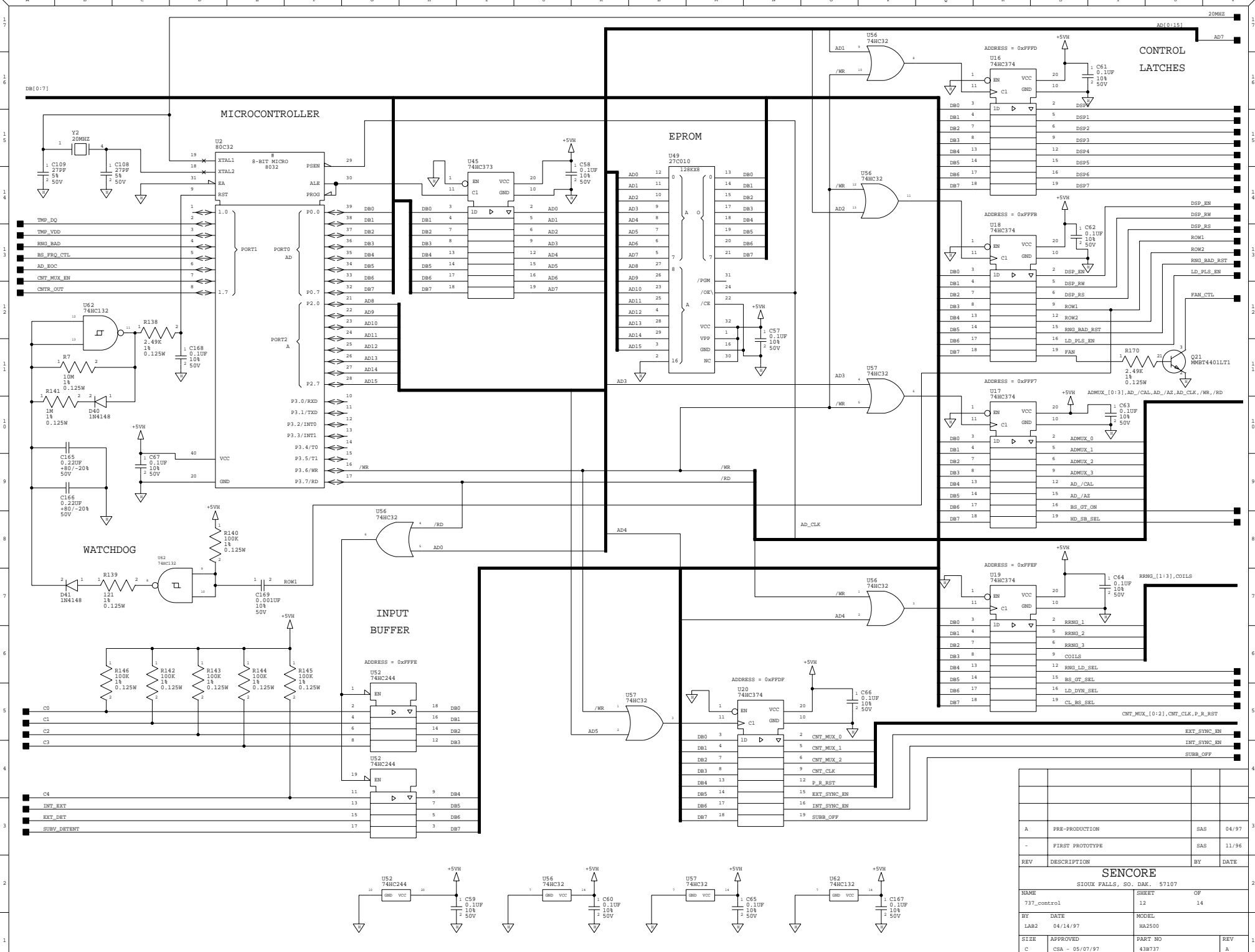
HORIZONTAL DRIVER TEST

BASE DRIVE LEVEL CONTROL

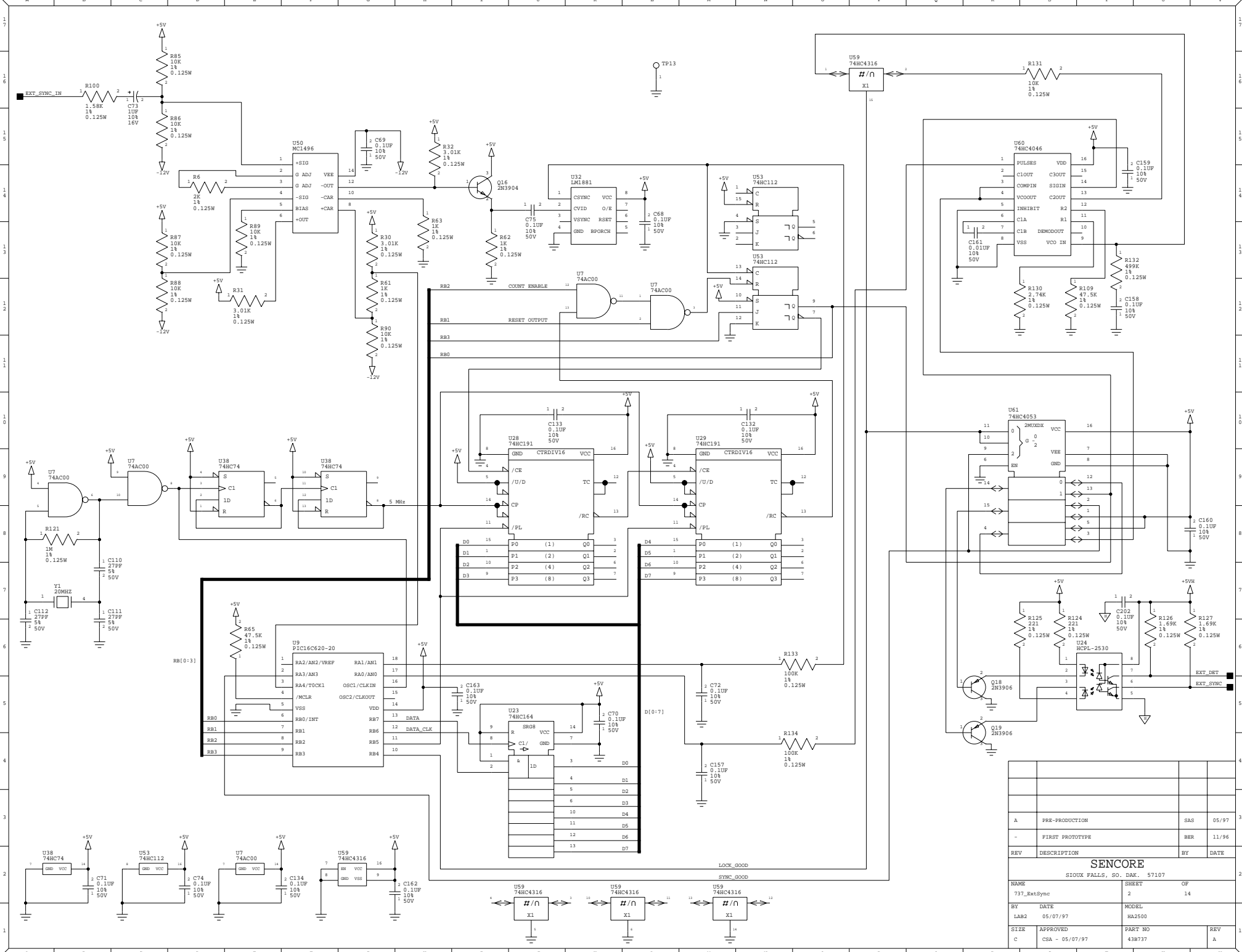


REV	DESCRIPTION	BY	DATE
A	PRE-PRODUCTION	SAS	05/97
-	FIRST PROTOTYPE	SAS	11/96

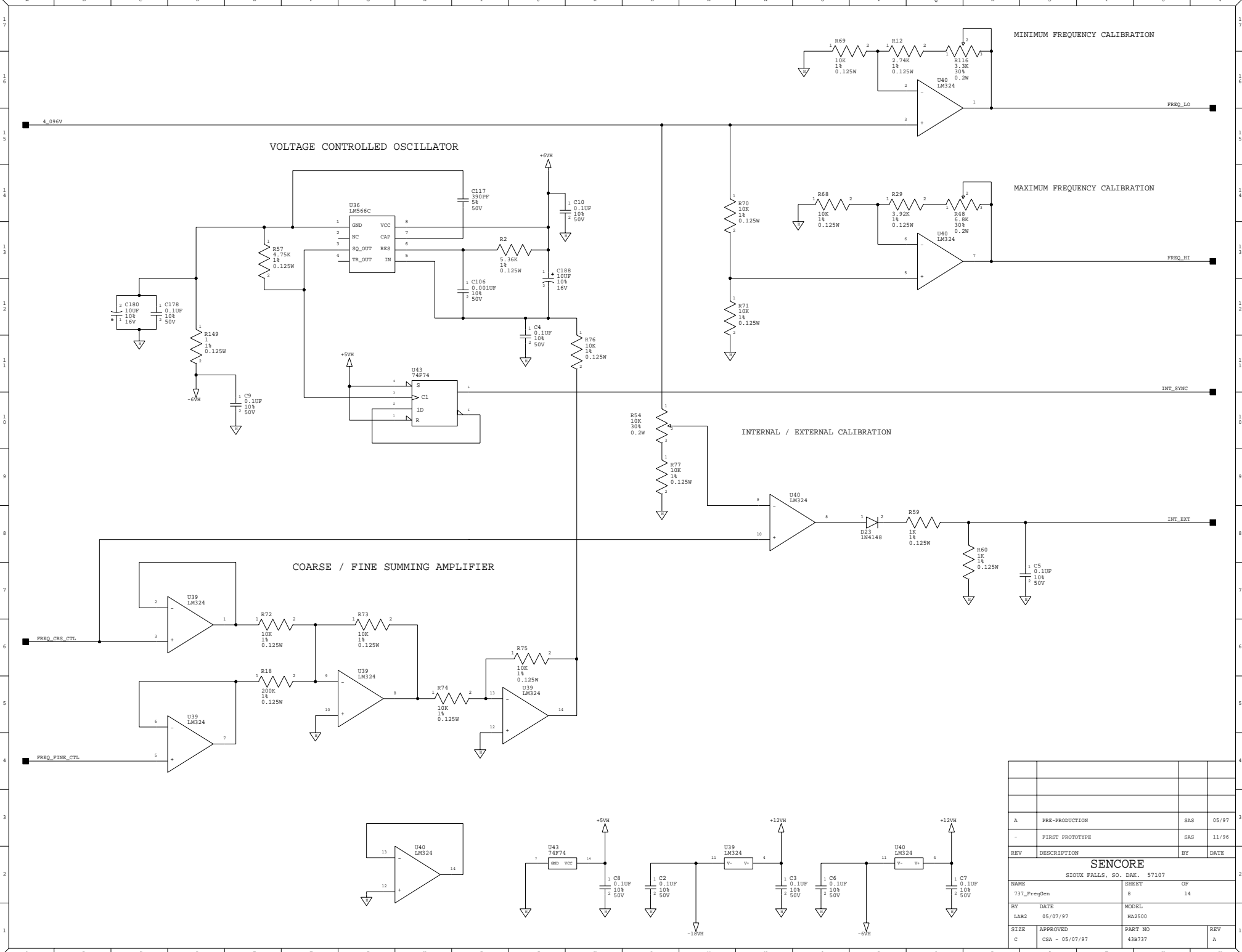
SENCORE	
SIOUX FALLS, SO. DAK. 57107	
NAME	SHEET
737_BaseGateTests	14
LAB2	HA2500
BY	DATE
C	05/07/97
SIZE	APPROVED
C	CSA - 05/07/97
MODEL	PART NO
HA2500	43B737
REV	A



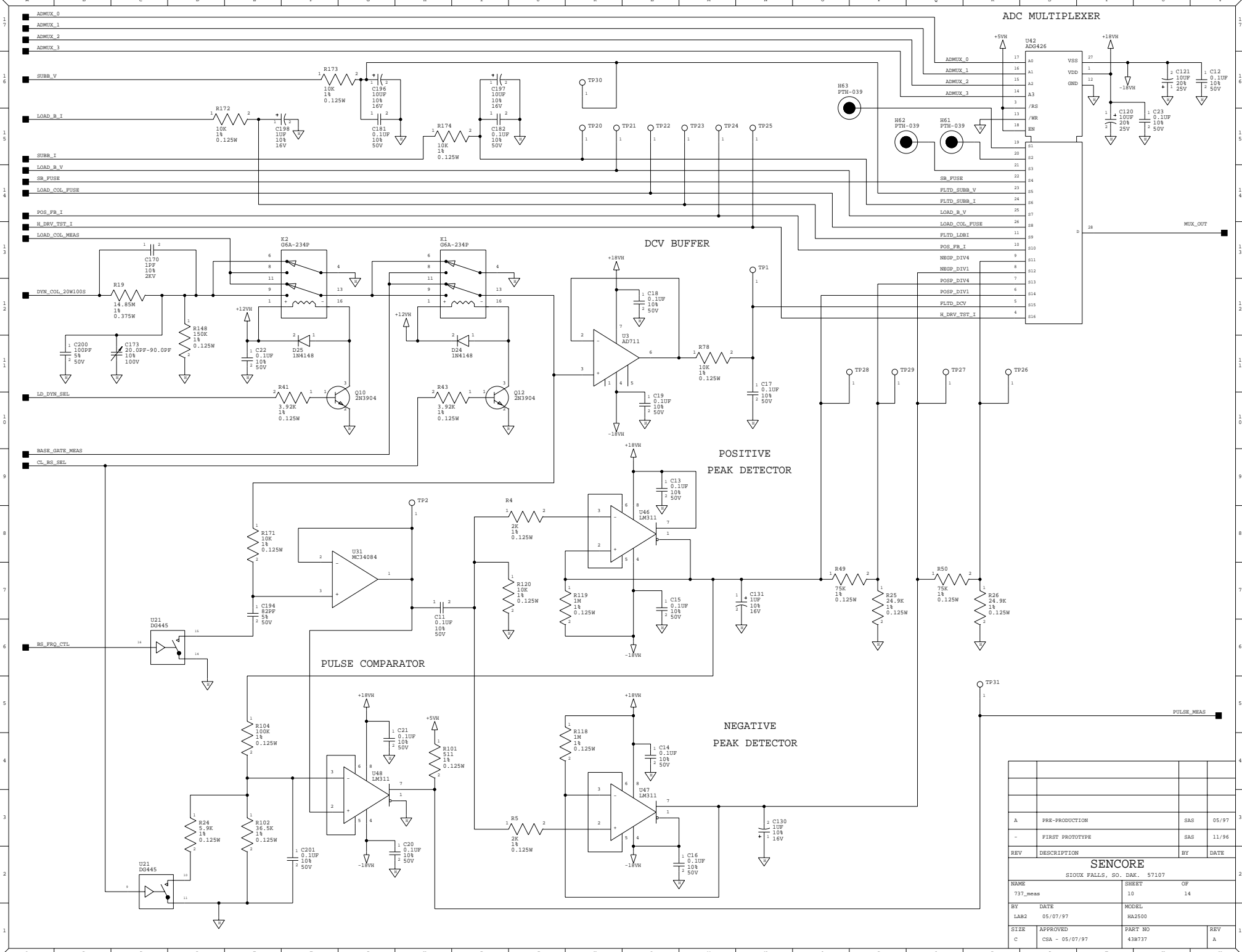
SENSCORE			
SIOUX FALLS, SO. DAK. 57107			
NAME	SHEET	OF	
737_control	12	14	
BY	DATE	MODEL	
LAB2	04/14/97	HA2500	
SIZ2	APPROVED	PART NO	
C	CSA - 05/07/97	438737	
A	DESCRIPTION	BY	DATE
	PRE-PRODUCTION	SAS	04/97
-	FIRST PROTOTYPE	SAS	11/96



SENSCORE			
SIOUX FALLS, SO. DAK. 57107			
NAME	SHEET	OF	
737_ExtSync	2	14	
LAB2	05/07/97	MODEL	HA2500
REV	DESCRIPTION	BY	DATE
-	FIRST PROTOTYPE	BER	11/96
CSA - 05/07/97		PART NO	43B737
		REV	A



A	PRE-PRODUCTION	SAS	05/97	
-	FIRST PROTOTYPE	SAS	11/96	
REV	DESCRIPTION	BY	DATE	
SENCORE				
SIOUX FALLS, SO. DAK. 57107				
NAME 737_FreqGen		SHEET 8 OF 14		
BY	DATE	MODEL		
LAB2	05/07/97	HA2500		
SIZE	APPROVED	PART NO	REV	
C	CSA - 05/07/97	43B737	A	



SENSCORE			
SIOUX FALLS, SO. DAK. 57107			
NAME	737_meas	SHEET	OF
		10	14
BY	LAB2	DATE	05/07/97
		MODEL	HA2500
SIZE	C	APPROVED	CSA - 05/07/97
		PART NO	43B737
		REV	A
A	PRE-PRODUCTION	SAS	05/97
-	FIRST PROTOTYPE	SAS	11/96
REV	DESCRIPTION	BY	DATE

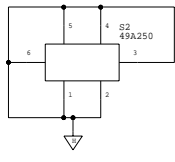
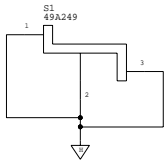
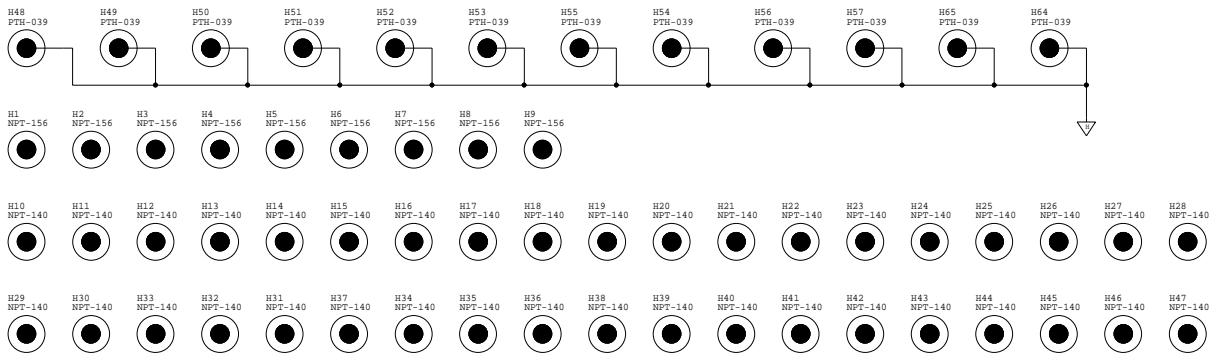
W1
WAVE DIRECTION



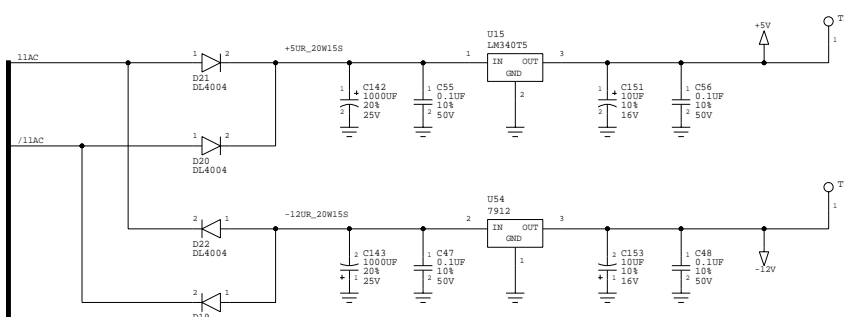
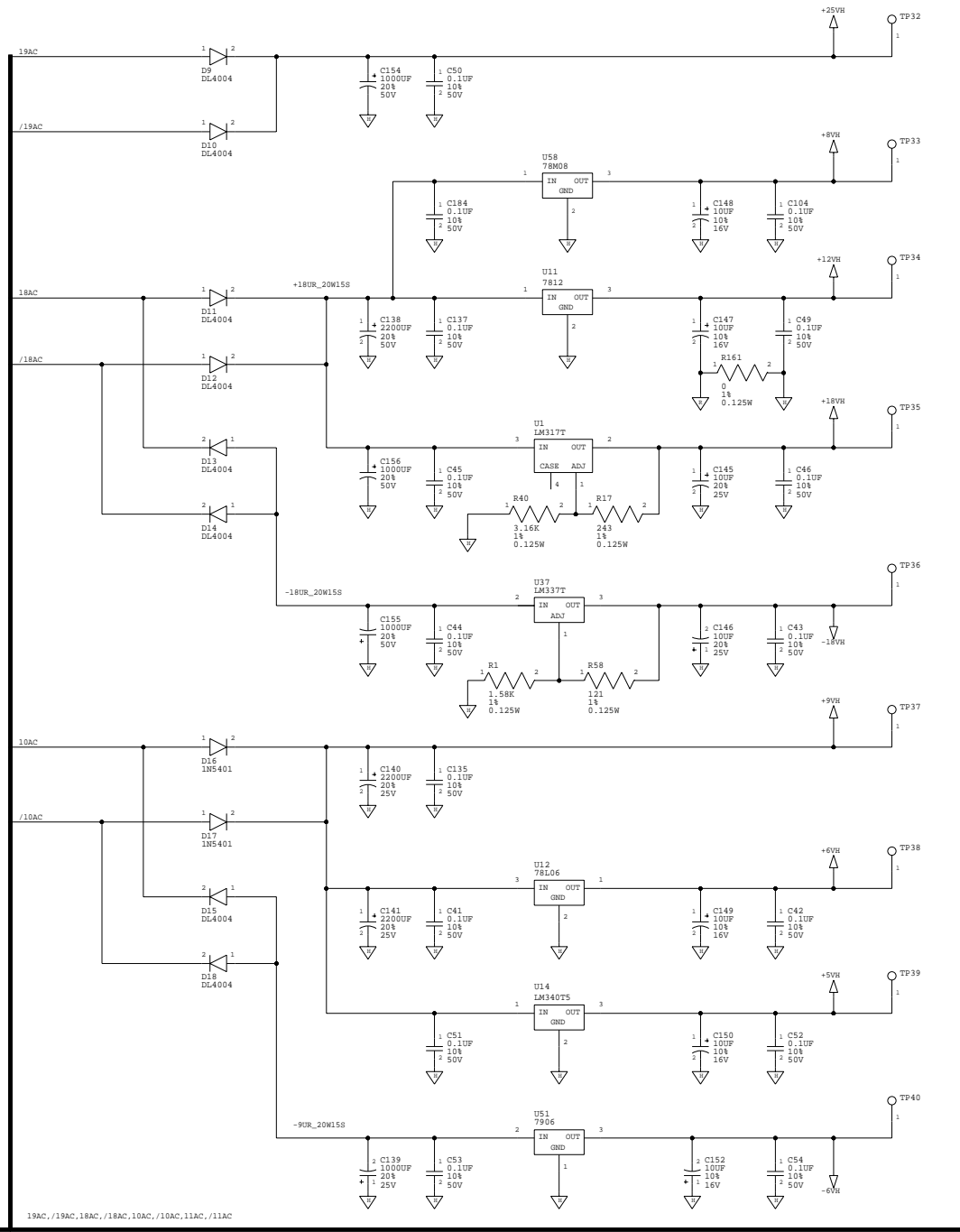
FID1
FIDUCIAL



FID2
FIDUCIAL



A	PRE-PRODUCTION	SAS	04/97
-	FIRST PROTOTYPE	SAS	11/96
REV	DESCRIPTION	BY	DATE
SENCORE			
SIOUX FALLS, SO. DAK. 57107			
NAME 737_mech		SHEET 14 OF 14	
BY	DATE	MODEL	
LAB2	04/24/97	HA2500	
SIZE	APPROVED	PART NO	
C	CSA - 05/07/97	43B737	
		REV	
		A	

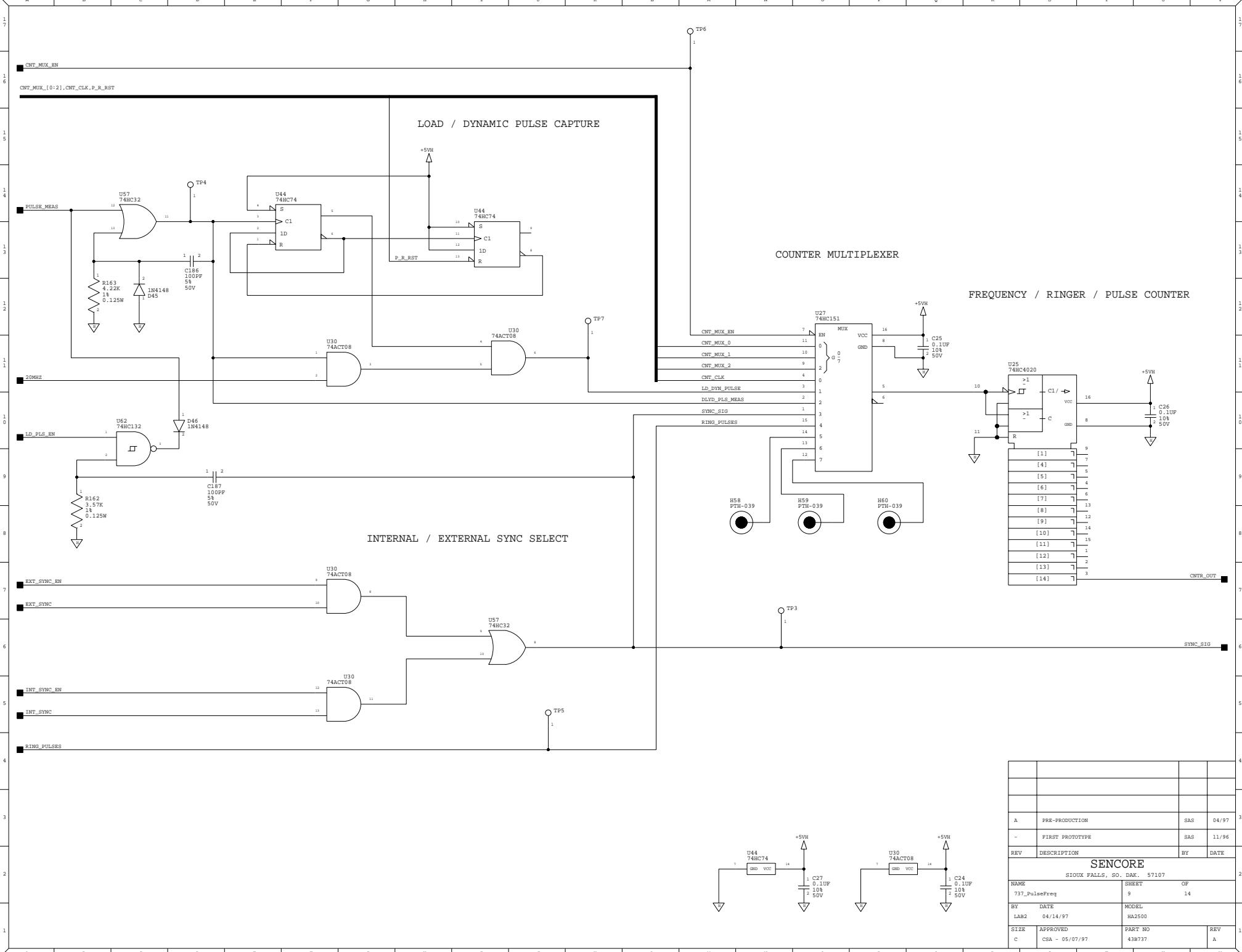


19AC, /19AC, 18AC, /18AC, 10AC, /10AC, 9AC, /9AC, 11AC, /11AC

REV	DESCRIPTION	BY	DATE
A	PRE-PRODUCTION	SAS	04/97
-	FIRST PROTOTYPE	SAS	11/96

SENCORE
SIOUX FALLS, SO. DAK. 57107

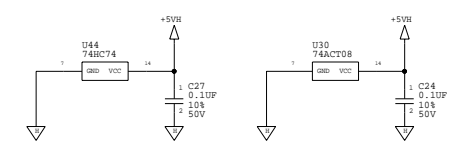
NAME	737_PowerSupplies	SHEET	13	OF	14
BY	DATE	MODEL			
SIZE	APPROVED	PART NO			
C	CSA - 05/07/97	43B737	REV	A	

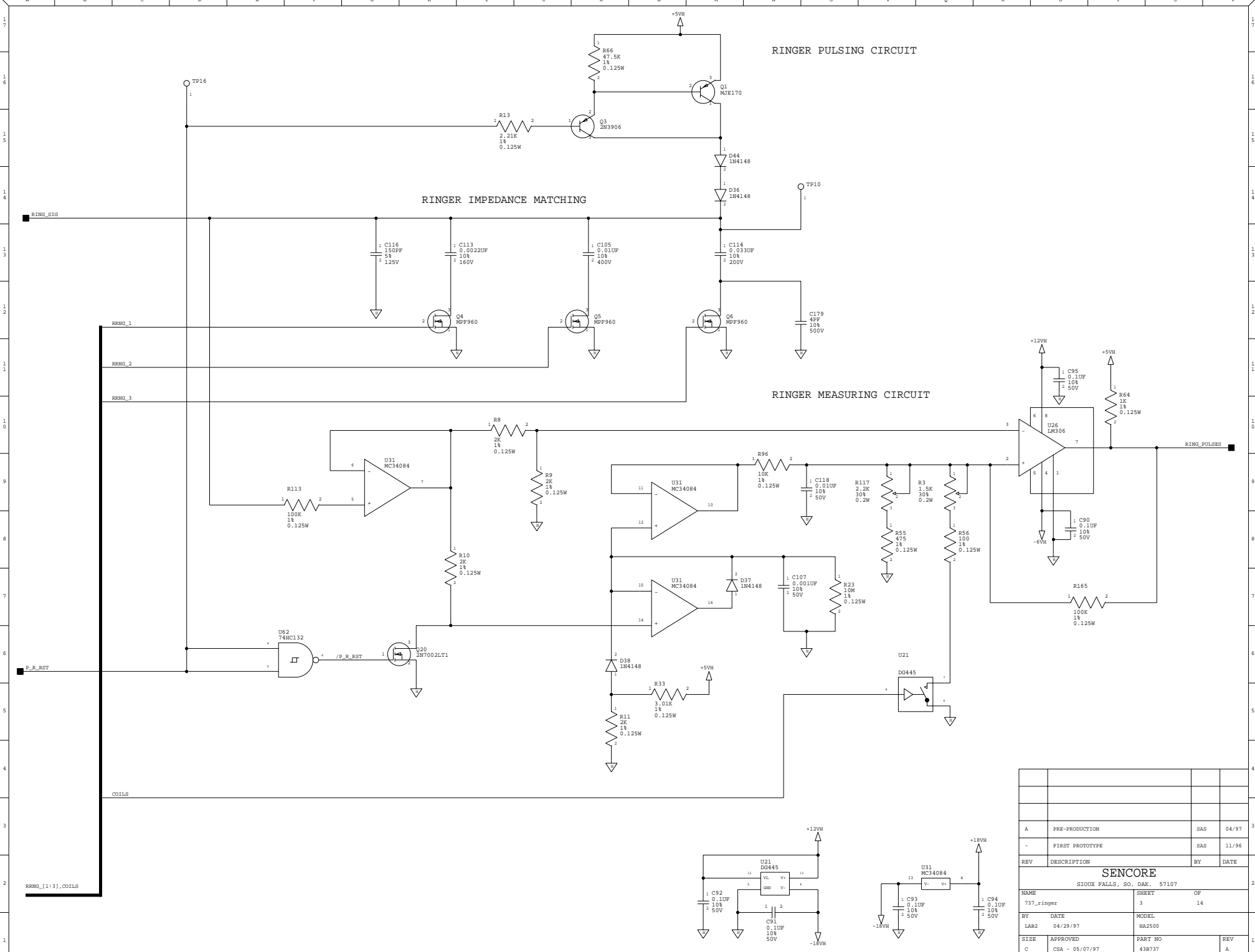


REV	DESCRIPTION	BY	DATE
A	PRE-PRODUCTION	SAS	04/97
-	FIRST PROTOTYPE	SAS	11/96

SCORRE
SIOUX FALLS, SO. DAK. 57107

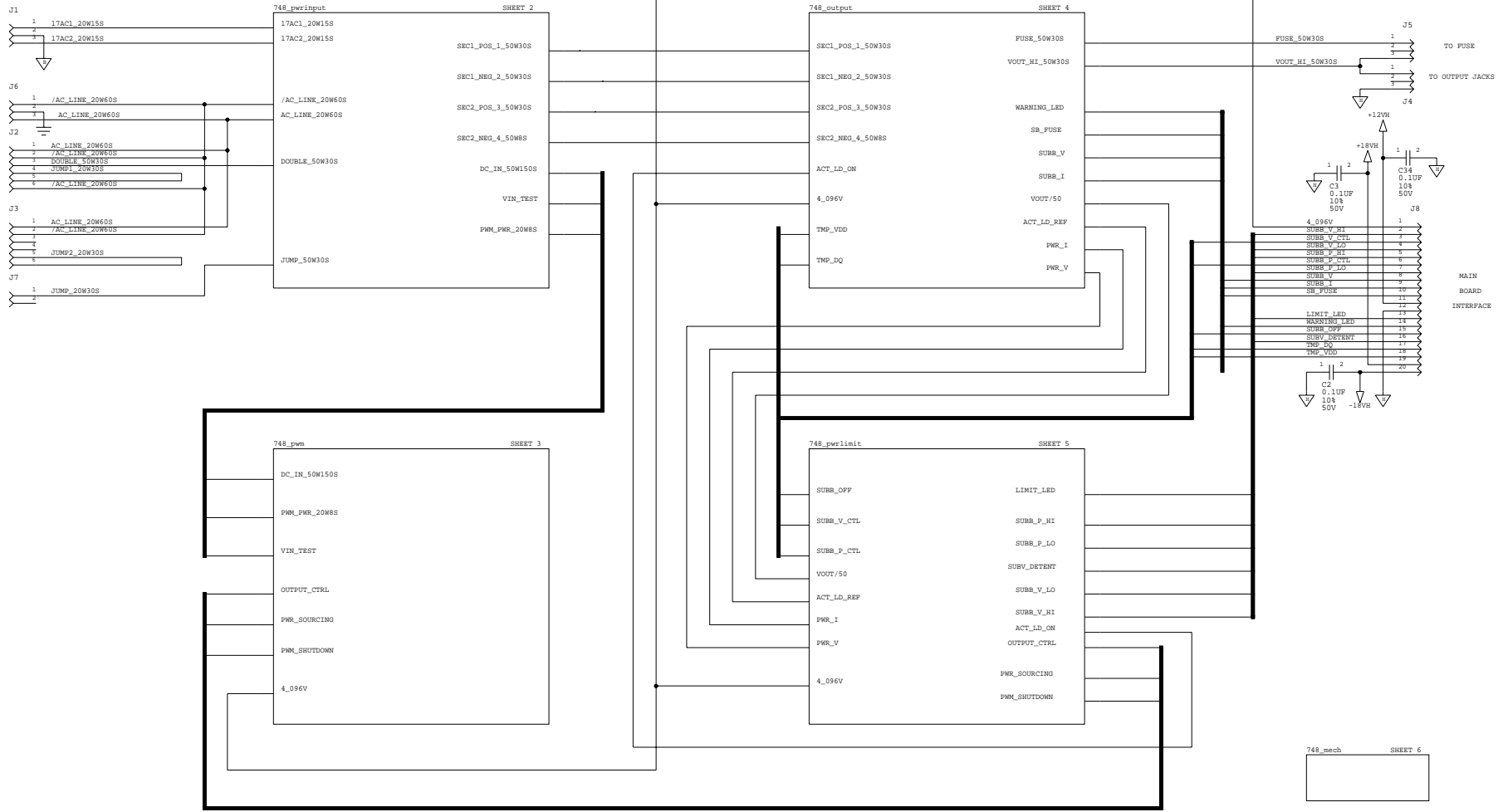
NAME	737_PulseFreq	SHEET	9	OF	14
BY	LAB2	DATE	04/14/97	MODEL	HA2500
SIZE	C	APPROVED	CSA - 05/07/97	PART NO	438737
				REV	A



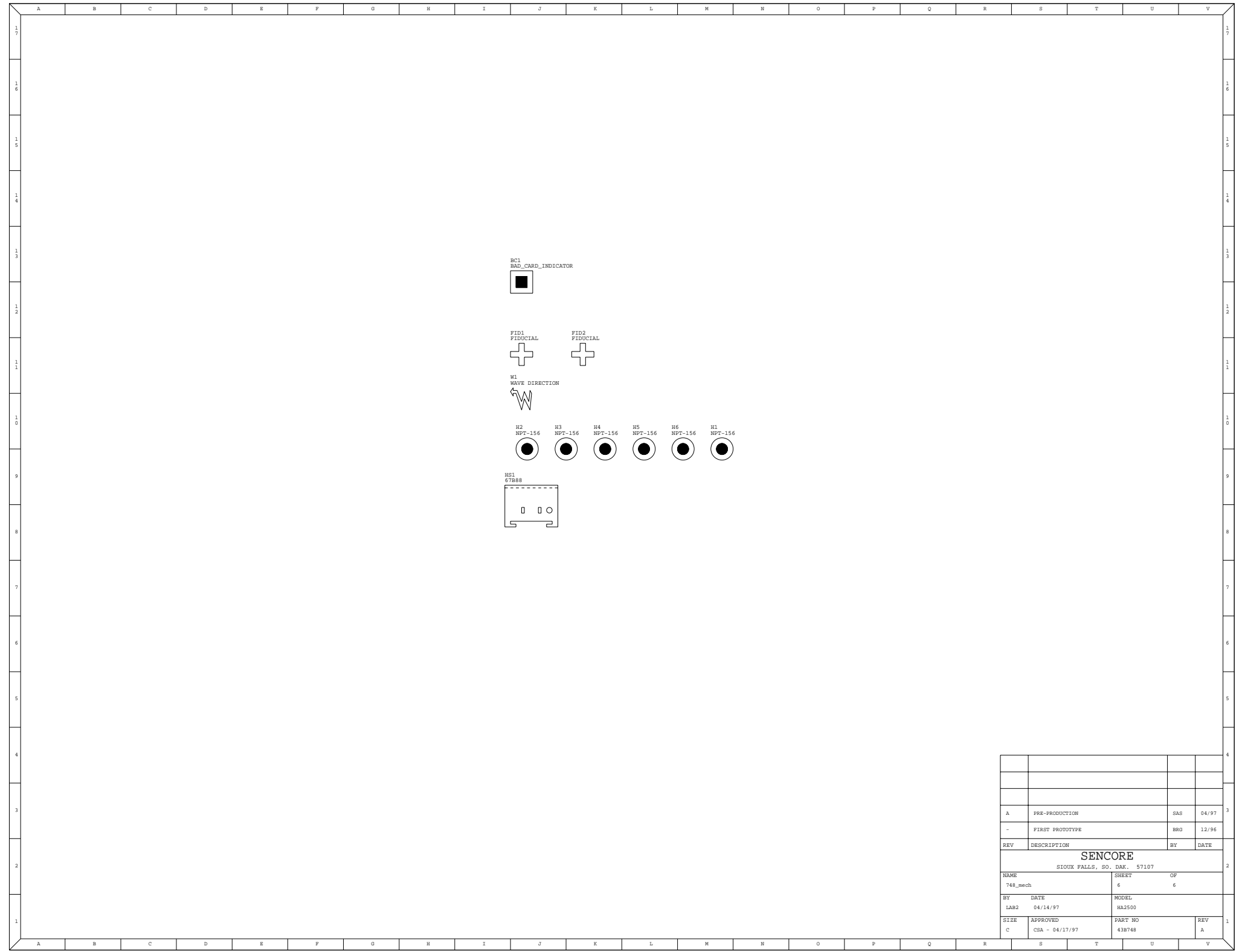


REV	DESCRIPTION	BY	DATE
A	PRE-PRODUCTION	SAS	04/97
-	FIRST PROTOTYPE	SAS	11/96
REV	DESCRIPTION	BY	DATE

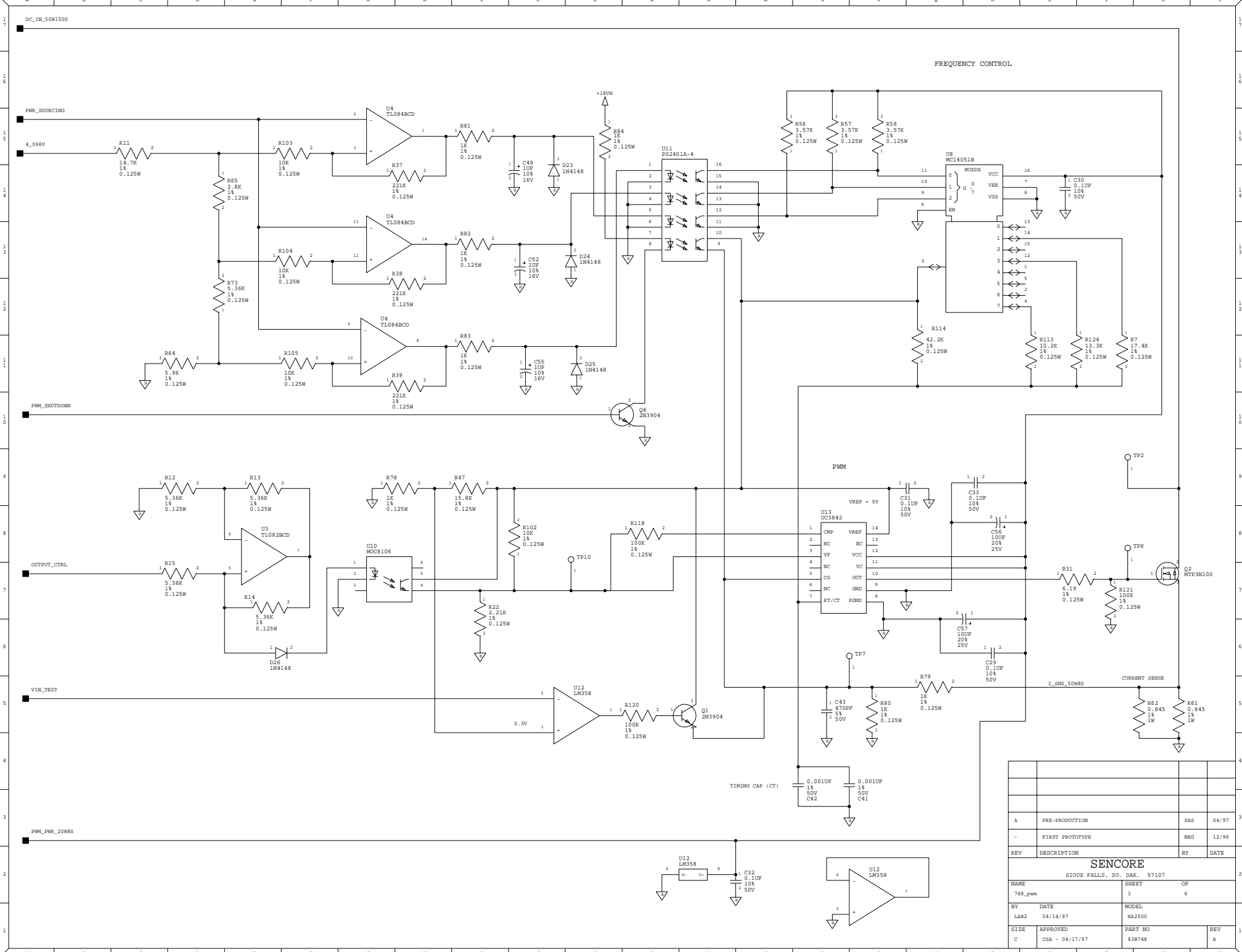
SENCORE			
SIOUX FALLS, SO. DAK. 57107			
NAME	737_ringer	SHEET	OF
LAB2	04/29/97	MODEL	HA2500
SIZE	APPROVED	PART NO	43B737
C	CSA - 05/07/97	REV	A



A	PRE-PRODUCTION	SAS	04/97	
-	FIRST PROTOTYPE	BRG	12/96	
REV	DESCRIPTION	BY	DATE	
SENCORE				
SIOUX FALLS, SO. DAK. 57107				
NAME	43B748	SHEET	1	OF
LAB2	04/14/97	MODEL	HA2500	6
BY	DATE	MODEL	HA2500	
SIZE	APPROVED	PART NO	43B748	REV
C	CSA - 04/17/97			A

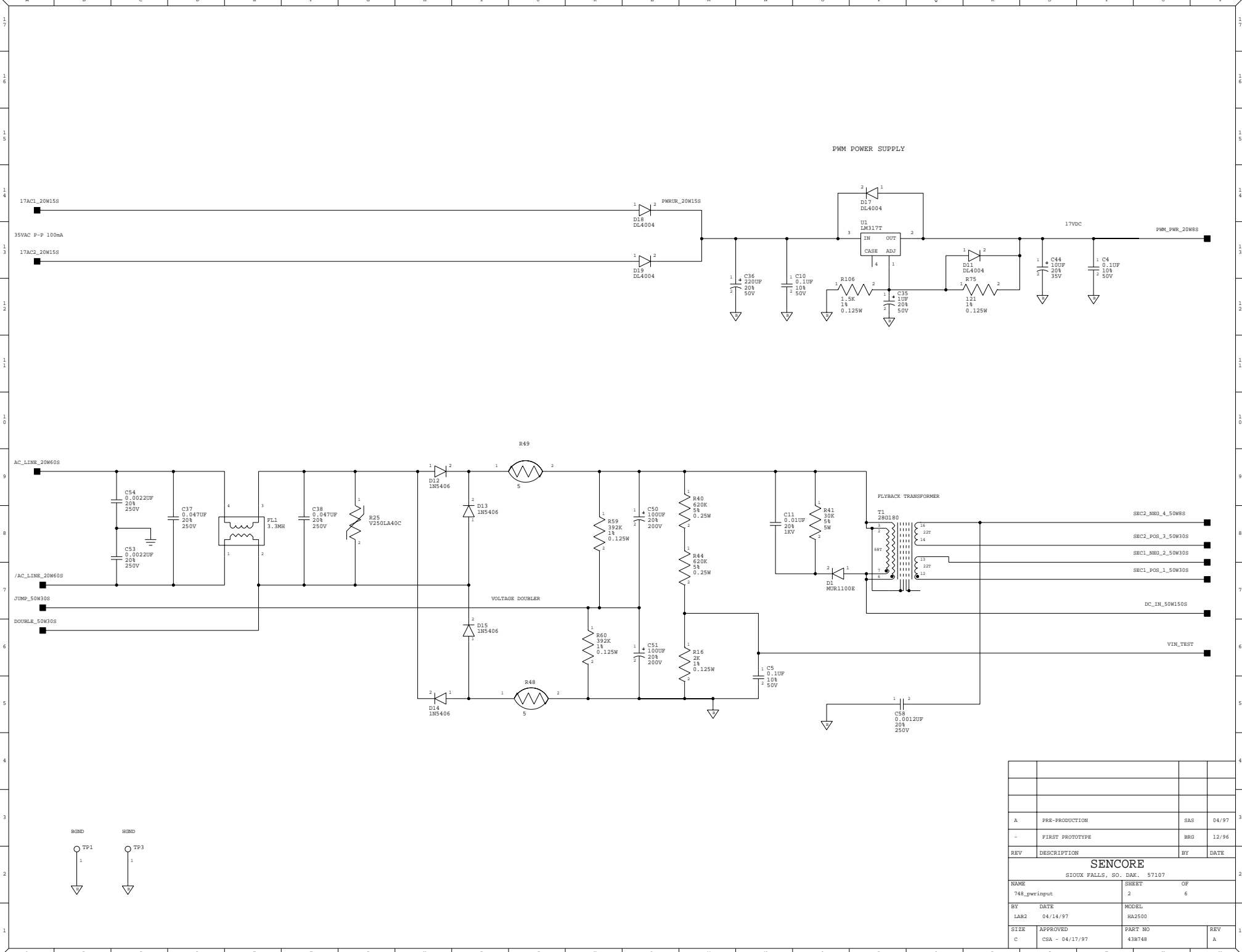


A	PRE-PRODUCTION	SAS	04/97
-	FIRST PROTOTYPE	BRG	12/96
REV	DESCRIPTION	BY	DATE
SENCORE			
SIOUX FALLS, SO. DAK. 57107			
NAME	748_mech	SHEET	OF
		6	6
BY	DATE	MODEL	
LAB2	04/14/97	HA2500	
SIZE	APPROVED	PART NO	REV
C	CSA - 04/17/97	438748	A



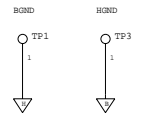
REV	DESCRIPTION	BY	DATE
A	PRE-PRODUCTION	SAS	04/97
-	FIRST PROTOTYPE	BRG	12/96

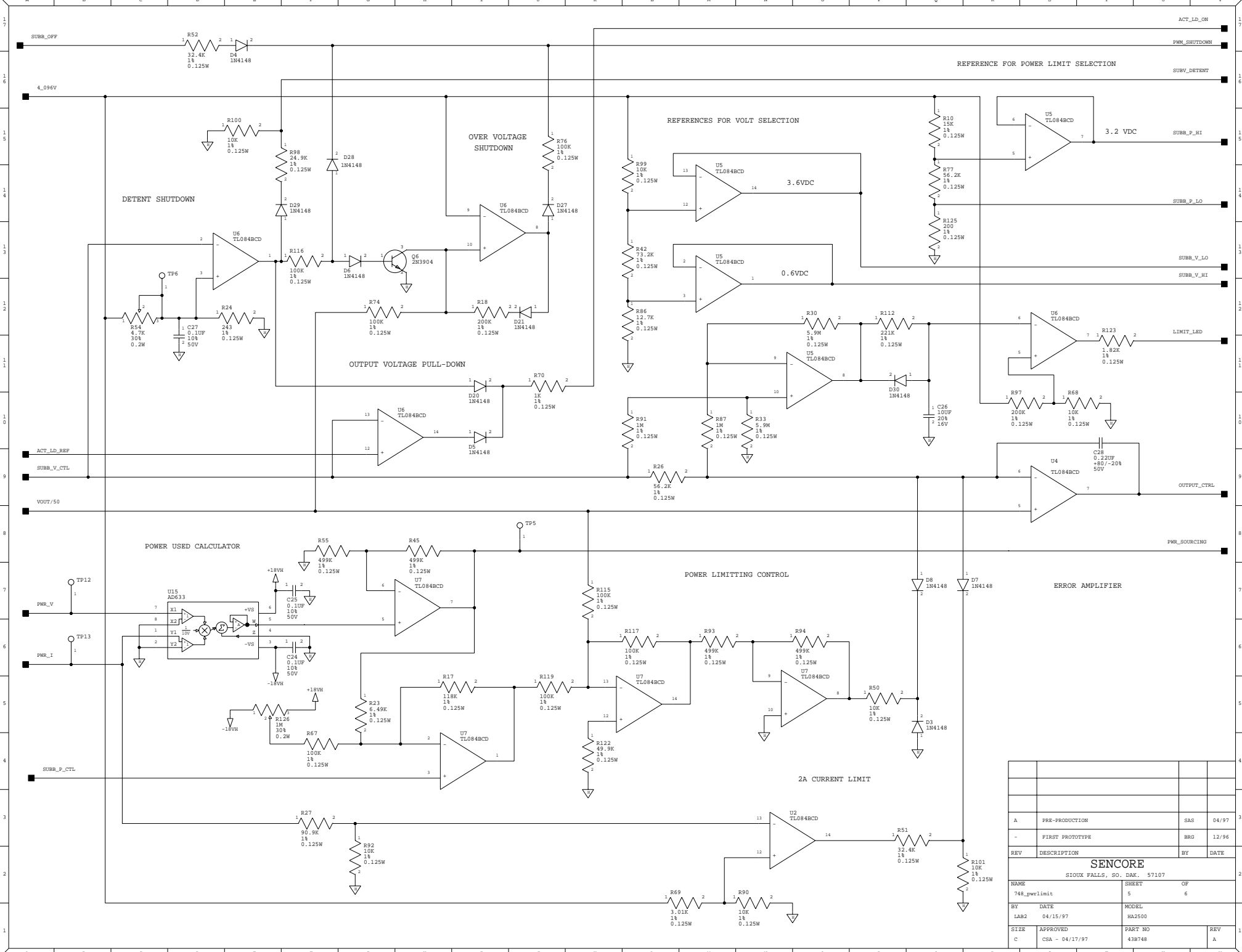
SCORCORE			
SIOUX FALLS, SO. DAK. 57107			
NAME	749_pgm	SHEET	OF
		3	6
BY	DATE	MODEL	
LAB2	04/14/97	HA2500	
SIZE	APPROVED	PART NO	REV
C	CSA - 04/17/97	43B748	A



PMW POWER SUPPLY

A	PRE-PRODUCTION	SAS	04/97
-	FIRST PROTOTYPE	BRG	12/96
REV	DESCRIPTION	BY	DATE
SENCORE			
SIOUX FALLS, SO. DAK. 57107			
NAME	748_pwrinput	SHEET	OF
LAB2	04/14/97	2	6
BY	DATE	MODEL	HA2500
SIZE	APPROVED	PART NO	438748
C	CSA - 04/17/97	REV	A





REV	DESCRIPTION	BY	DATE
A	PRE-PRODUCTION	SAS	04/97
-	FIRST PROTOTYPE	BRG	12/96
REV	DESCRIPTION	BY	DATE

SENCORE
SIOUX FALLS, SO. DAK. 57107

NAME	748_pwrLimit	SHEET	OF	6	
BY	LAB2	DATE	04/15/97	MODEL	HA2500
SIZE	APPROVED	C	CSA - 04/17/97	PART NO	43B748
				REV	A