

ERRATA

Please make the following changes in your 1200A Manual.

Page 1-3 Par. 1-17. Delete the sentence "Use the bare wire cable terminations on the rear panel of the 1200A and the banana plug cable termination on the front panel of the 1700."

Page 1-6 Par. 1-43, e (2). Change "1-43c" to "1-43b".

Page 1-8 Par. 1-45, d (4). Change "LOW PASS" to "BAND PASS".

Page 2-4 Par. 2-7, c. Change "located on the Test Signal PC board (A-3) see Figure 4-4" to "located on the Measurement PC board (A-2) see Figure 4-3".

Page 2-5 Par. 2-7, d. Same as above.

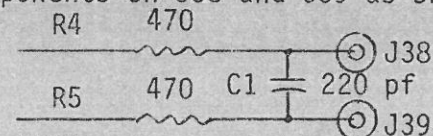
Page 2-6 Par. 2-7, e. Change "1220A Circuit common is always connected to..." to "1200A Circuit common is always connected to...".

Change "... against currents exceeding 1A..." to "... against currents exceeding 1/8A...".

Figure 2-5. In two places, change "1A" to "1/8A".

NOTE: Front panels are incorrectly marked "1A" on serial numbers below 1XX-00300.

Page 4-3 Add RF filter components on J38 and J39 as shown -



Connect J401-3 to J205-1 instead of to J303-1. Change the color code from "BLK" to "BRN".

Connect J401-4 to J303-1 instead of to J205-1.

Page 4-7 Change U201, 202, and 203 from "2605" to "741". Delete the following capacitors - C250, 253, 256, 259, 262 and 265. Change C267 from "10pf" to "33pf".

Page 4-9 Change R303 from "15.8K" to "1.5K".  
Change R3 from "10K" to "1K".  
Delete circuit-common from J301-2. Add 5.1 resistor from J301-2 to circuit common.

Connect S-15A, pin 1 to S-15A, pin 2 and to S-10A, pin 9.

Connect S-15B, pin 1 to S-15B, pin 2 and to S-10A, pin 4.

Page 4-11

